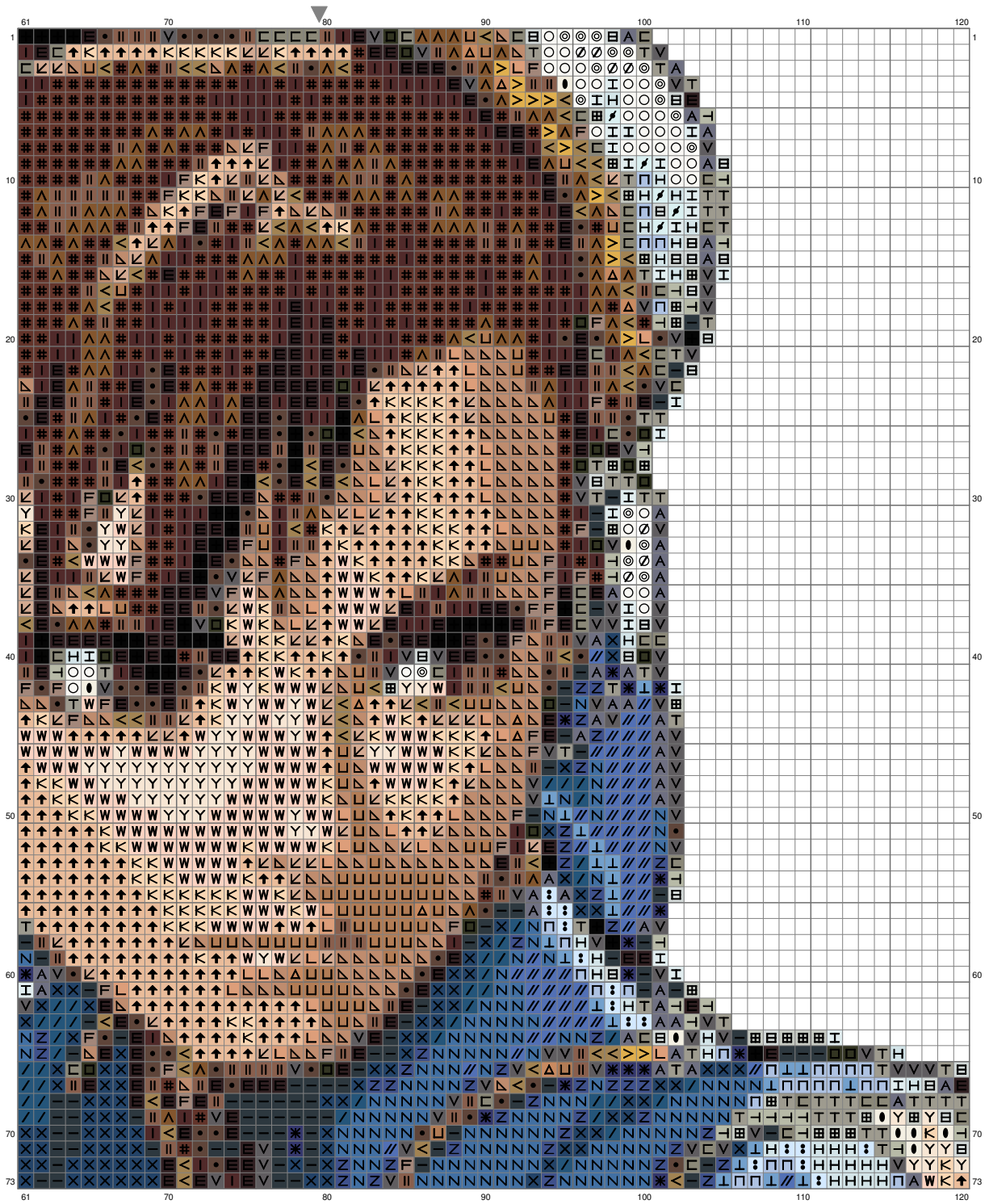


Chun-Li

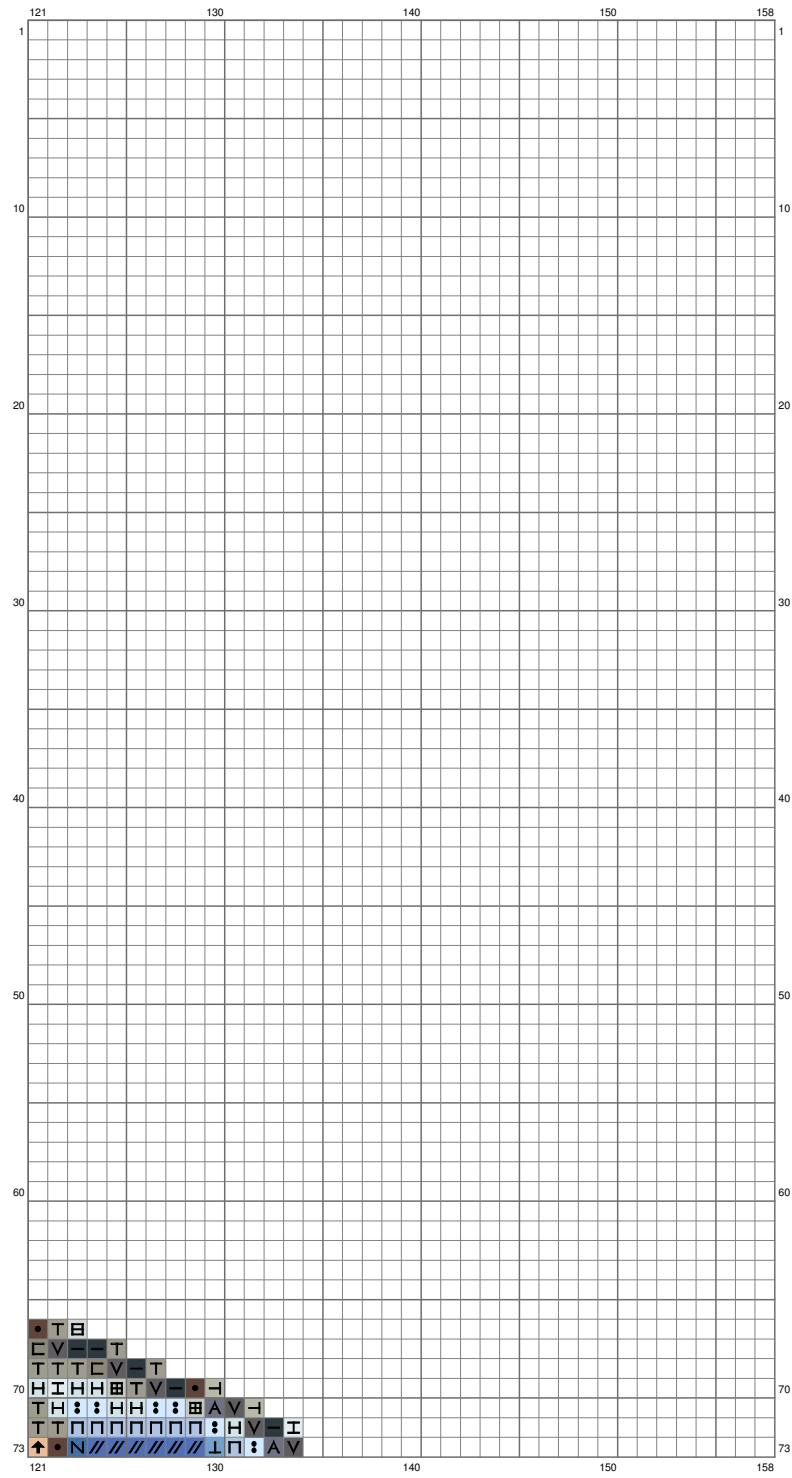


Chun-Li



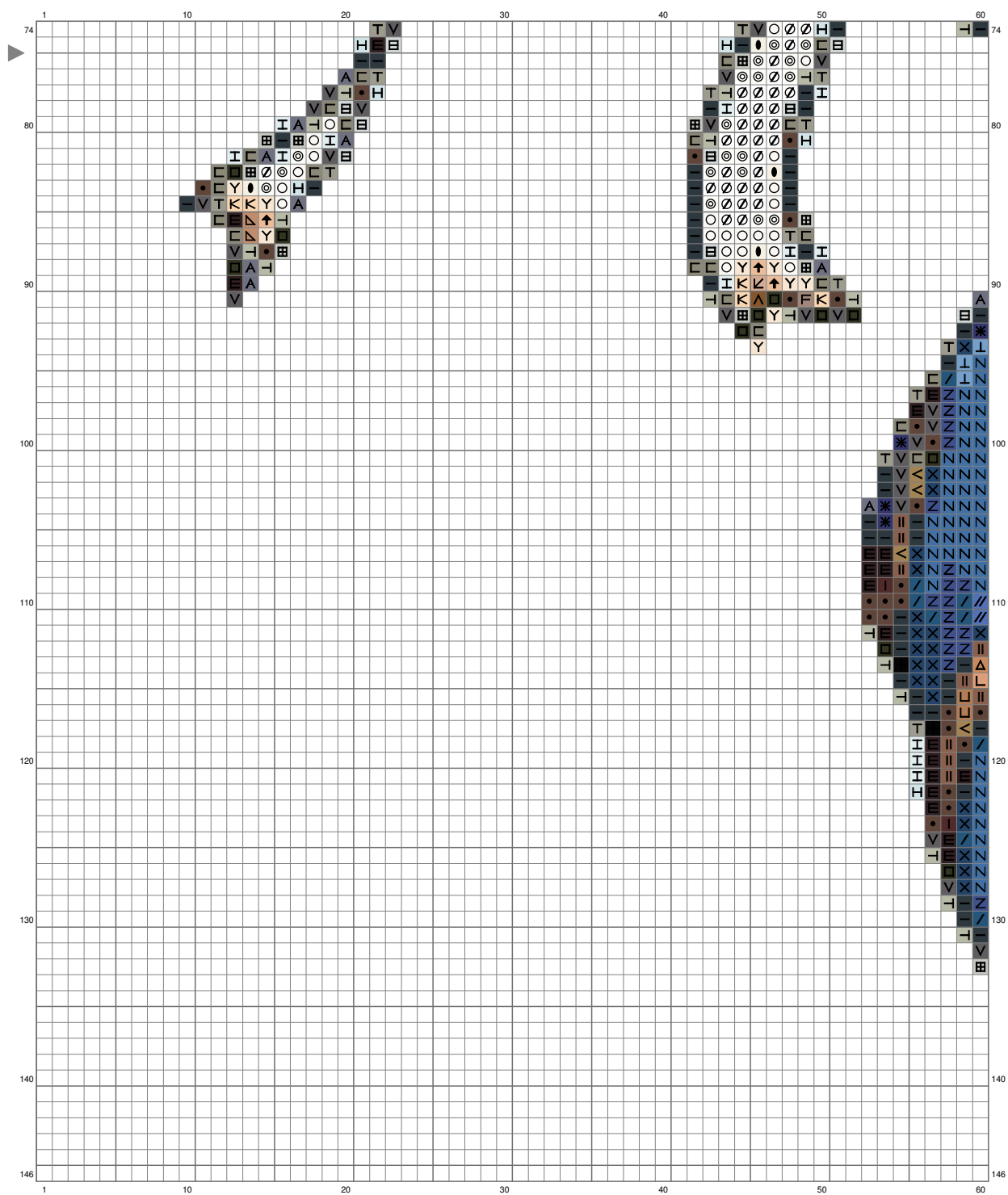
(This chart is printed using KG-Chart LE for Cross Stitch.)

Chun-Li



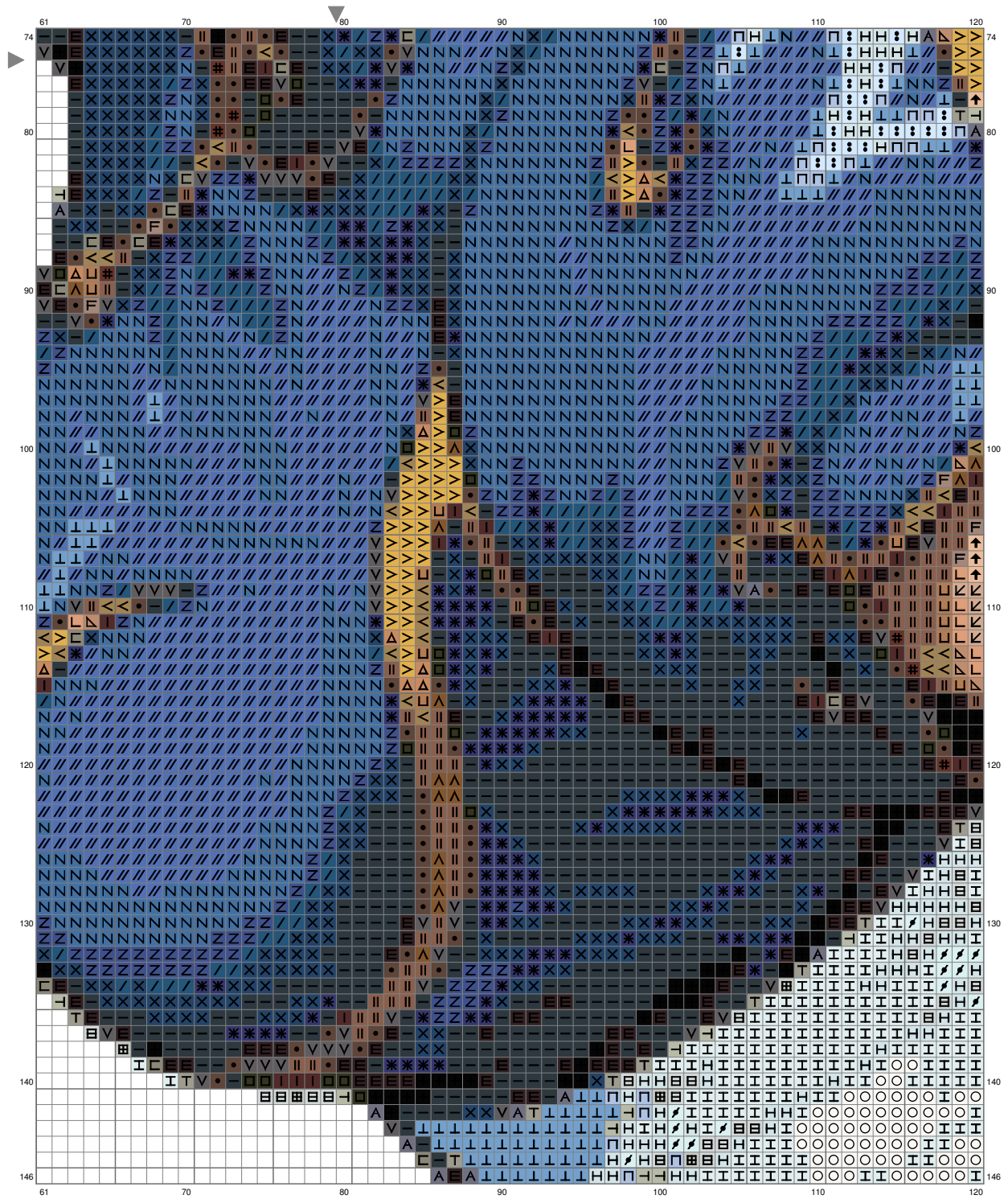
(This chart is printed using KG-Chart LE for Cross Stitch.)

Chun-Li



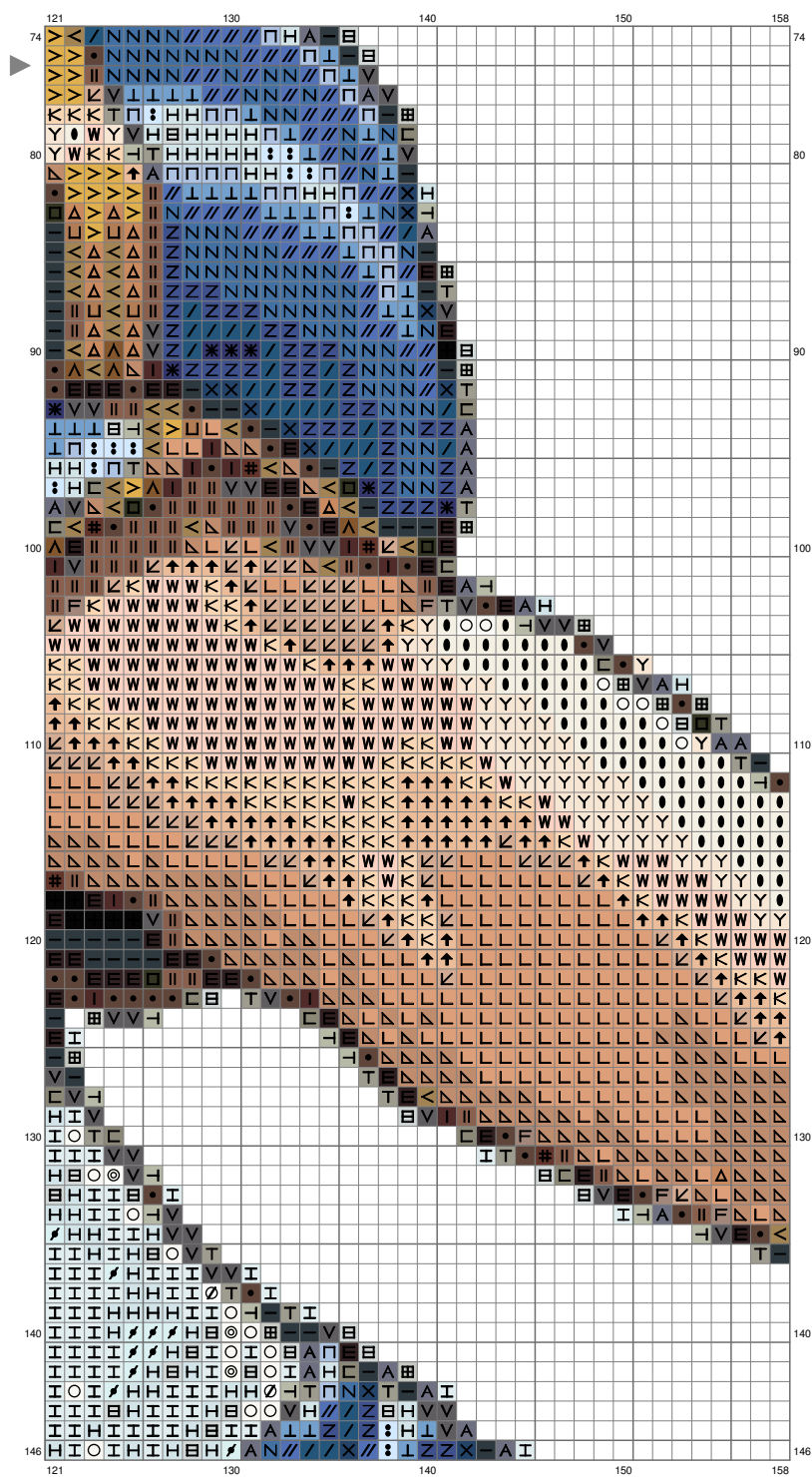
(This chart is printed using KG-Chart LE for Cross Stitch.)

Chun-Li



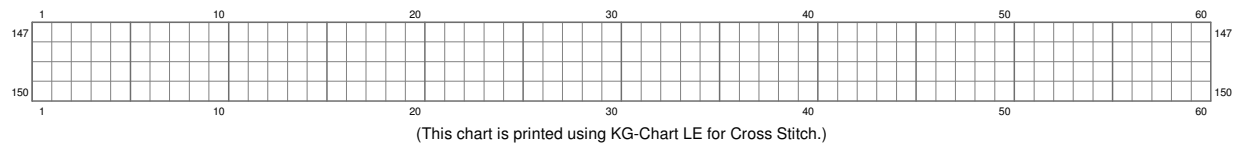
(This chart is printed using KG-Chart LE for Cross Stitch.)

Chun-Li

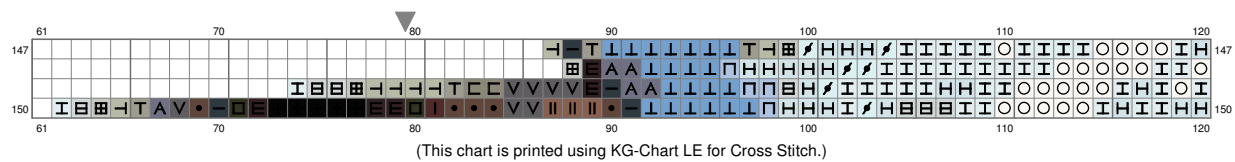


(This chart is printed using KG-Chart LE for Cross Stitch.)

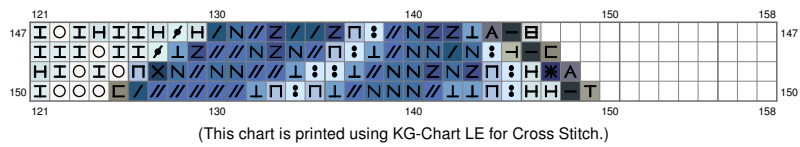
Chun-Li



Chun-Li



Chun-Li



Chun-Li

Stitch Count: 158w x 150h



































Finished Size: 44.59 cm x 42.33 cm (18 ct./inch)

Cloth: Linen

Cloth's Color: White

of colors: 44 Colors

Color Table (DMC)

Cross Stitch					
	310	(126 ct)		334	(189 ct)
	939	(458 ct)		523	(148 ct)
	934	(85 ct)		3325	(108 ct)
	500	(930 ct)		435	(44 ct)
	3750	(519 ct)		3820	(89 ct)
	311	(218 ct)		3863	(358 ct)
	3371	(280 ct)		436	(276 ct)
	938	(539 ct)		3864	(175 ct)
	3031	(303 ct)		437	(399 ct)
	535	(341 ct)		3023	(128 ct)
	869	(193 ct)		928	(195 ct)
	610	(334 ct)		3753	(257 ct)
	831	(159 ct)		3756	(455 ct)
	420	(106 ct)		738	(222 ct)
	3842	(268 ct)		945	(306 ct)
	824	(347 ct)		739	(135 ct)
	517	(1156 ct)		ECRU	(96 ct)
	825	(787 ct)		162	(64 ct)
	317	(188 ct)		3841	(51 ct)
	640	(146 ct)		3865	(418 ct)
	611	(61 ct)		BLANC	(108 ct)
	646	(193 ct)		B5200	(101 ct)