

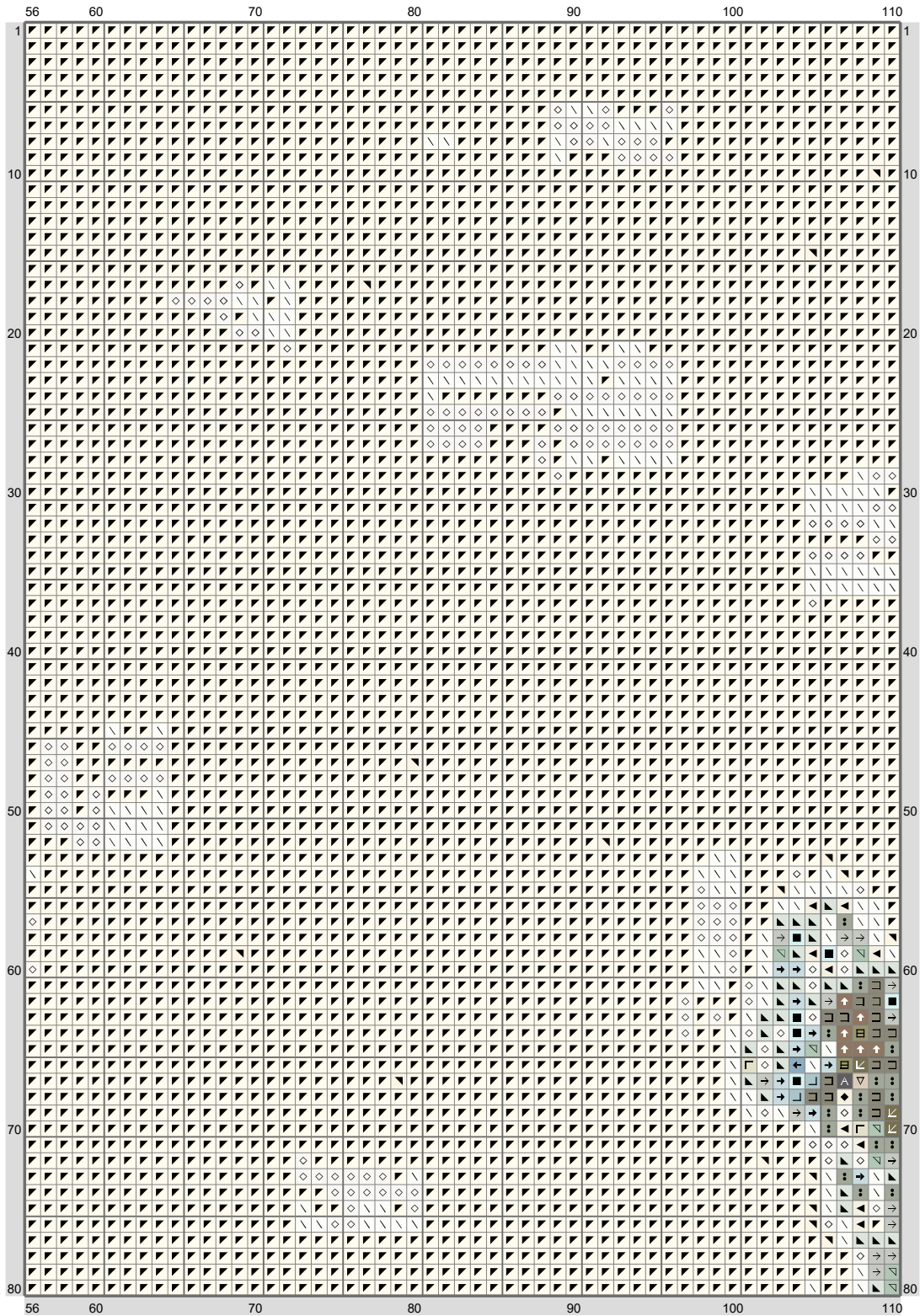
## Aserresa1111 Request



(This chart is printed using KG-Chart LE for Cross Stitch.)

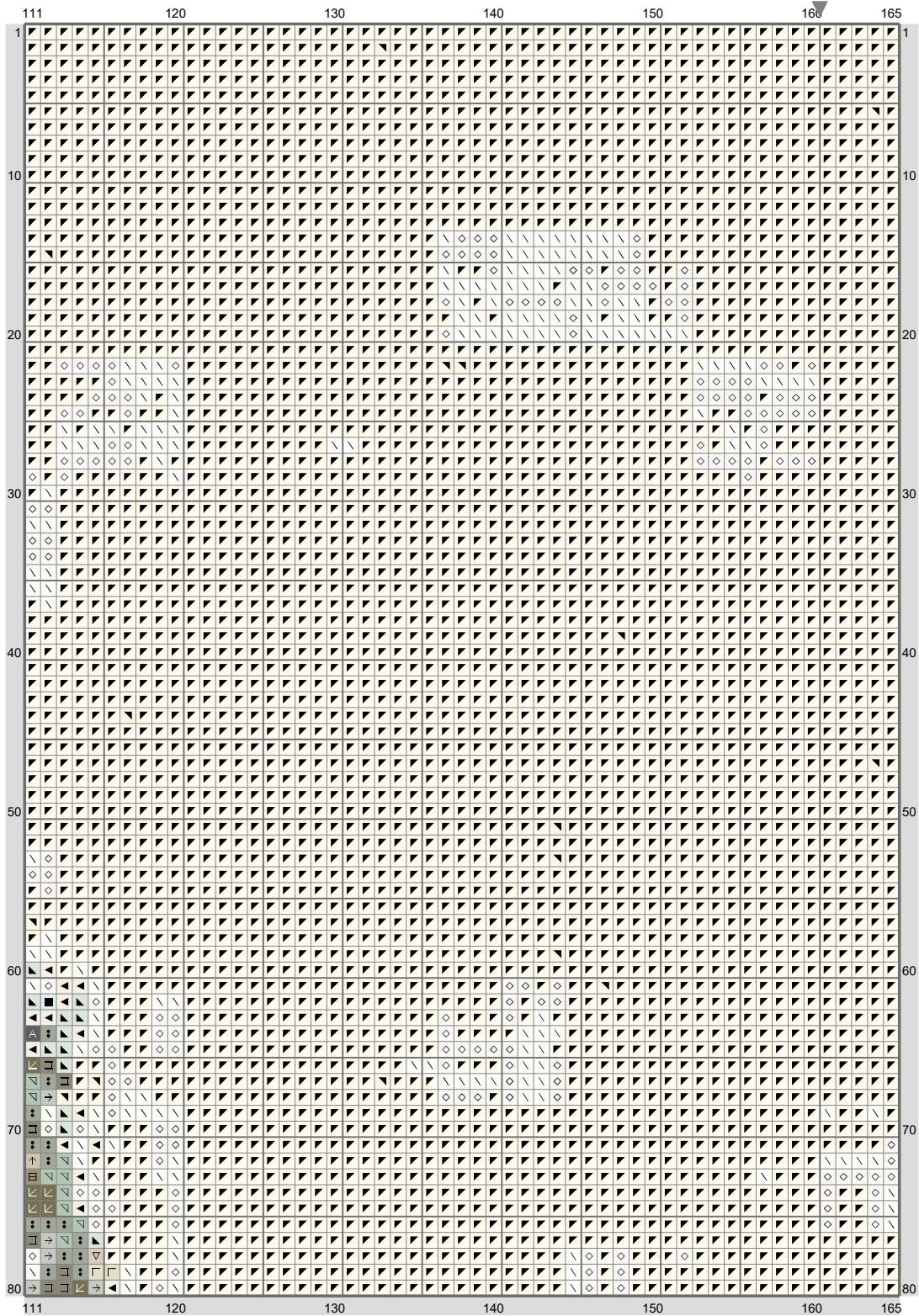


# Aserresa1111 Request



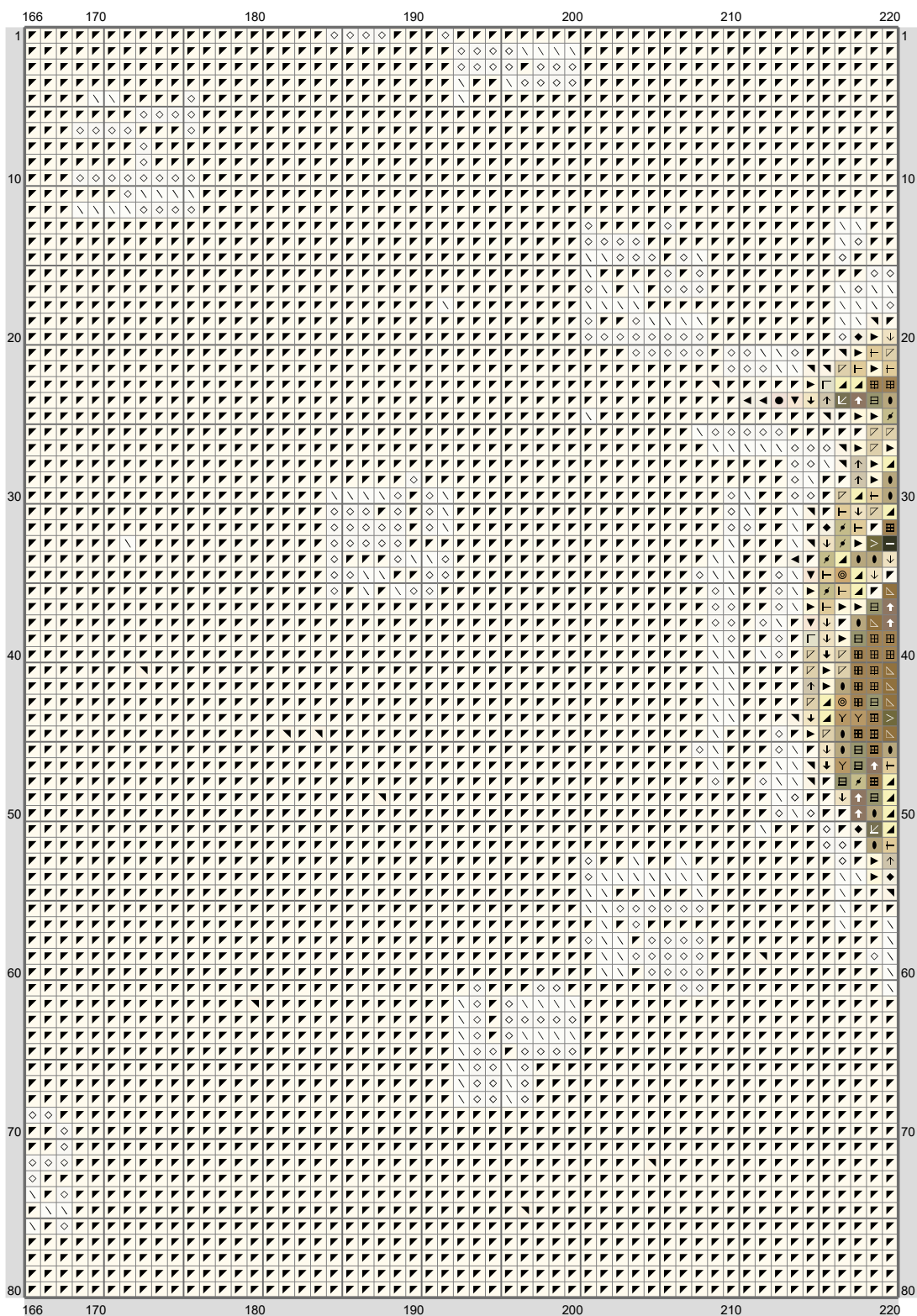
(This chart is printed using KG-Chart LE for Cross Stitch.)

# Aserresa1111 Request



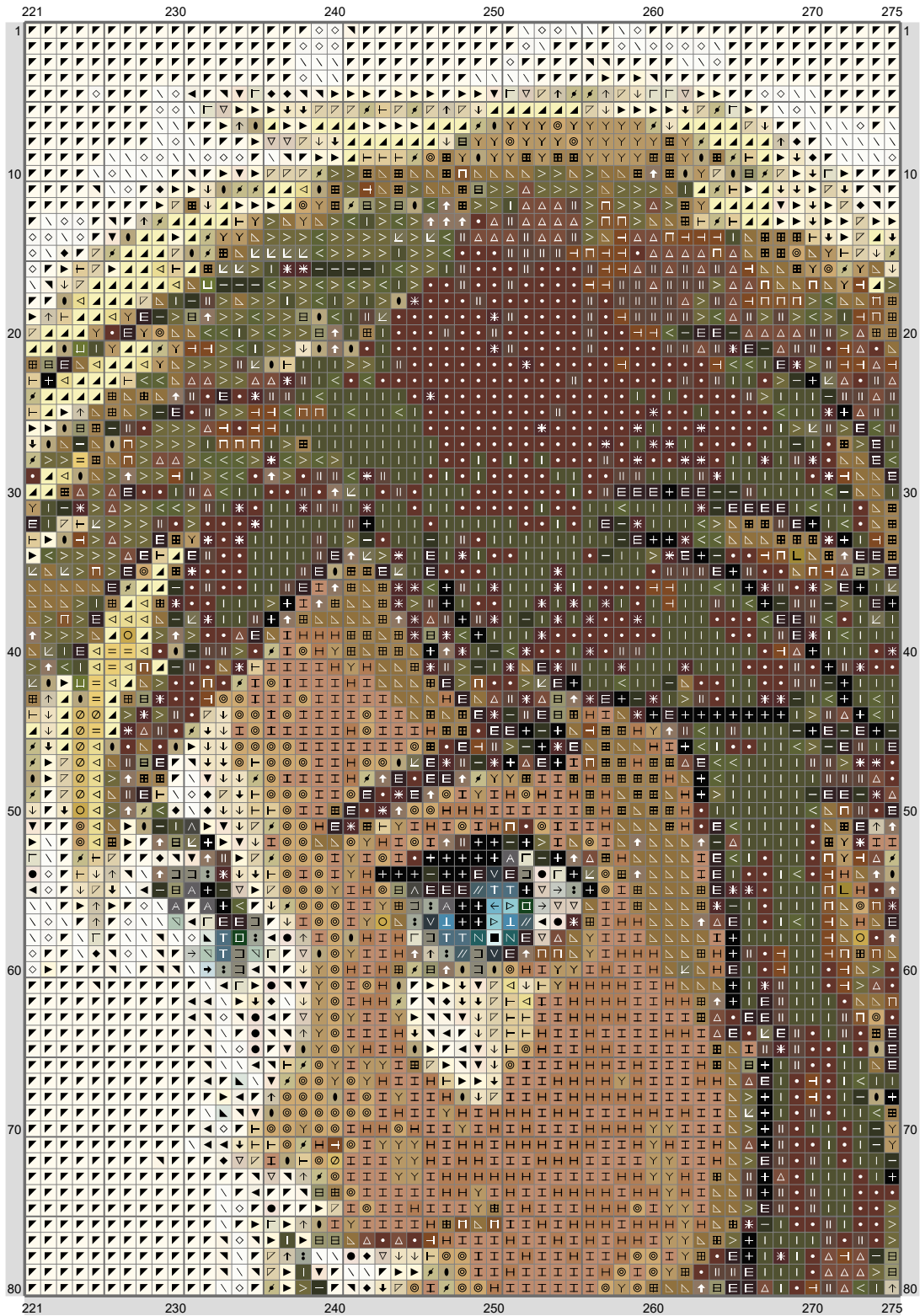
(This chart is printed using KG-Chart LE for Cross Stitch.)

# Aserresa1111 Request

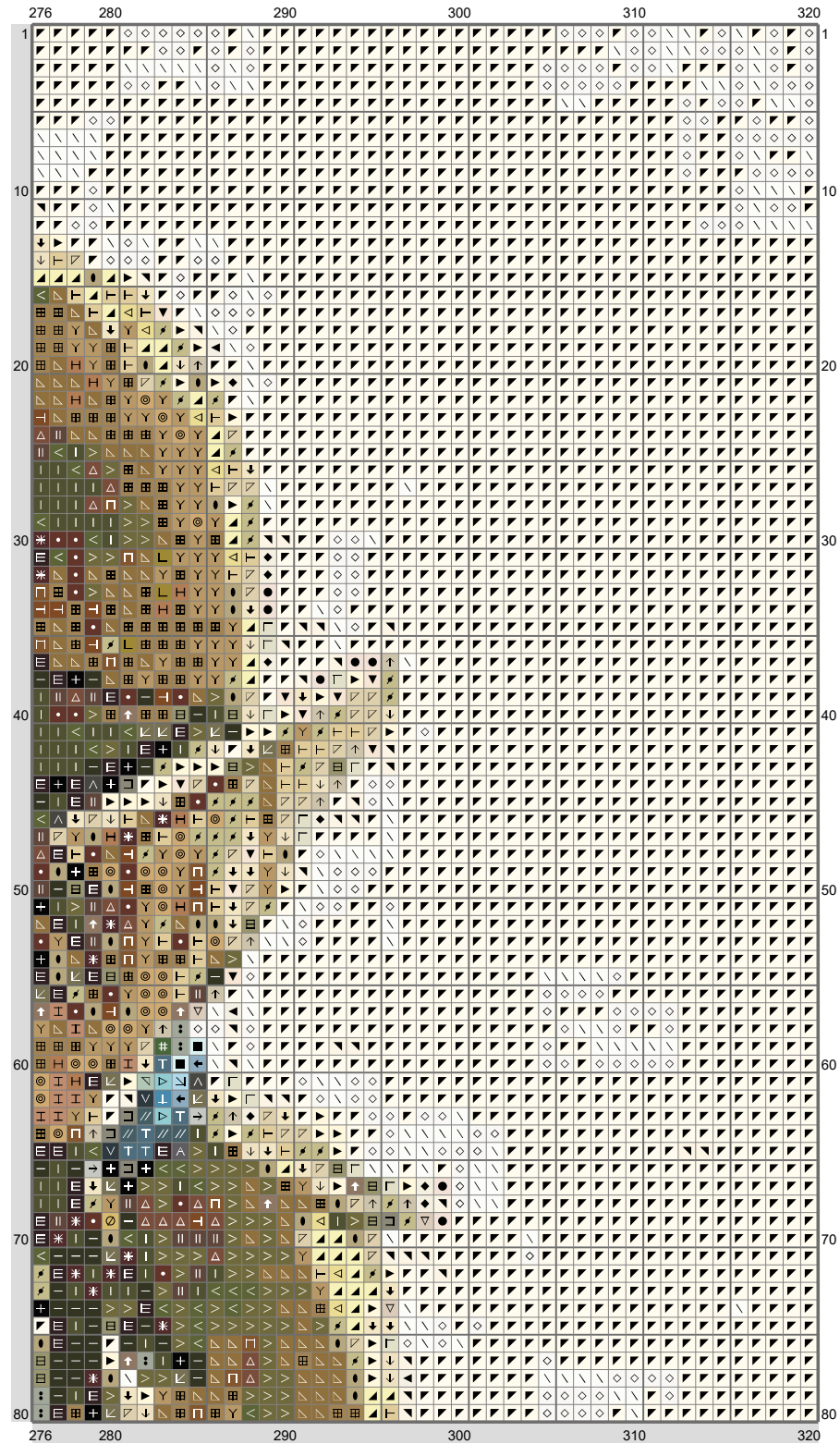


(This chart is printed using KG-Chart LE for Cross Stitch.)

# Aserresa1111 Request

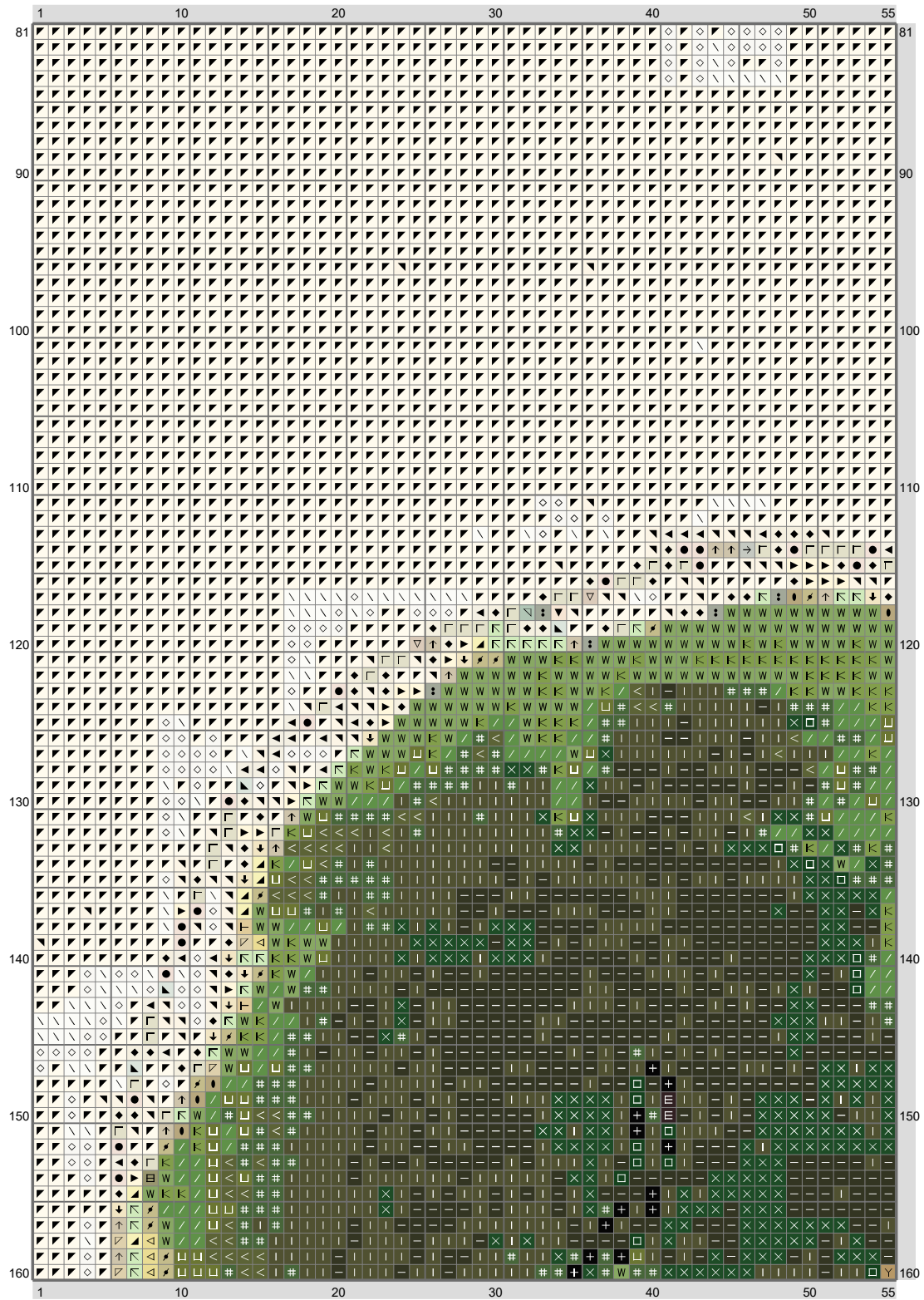


# Aserresa1111 Request



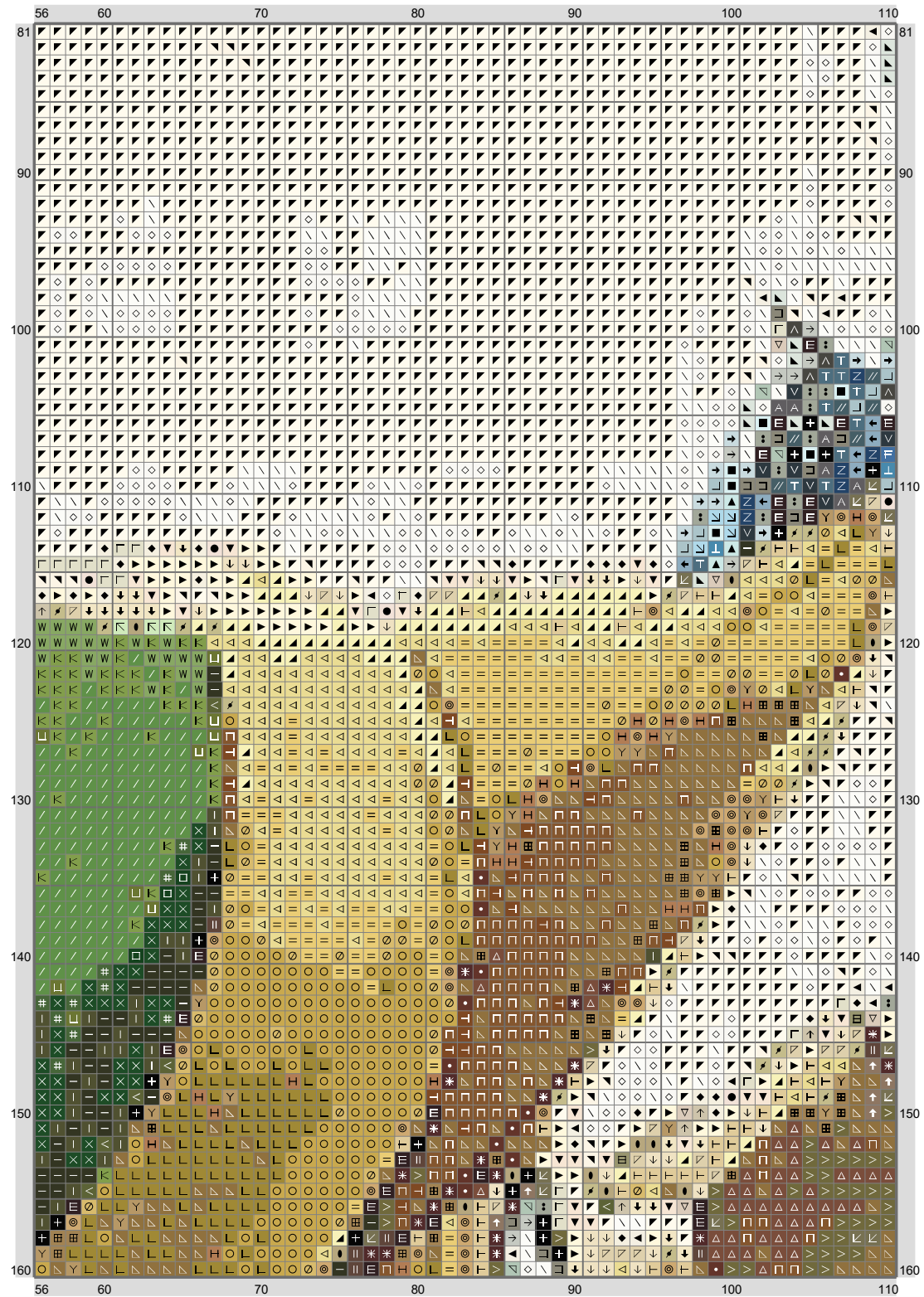


# Aserresa1111 Request



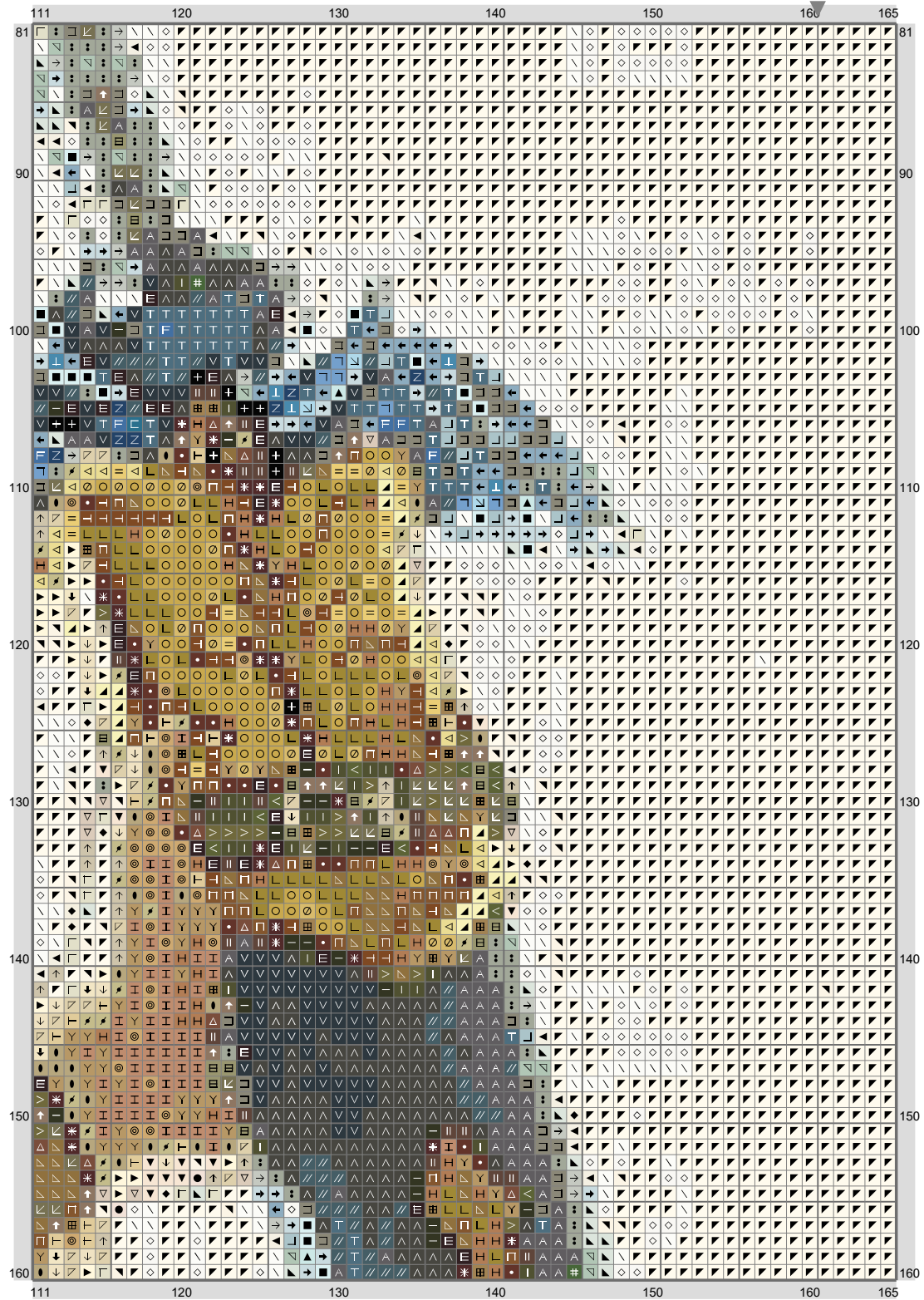


# Aserresa1111 Request



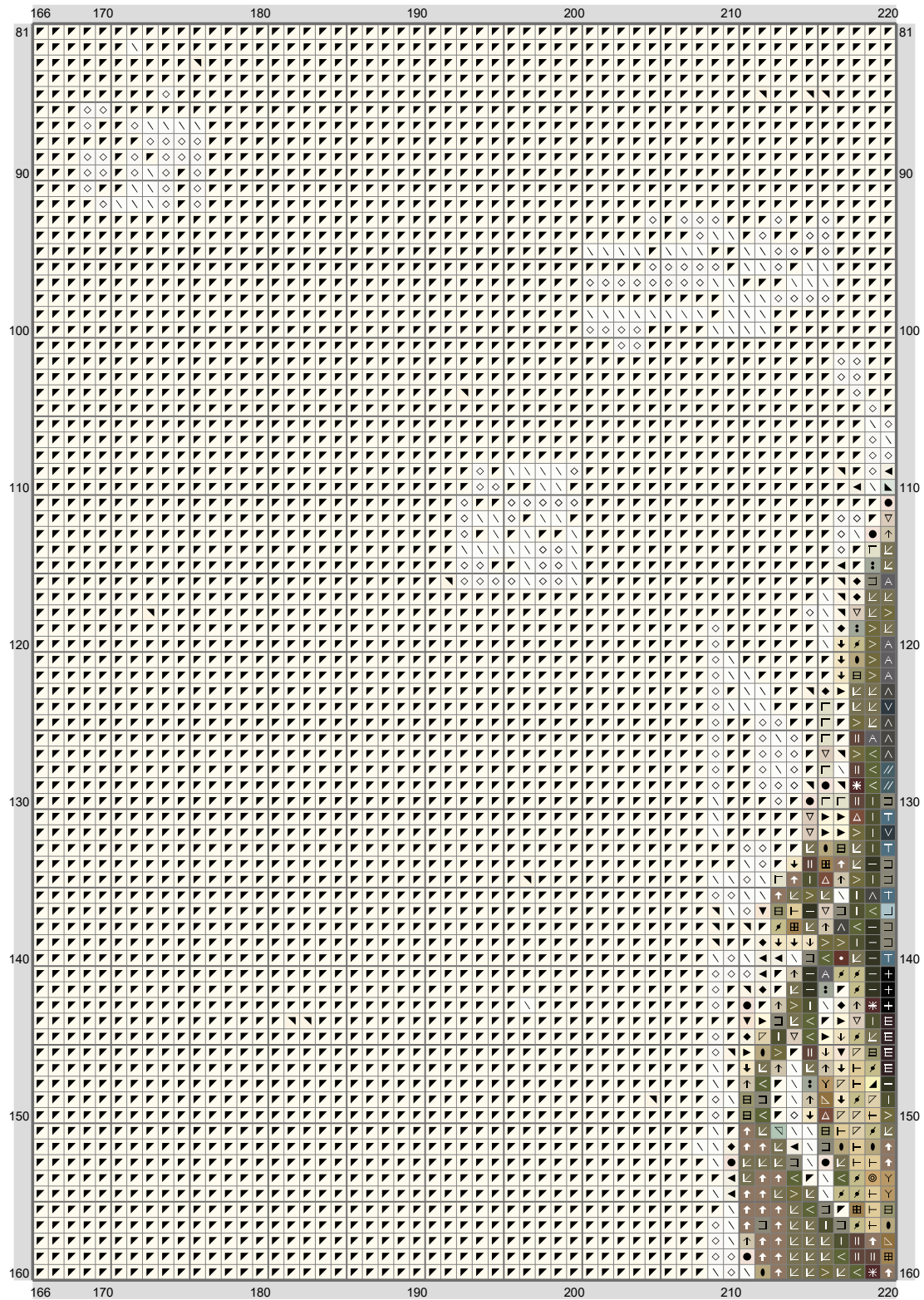
(This chart is printed using KG-Chart LE for Cross Stitch.)

# Aserresa1111 Request



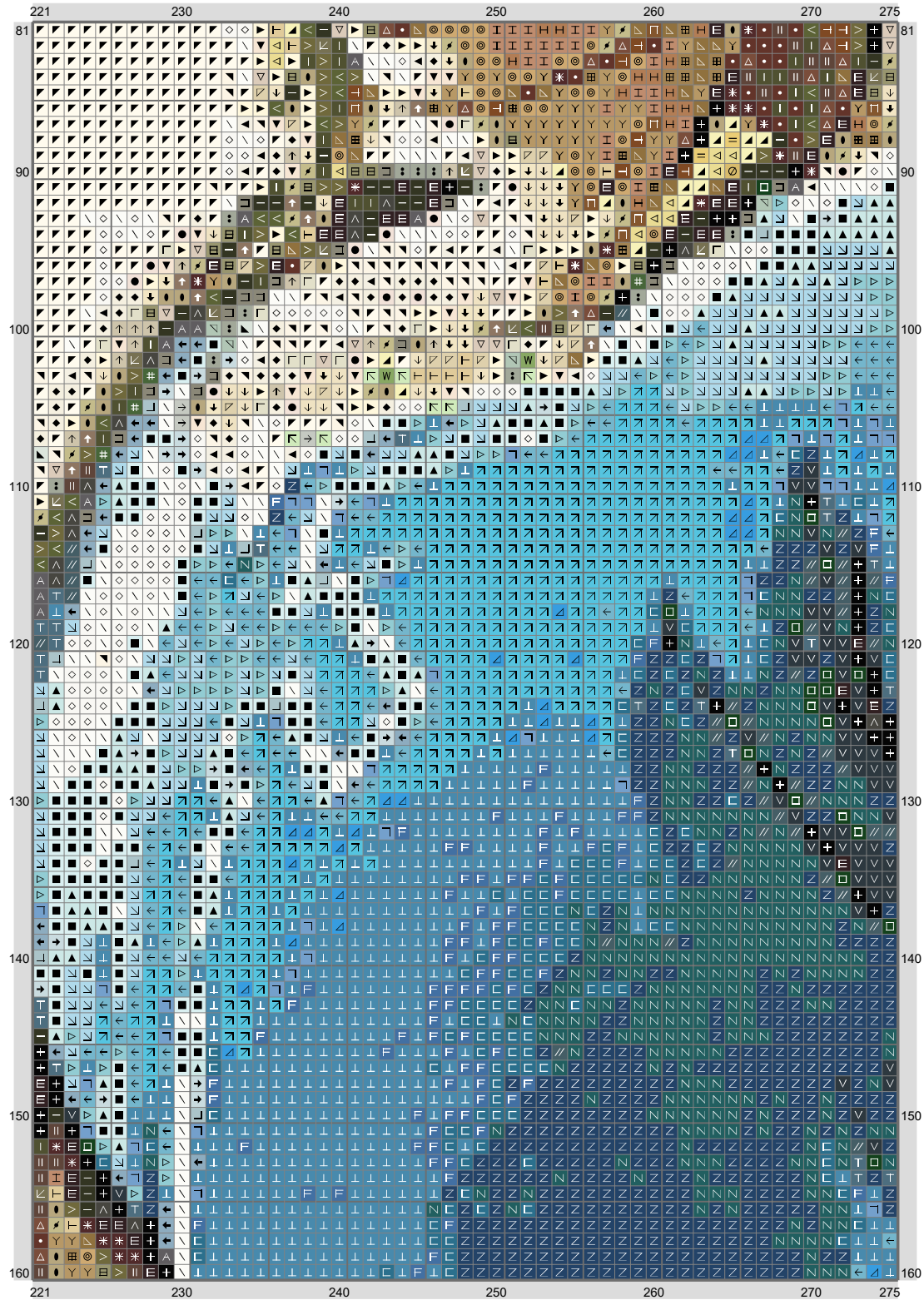
(This chart is printed using KG-Chart LE for Cross Stitch.)

# Aserresa1111 Request



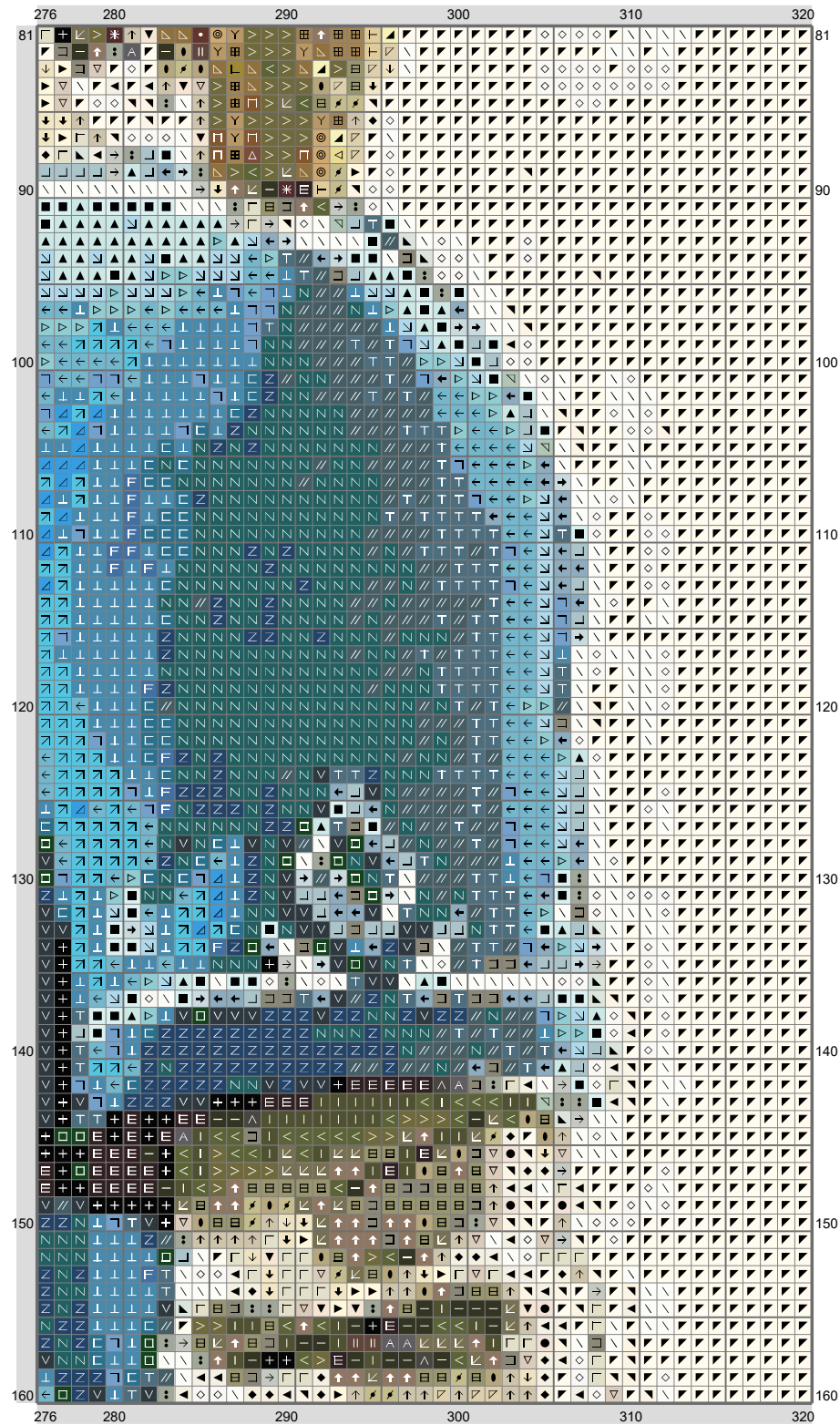
(This chart is printed using KG-Chart LE for Cross Stitch.)

# Aserresa1111 Request

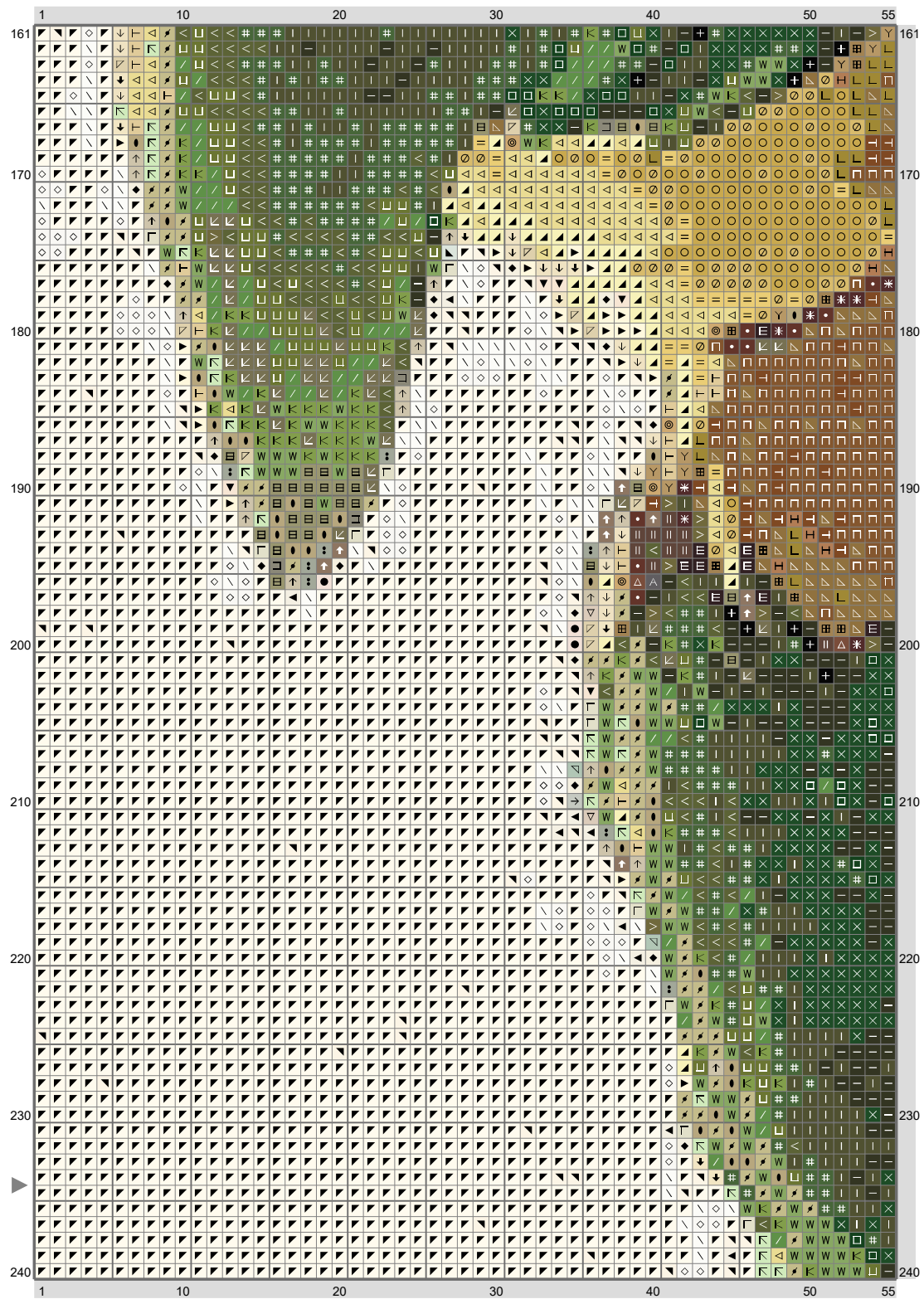


(This chart is printed using KG-Chart LE for Cross Stitch.)

# Aserresa1111 Request



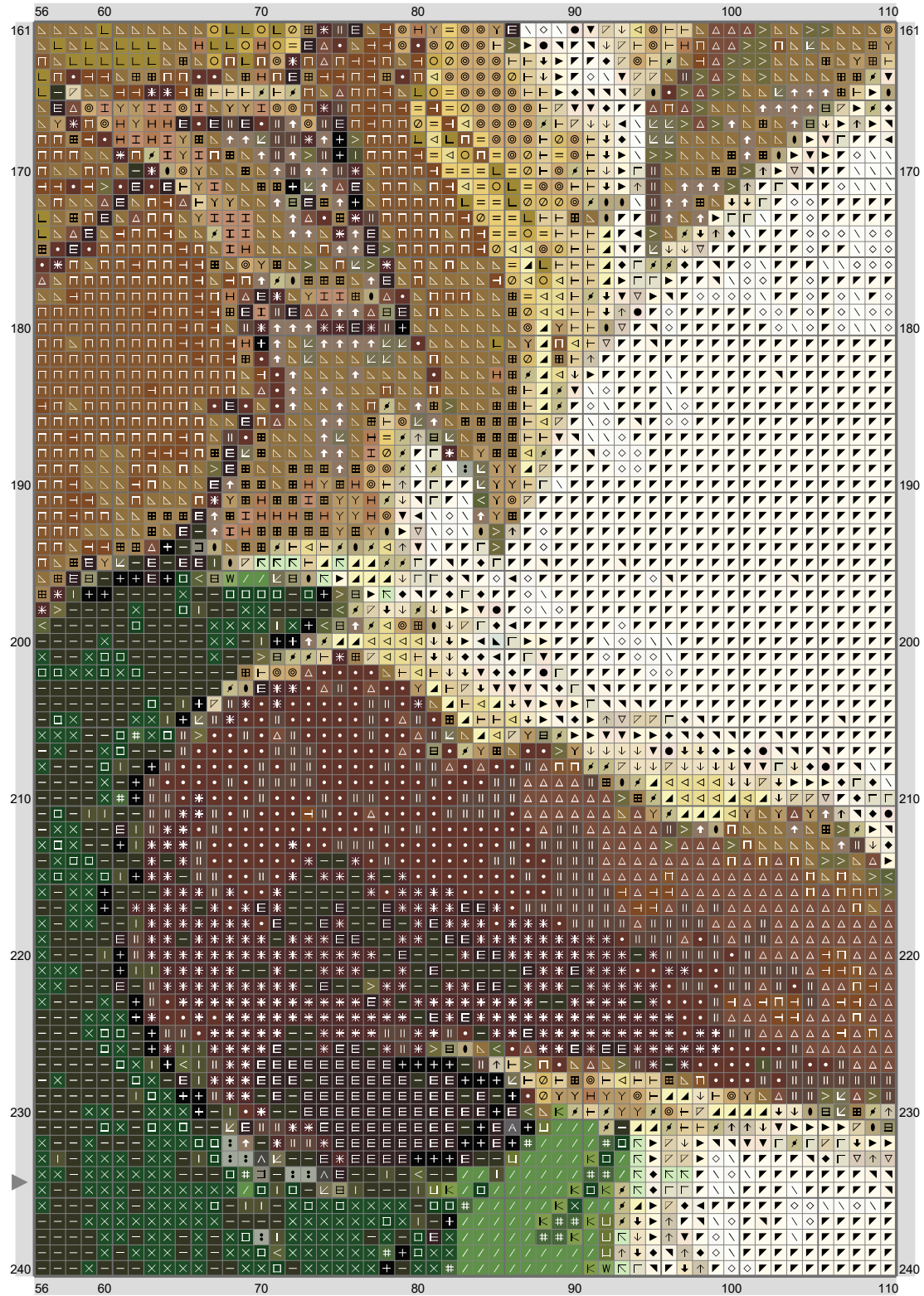
# Aserresa1111 Request



(This chart is printed using KG-Chart LE for Cross Stitch.)

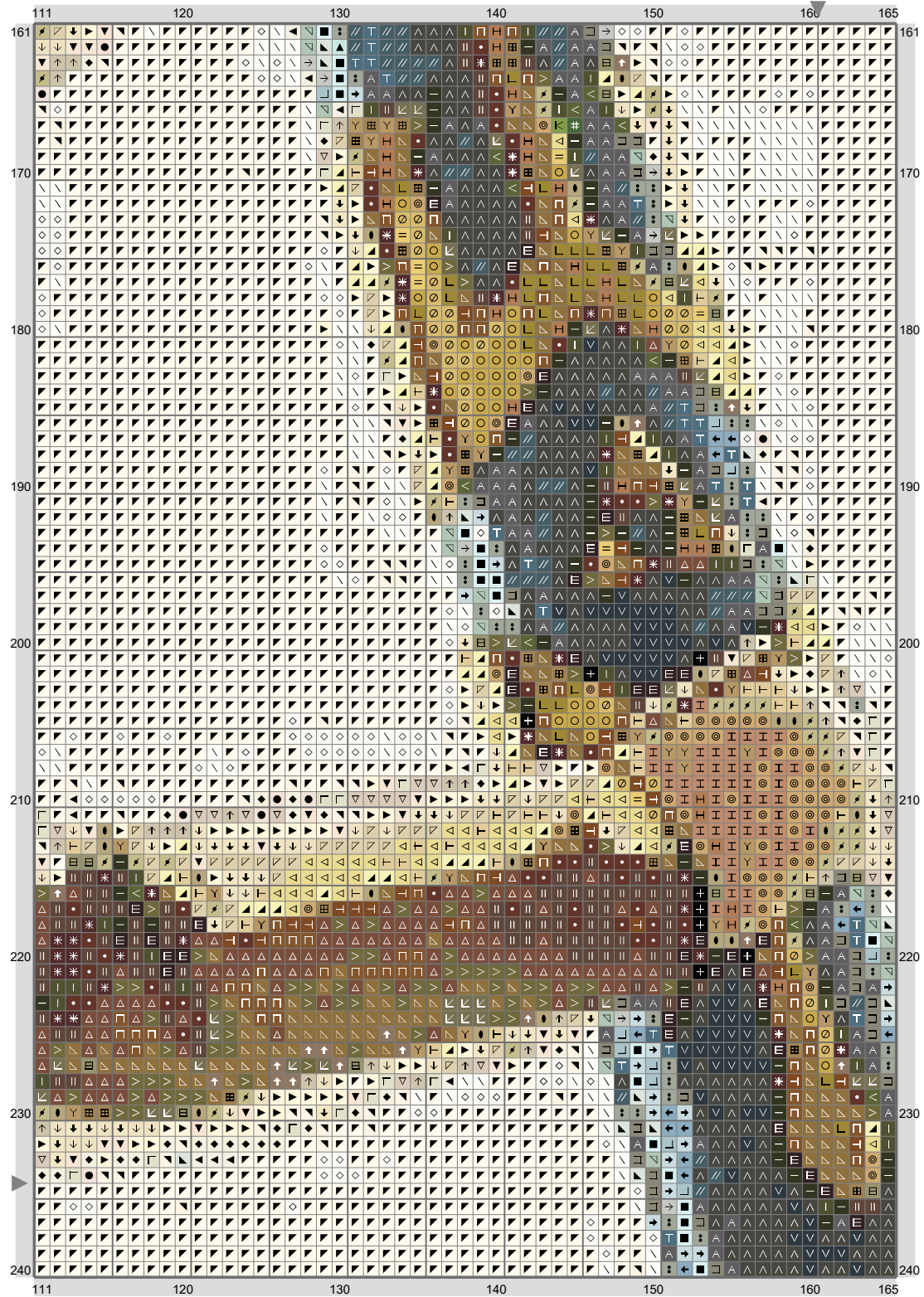


# Aserresa1111 Request

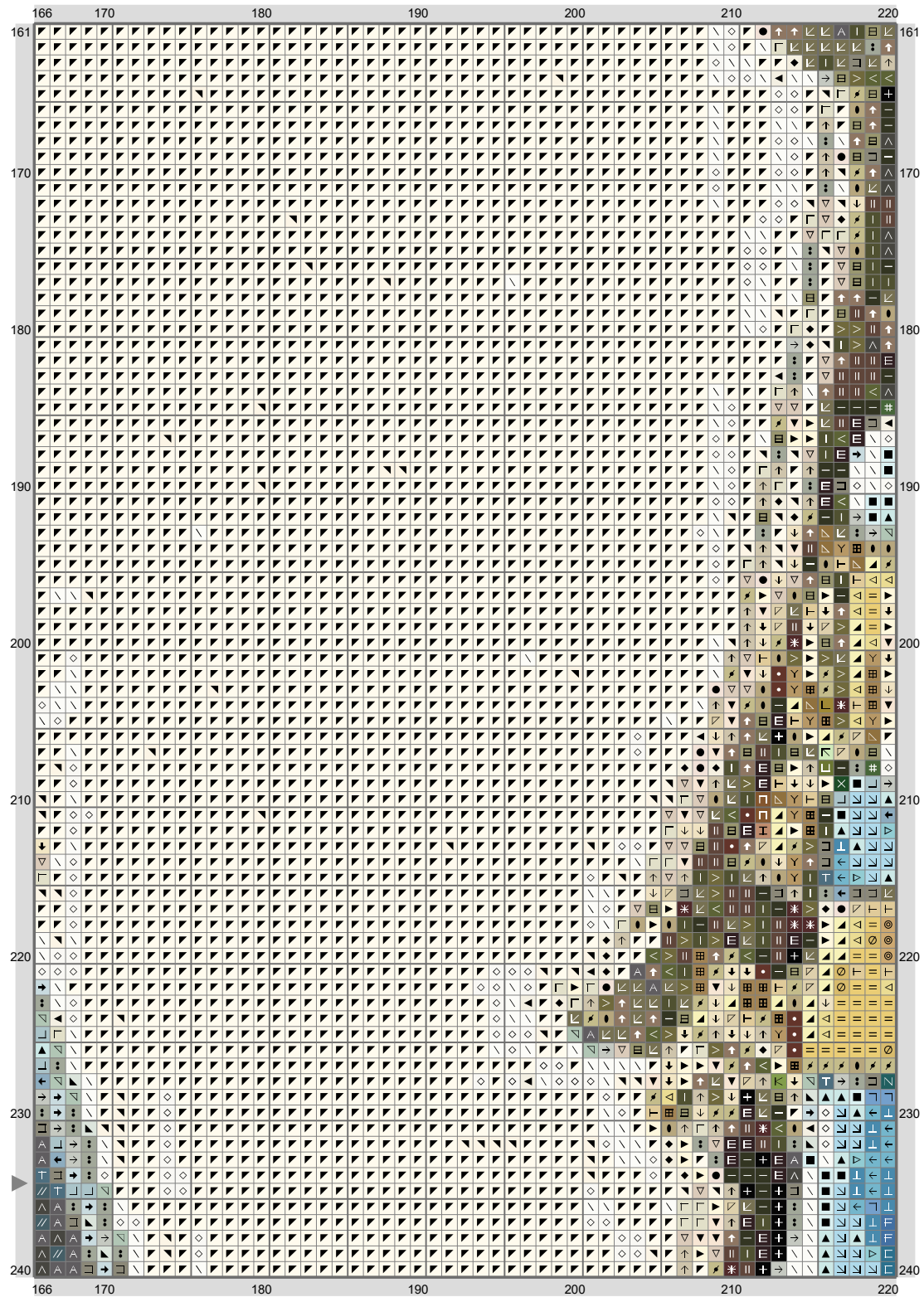




# Aserresa1111 Request



# Aserresa1111 Request

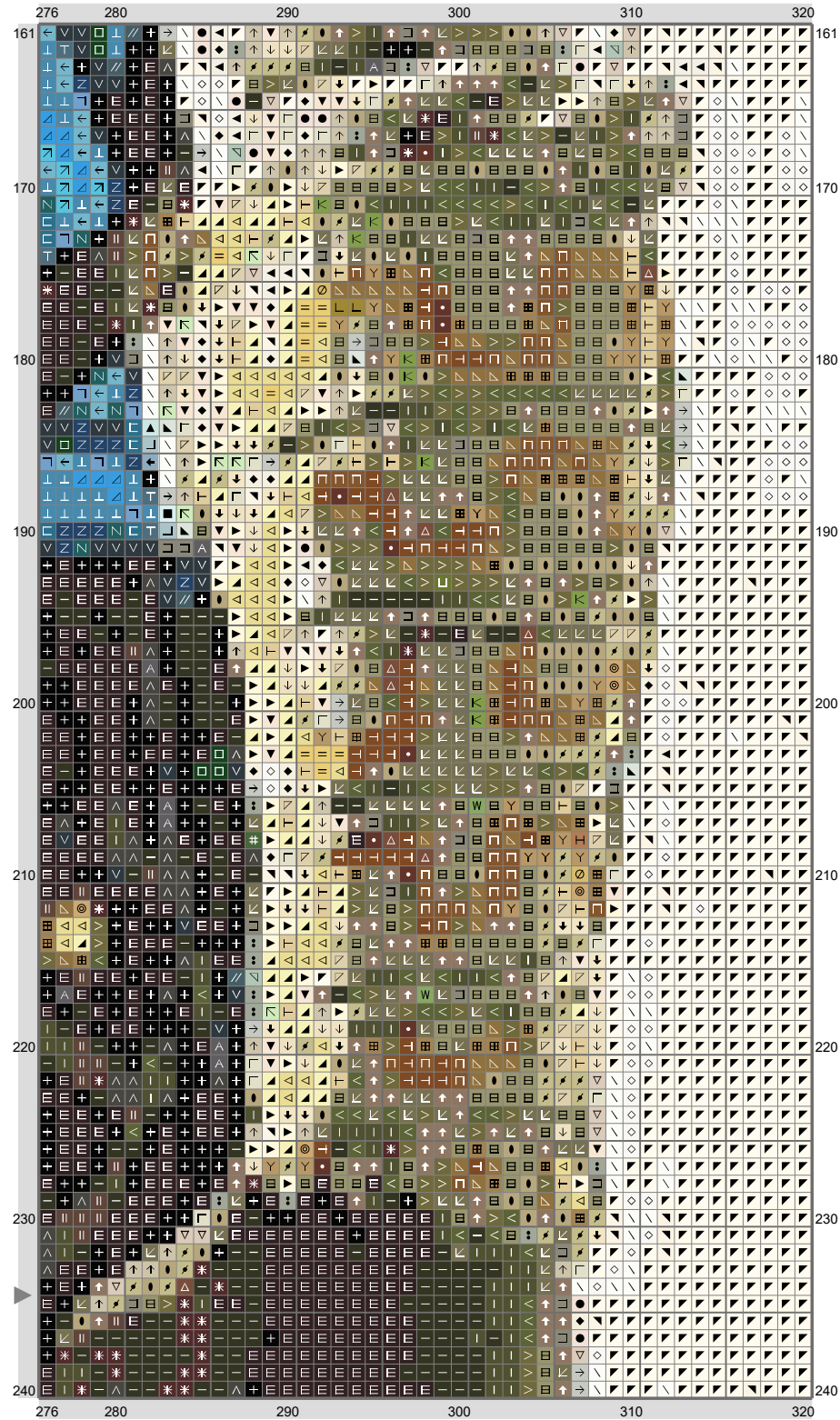


(This chart is printed using KG-Chart LE for Cross Stitch.)

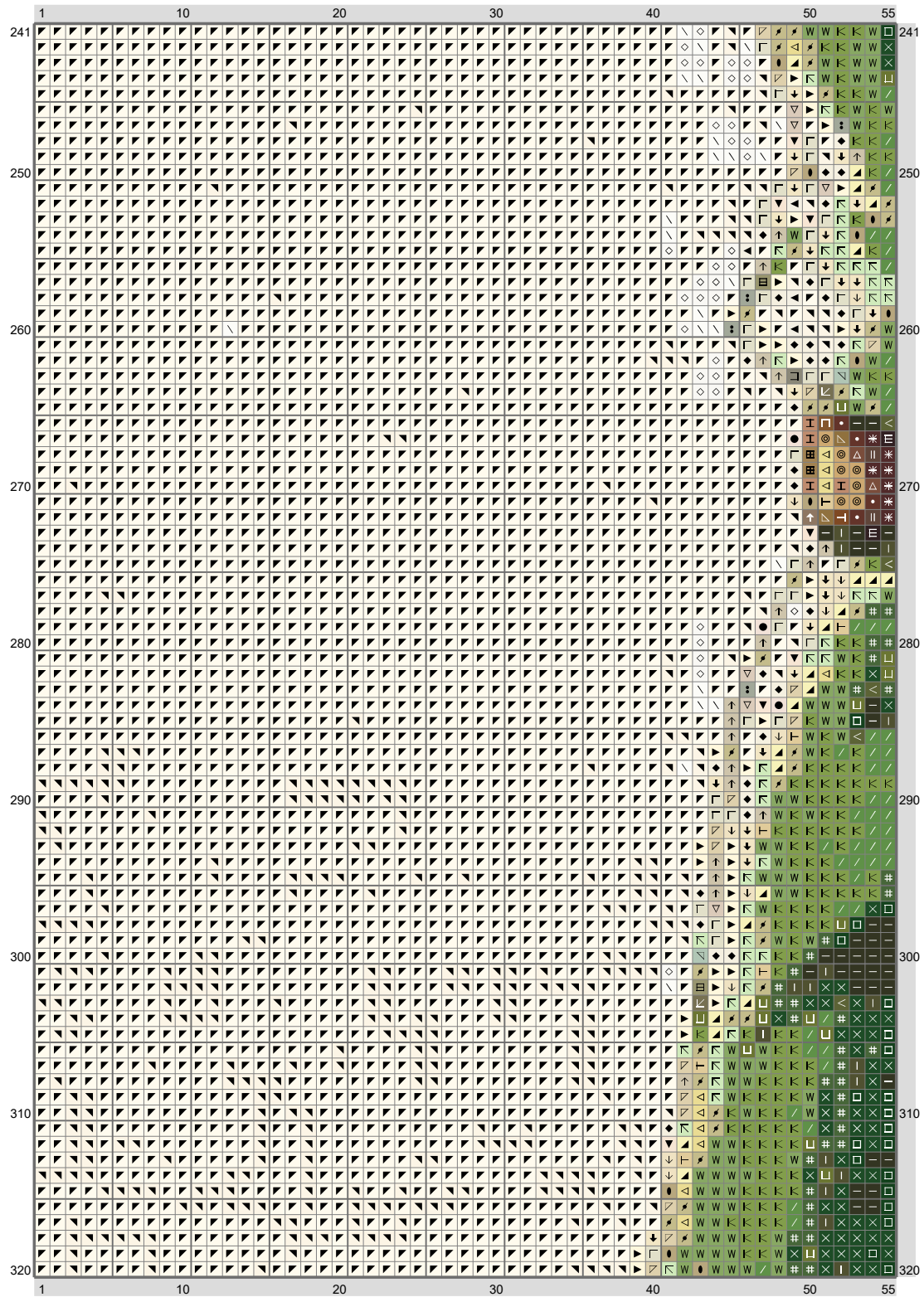
(This chart is printed using KG-Chart LE for Cross Stitch.)



# Aserresa1111 Request



# Aserresa1111 Request

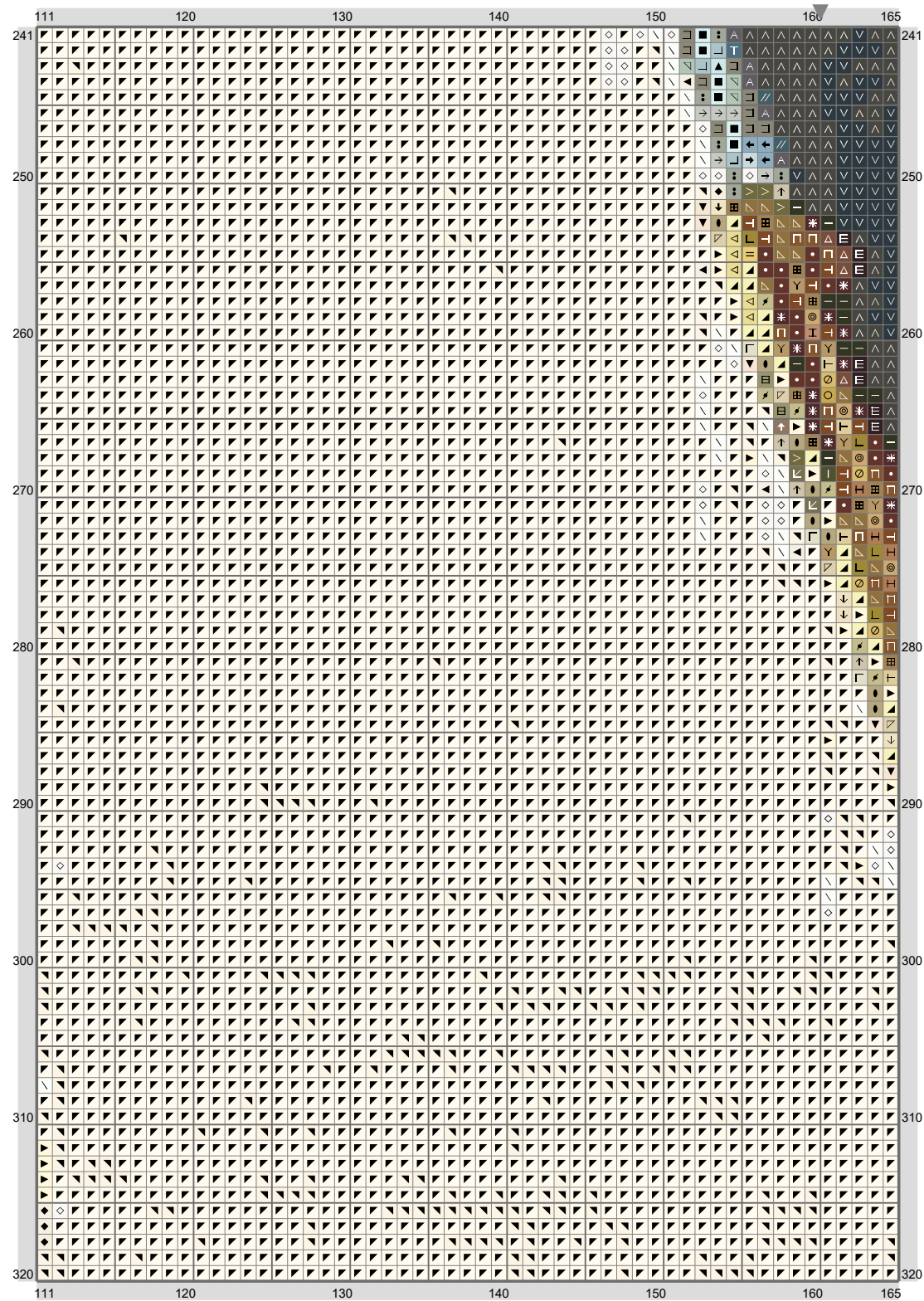


# Aserresa1111 Request





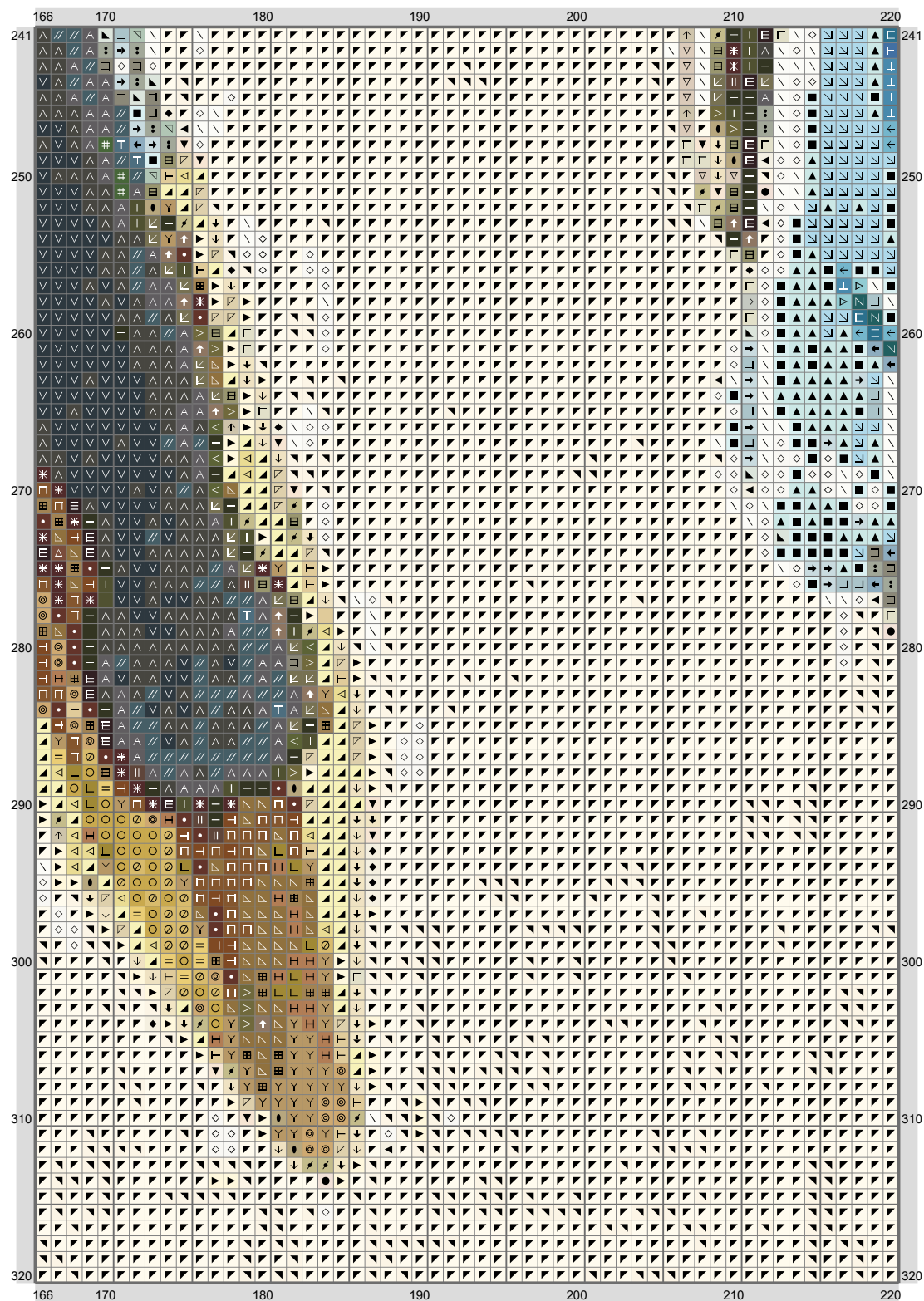
## Aserresa1111 Request



(This chart is printed using KG-Chart LE for Cross Stitch.)

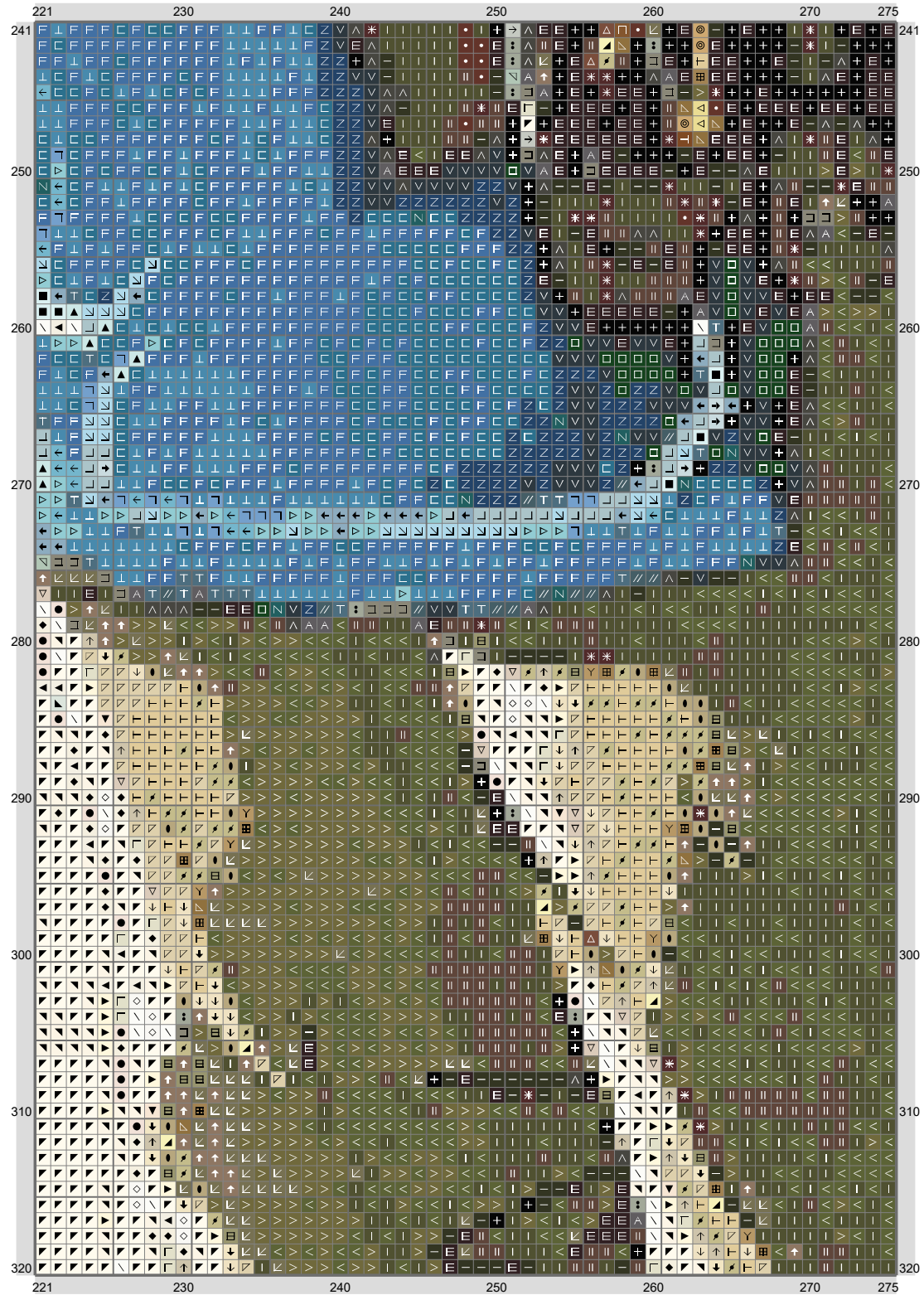


# Aserresa1111 Request



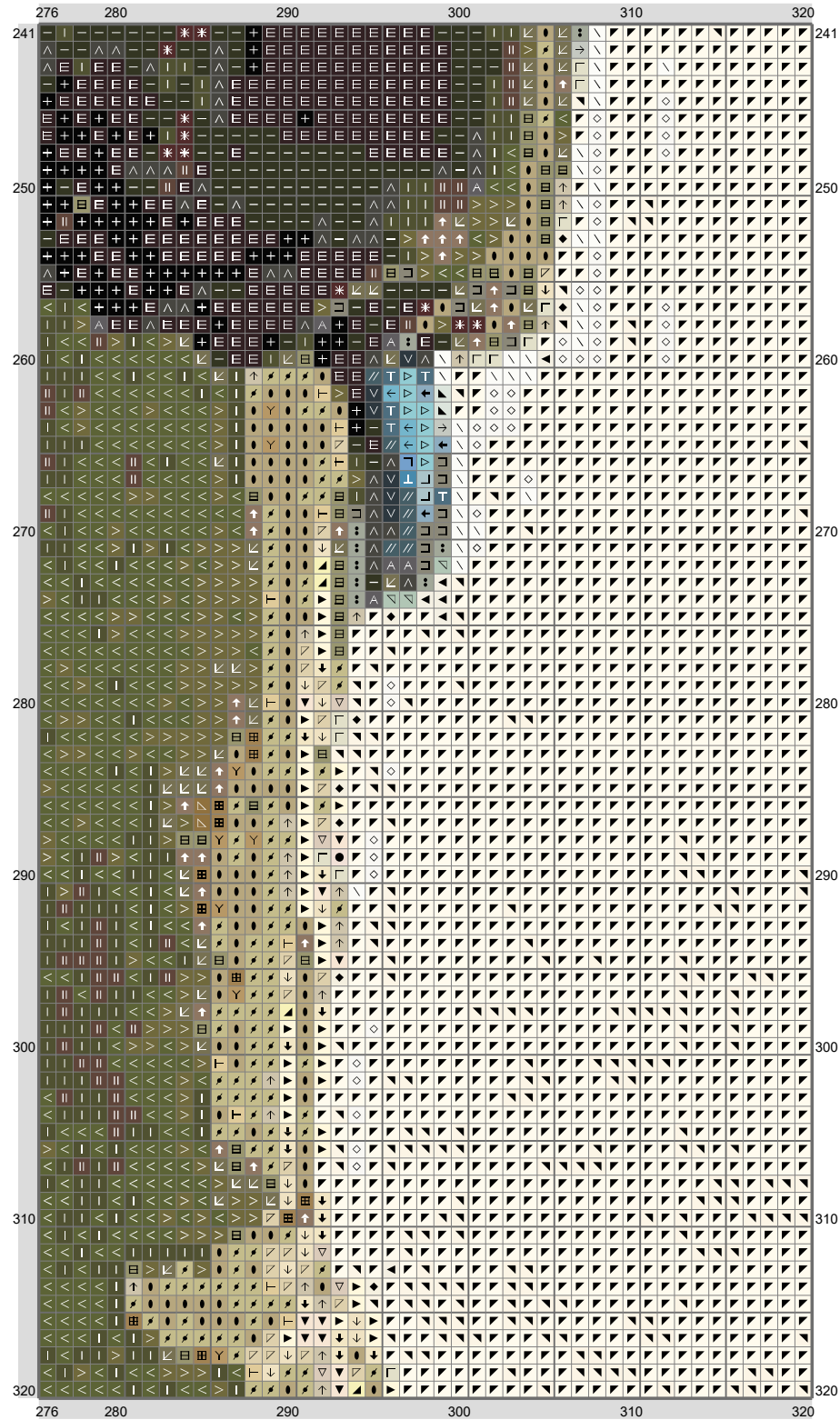
(This chart is printed using KG-Chart LE for Cross Stitch.)

# Aserresa1111 Request



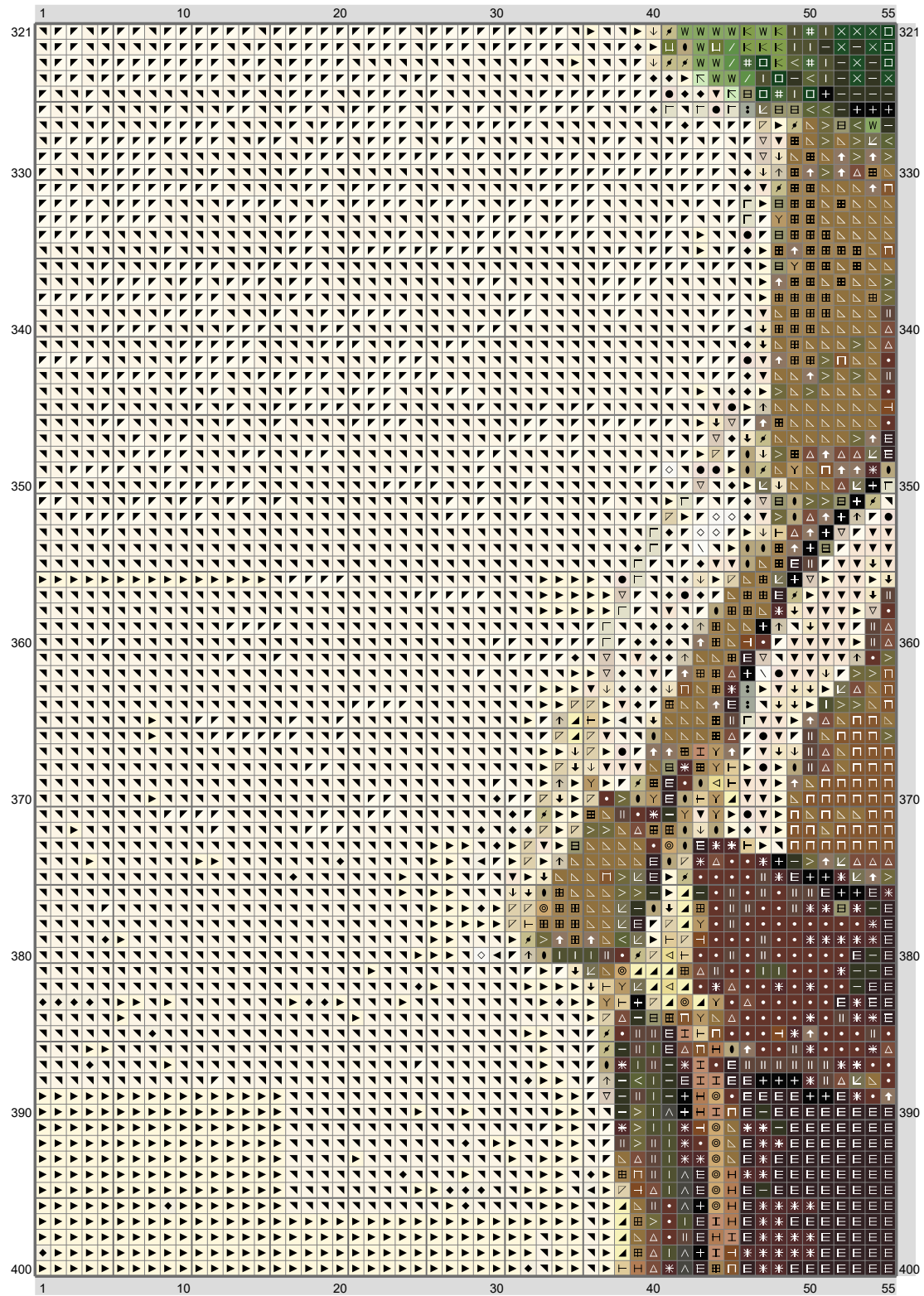
(This chart is printed using KG-Chart LE for Cross Stitch.)

# Aserresa1111 Request



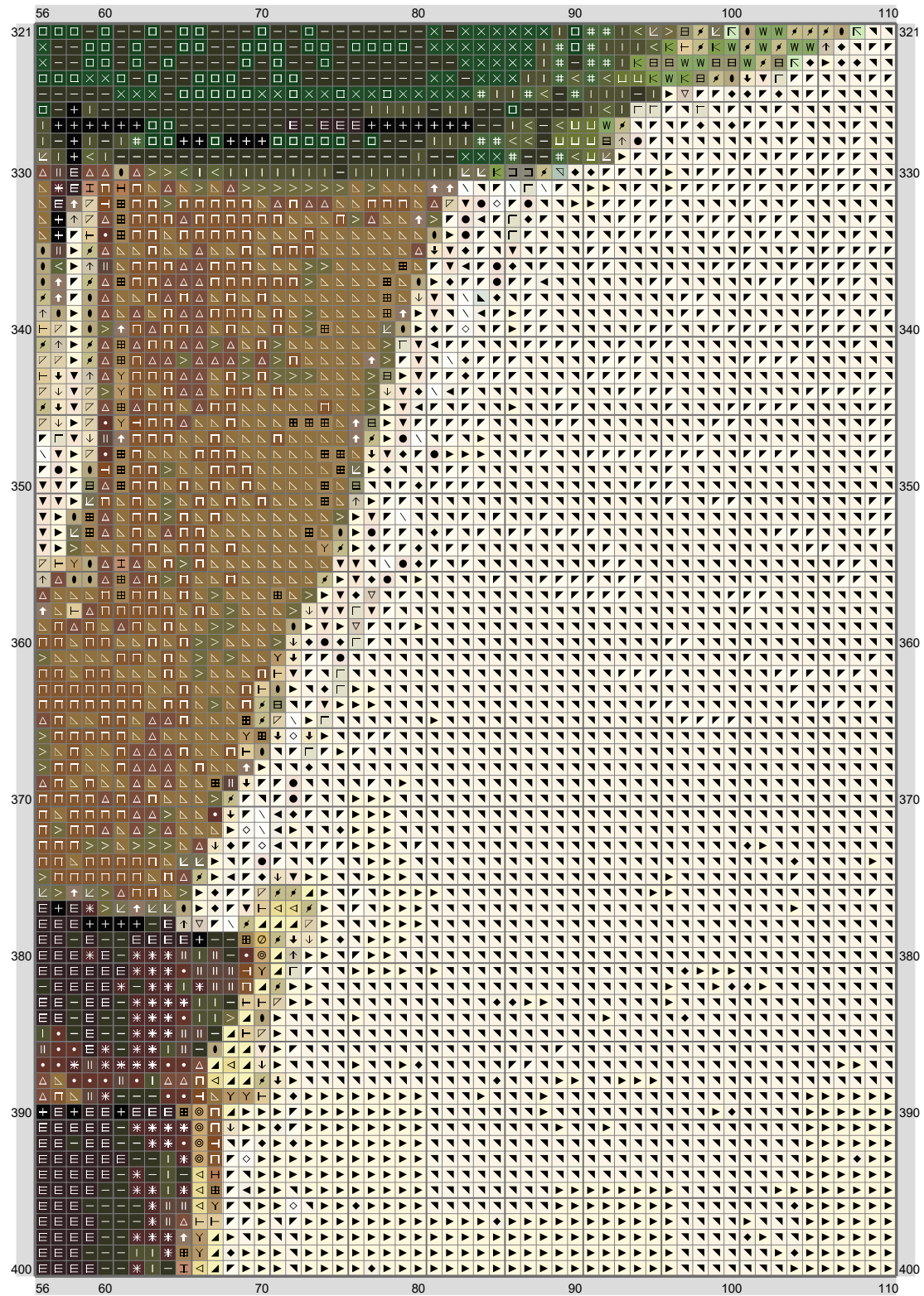
(This chart is printed using KG-Chart LE for Cross Stitch.)

# Aserresa1111 Request

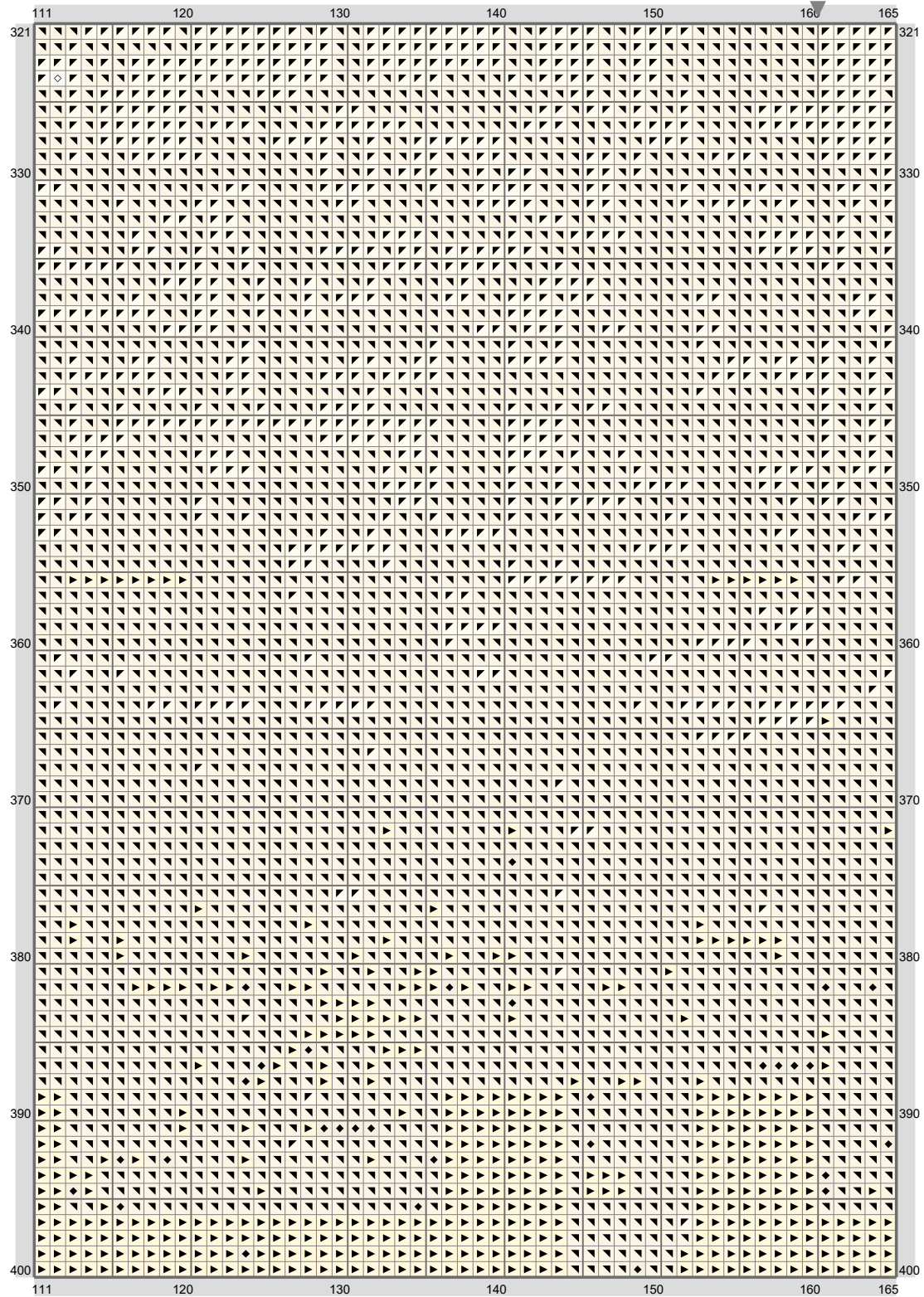


(This chart is printed using KG-Chart LE for Cross Stitch.)

# Aserresa1111 Request



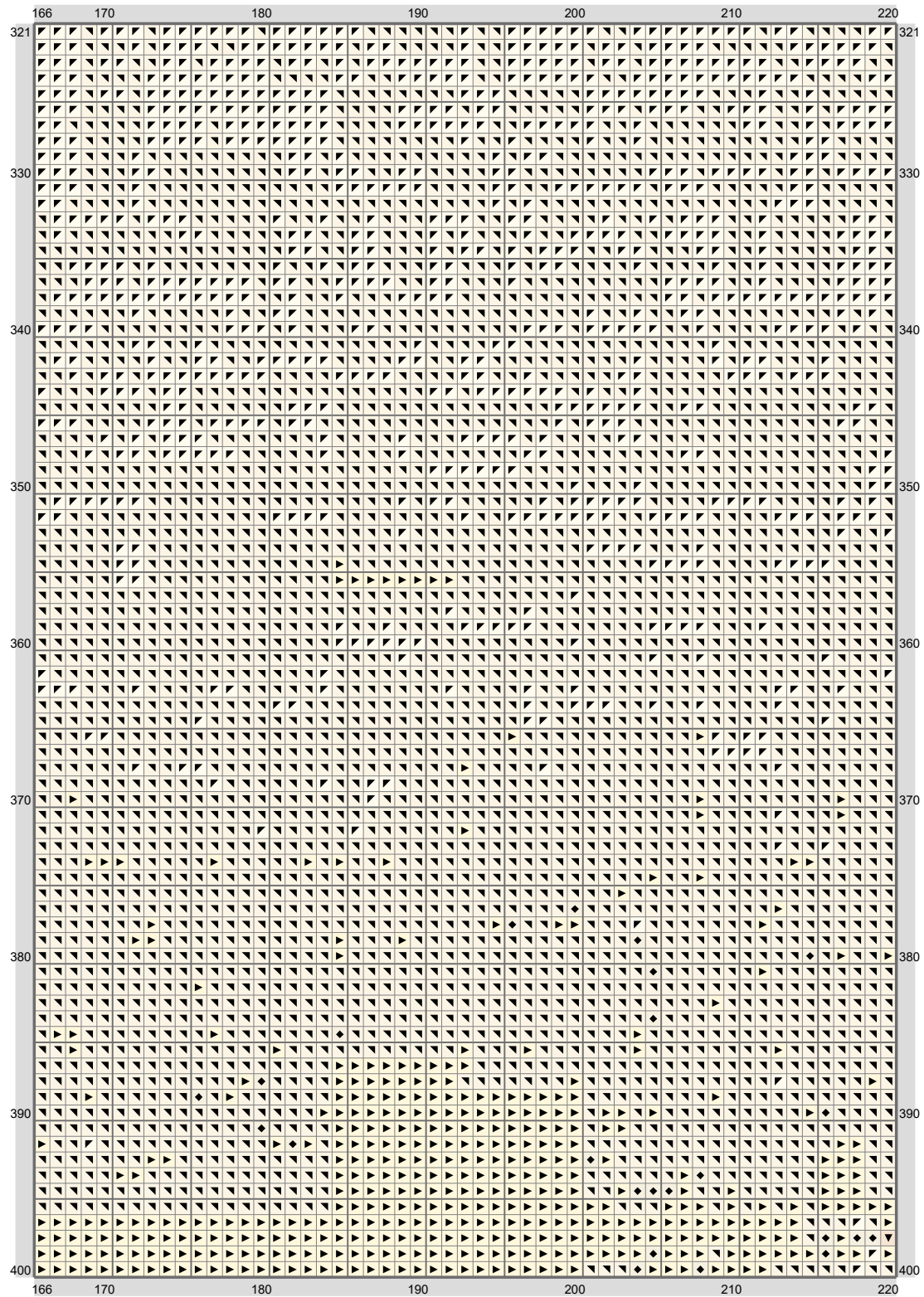
# Aserresa1111 Request



(This chart is printed using KG-Chart LE for Cross Stitch.)



## Aserresa1111 Request



(This chart is printed using KG-Chart LE for Cross Stitch.)



# Aserresa1111 Request

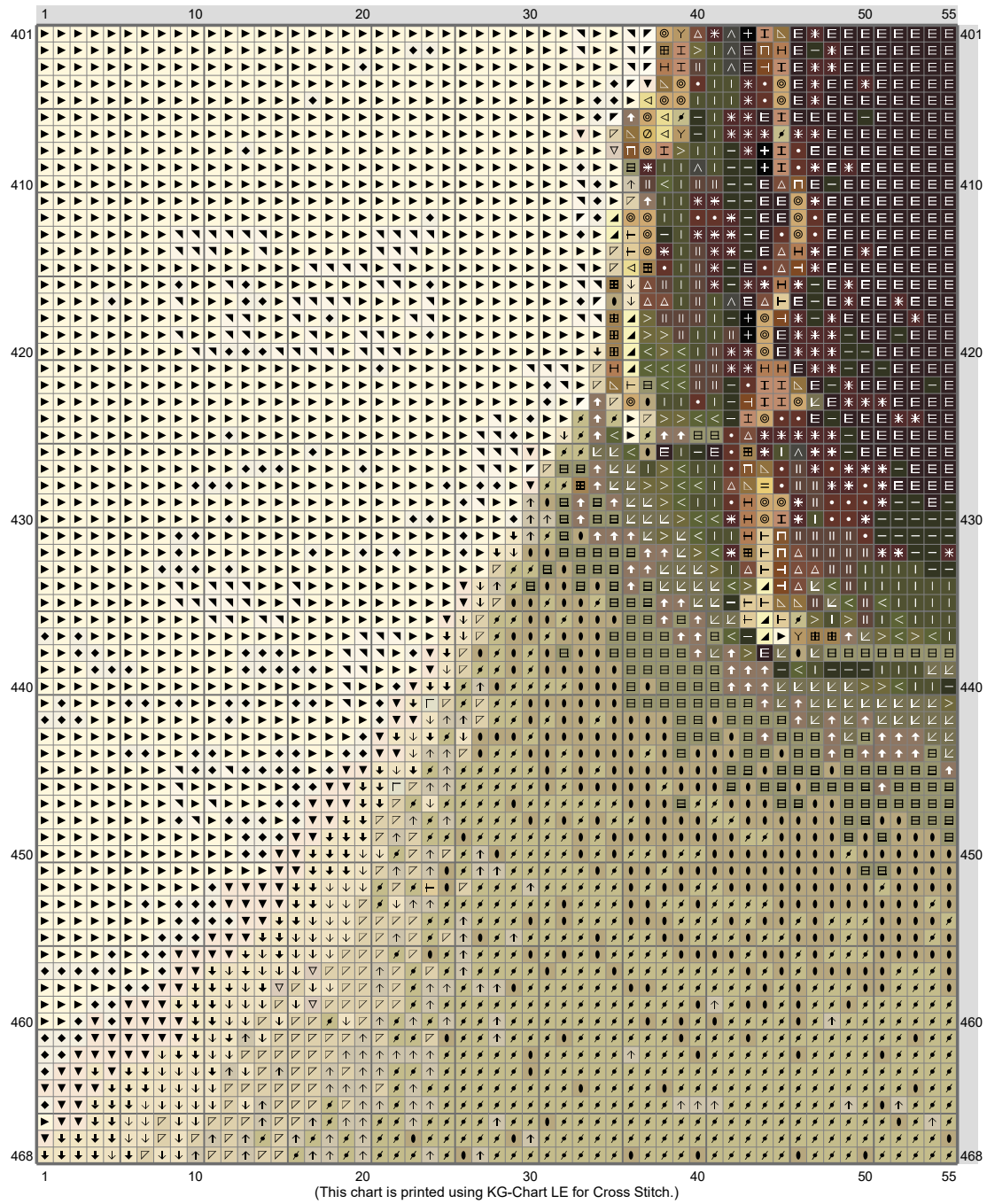


# Aserresa1111 Request

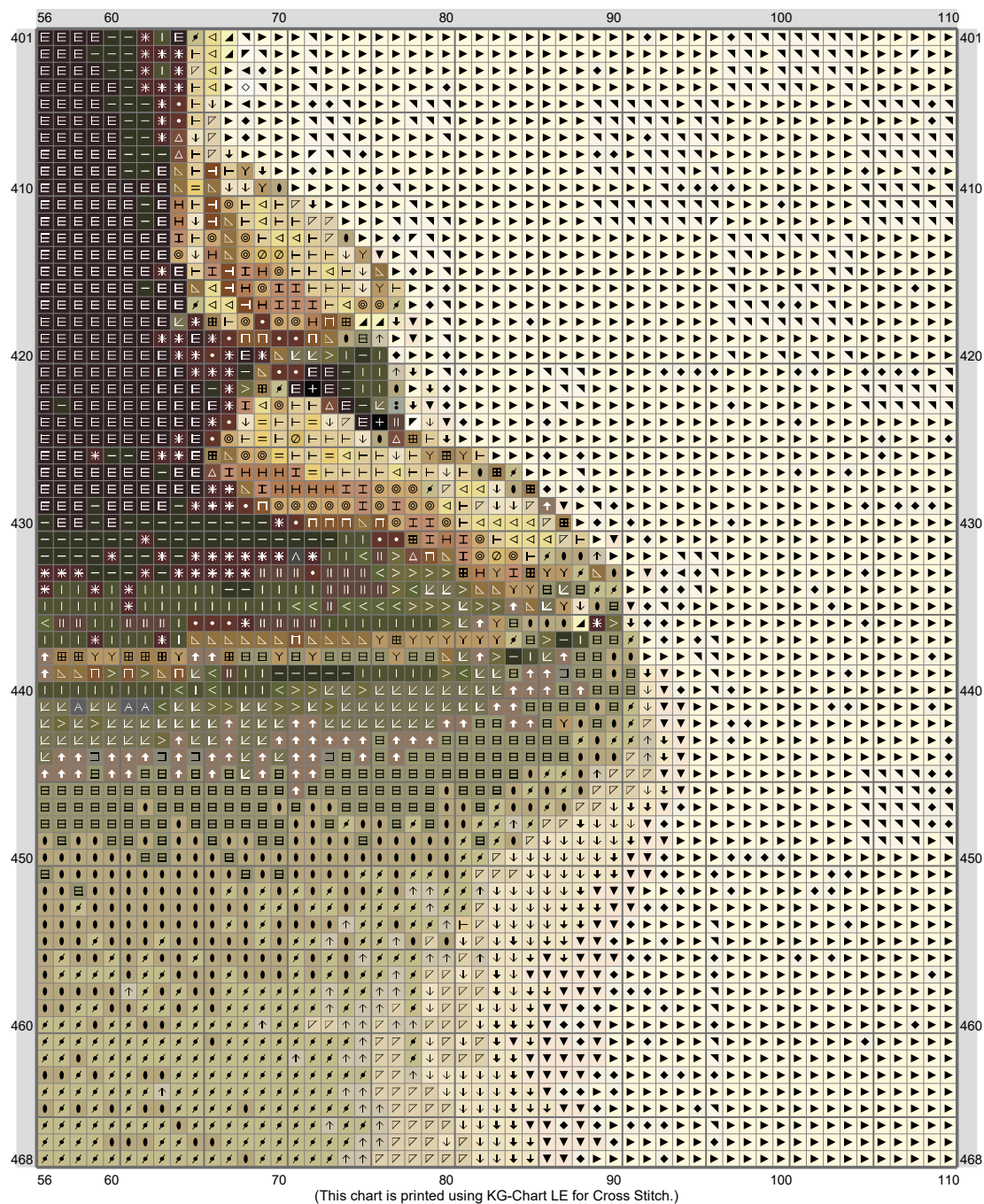


(This chart is printed using KG-Chart LE for Cross Stitch.)

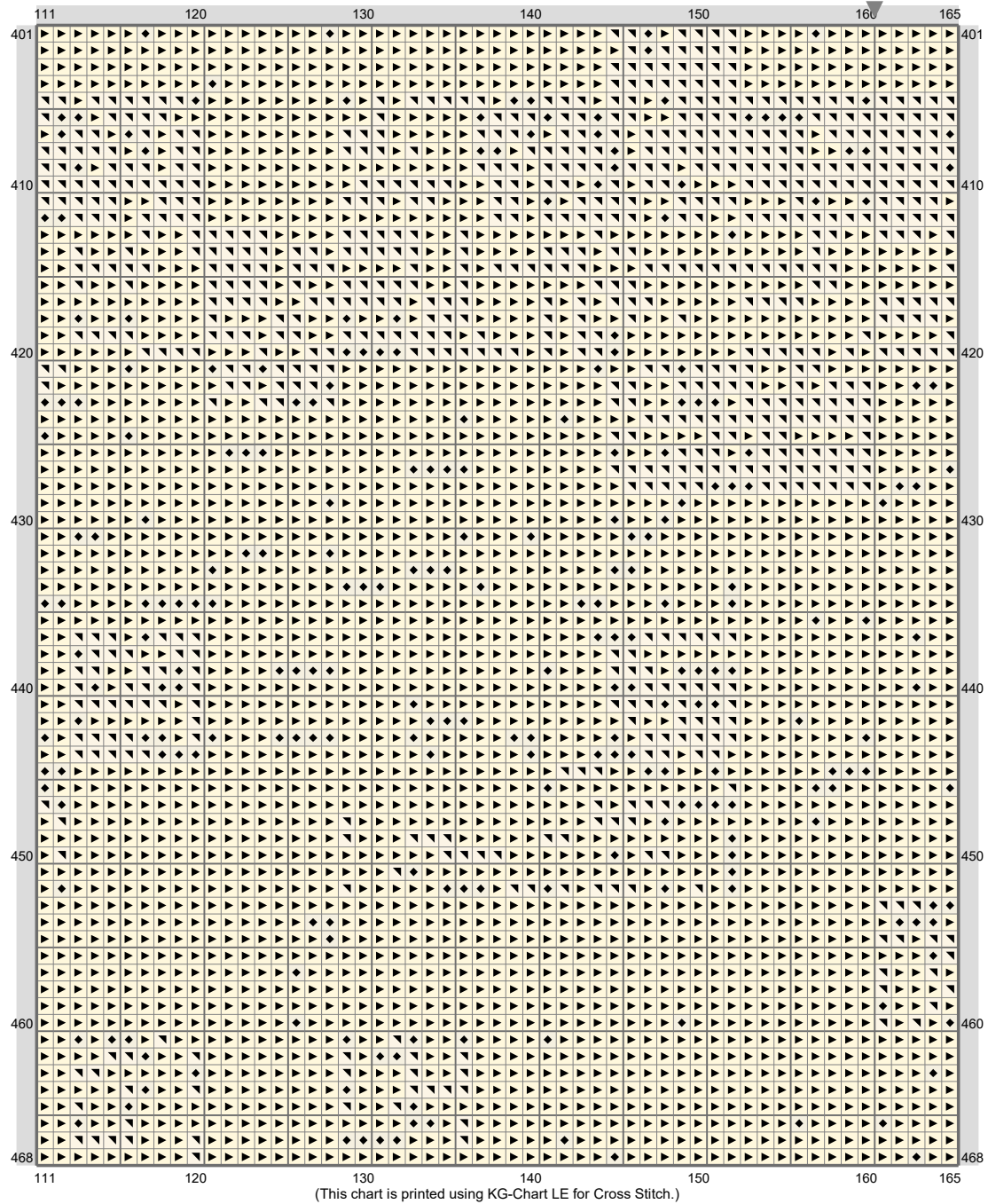
# Aserresa1111 Request



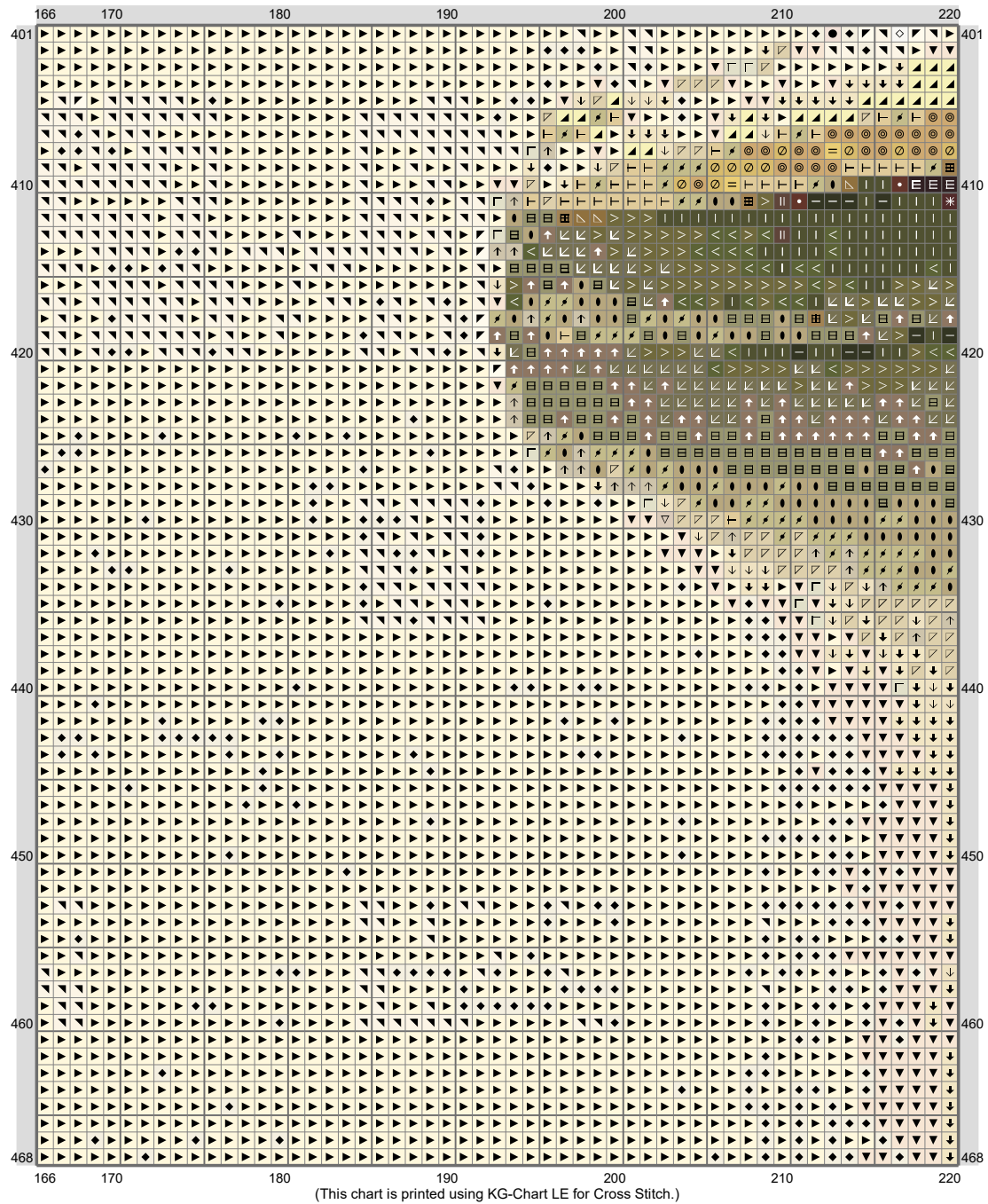
## Aserresa1111 Request



## Aserresa1111 Request

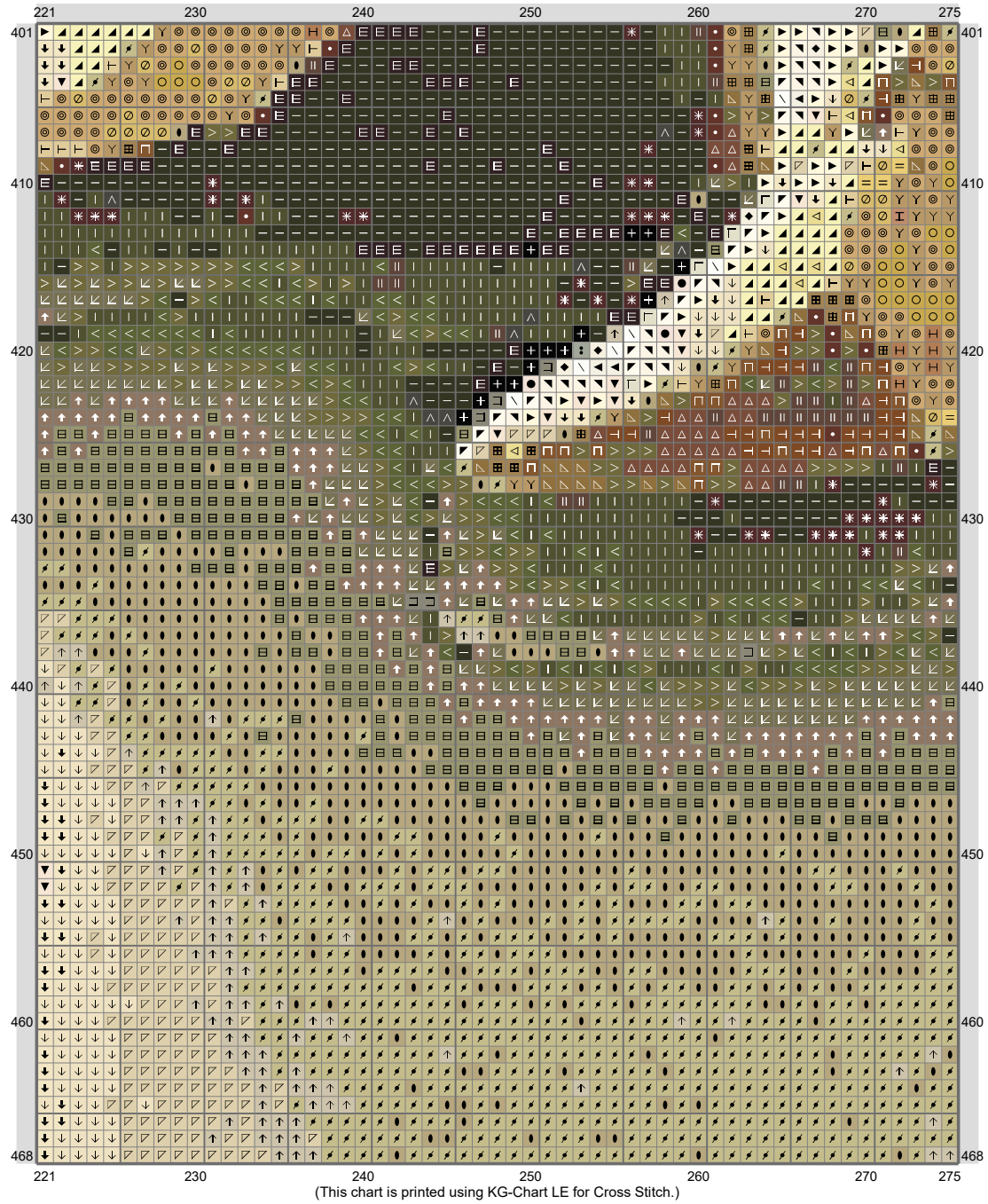


# Aserresa1111 Request



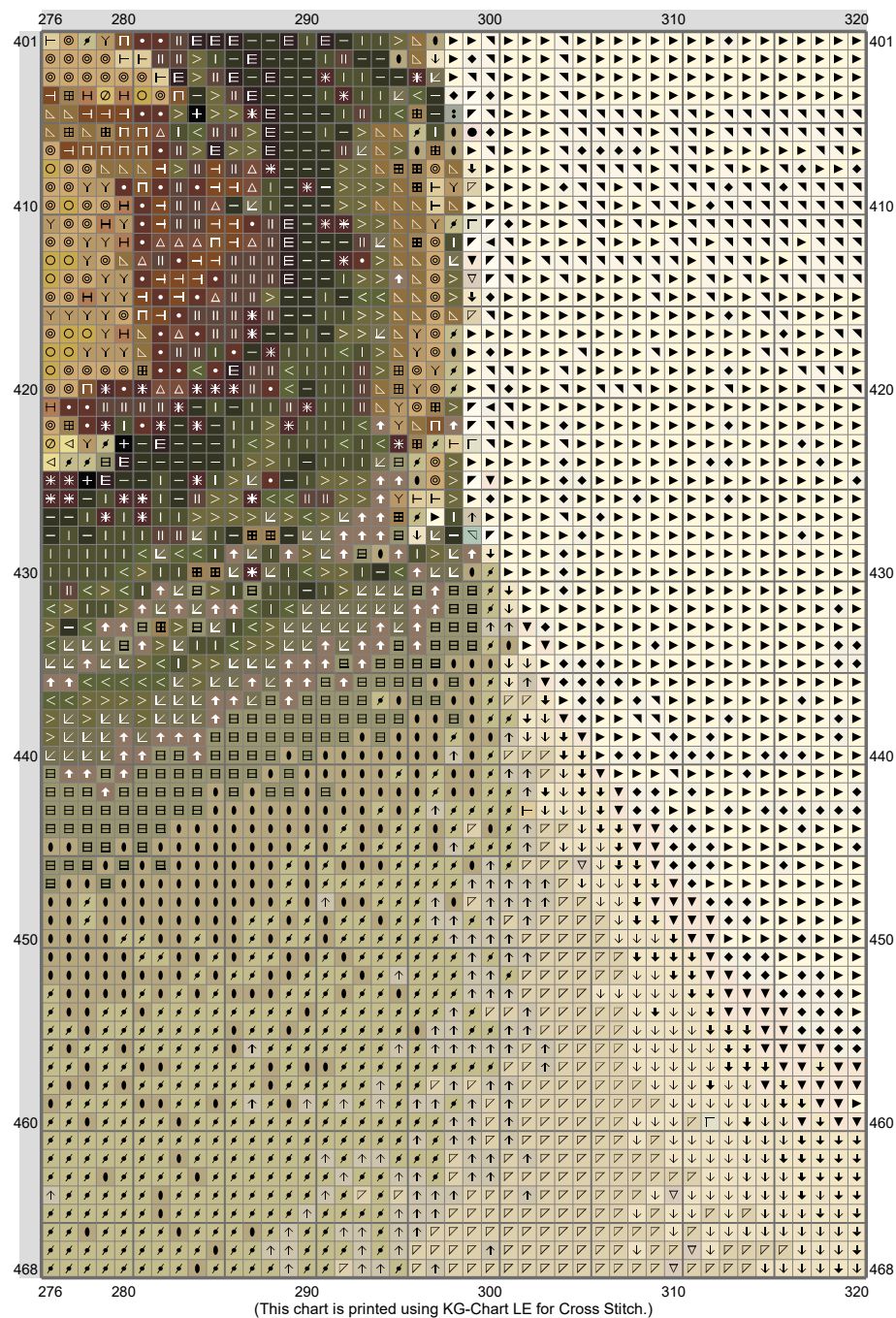


# Aserresa1111 Request





## Aserresa1111 Request



## Aserresa1111 Request

Stitch Count: 320w x 468h  
 Finished Size: 58.05 cm x 84.90 cm (14 ct./inch)  
 Cloth: Aida  
 Cloth's Color: White  
 # of colors: 79 Colors

Color Table (DMC)

Cross Stitch							
	310	(1327 ct)		470	(432 ct)		3078 (925 ct)
	939	(3308 ct)		3347	(466 ct)		739 (787 ct)
	890	(1165 ct)		371	(821 ct)		3823 (11440 ct)
	934	(5156 ct)		372	(2102 ct)		3866 (15188 ct)
	319	(865 ct)		3022	(339 ct)		712 (52348 ct)
	3371	(1464 ct)		3013	(2780 ct)		BLANC (2564 ct)
	936	(3806 ct)		832	(545 ct)		
	3345	(498 ct)		729	(893 ct)		
	938	(1498 ct)		833	(343 ct)		
	500	(794 ct)		3822	(371 ct)		
	3021	(899 ct)		524	(801 ct)		
	3031	(1548 ct)		3046	(823 ct)		
	937	(1785 ct)		165	(654 ct)		
	469	(214 ct)		996	(63 ct)		
	988	(624 ct)		334	(141 ct)		
	3750	(1072 ct)		3846	(543 ct)		
	3808	(754 ct)		518	(333 ct)		
	924	(444 ct)		931	(184 ct)		
	535	(367 ct)		3766	(198 ct)		
	3765	(516 ct)		3817	(110 ct)		
	517	(750 ct)		932	(154 ct)		
	930	(327 ct)		827	(387 ct)		
	3760	(1402 ct)		3023	(127 ct)		
	829	(504 ct)		613	(231 ct)		
	869	(1253 ct)		3047	(1207 ct)		
	433	(804 ct)		644	(501 ct)		
	3011	(1967 ct)		772	(193 ct)		
	830	(1964 ct)		677	(900 ct)		
	732	(336 ct)		745	(768 ct)		
	3051	(1287 ct)		775	(145 ct)		
	3790	(989 ct)		3072	(147 ct)		
	640	(376 ct)		828	(229 ct)		
	831	(948 ct)		3841	(413 ct)		
	3052	(1381 ct)		543	(181 ct)		
	420	(496 ct)		746	(1631 ct)		
	3863	(555 ct)		ECRU	(311 ct)		
				387	(387 ct)		
				385	(2598 ct)		