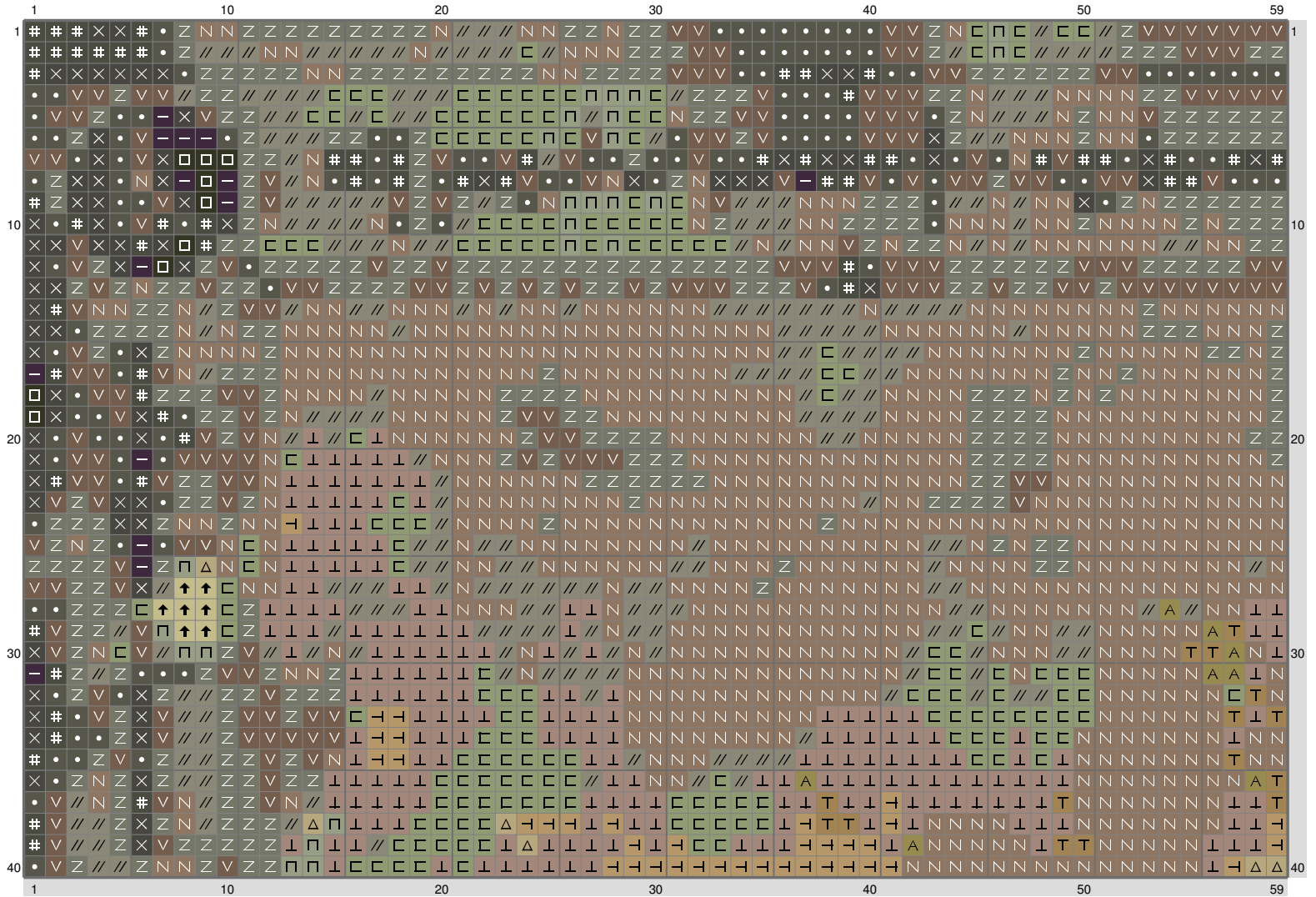


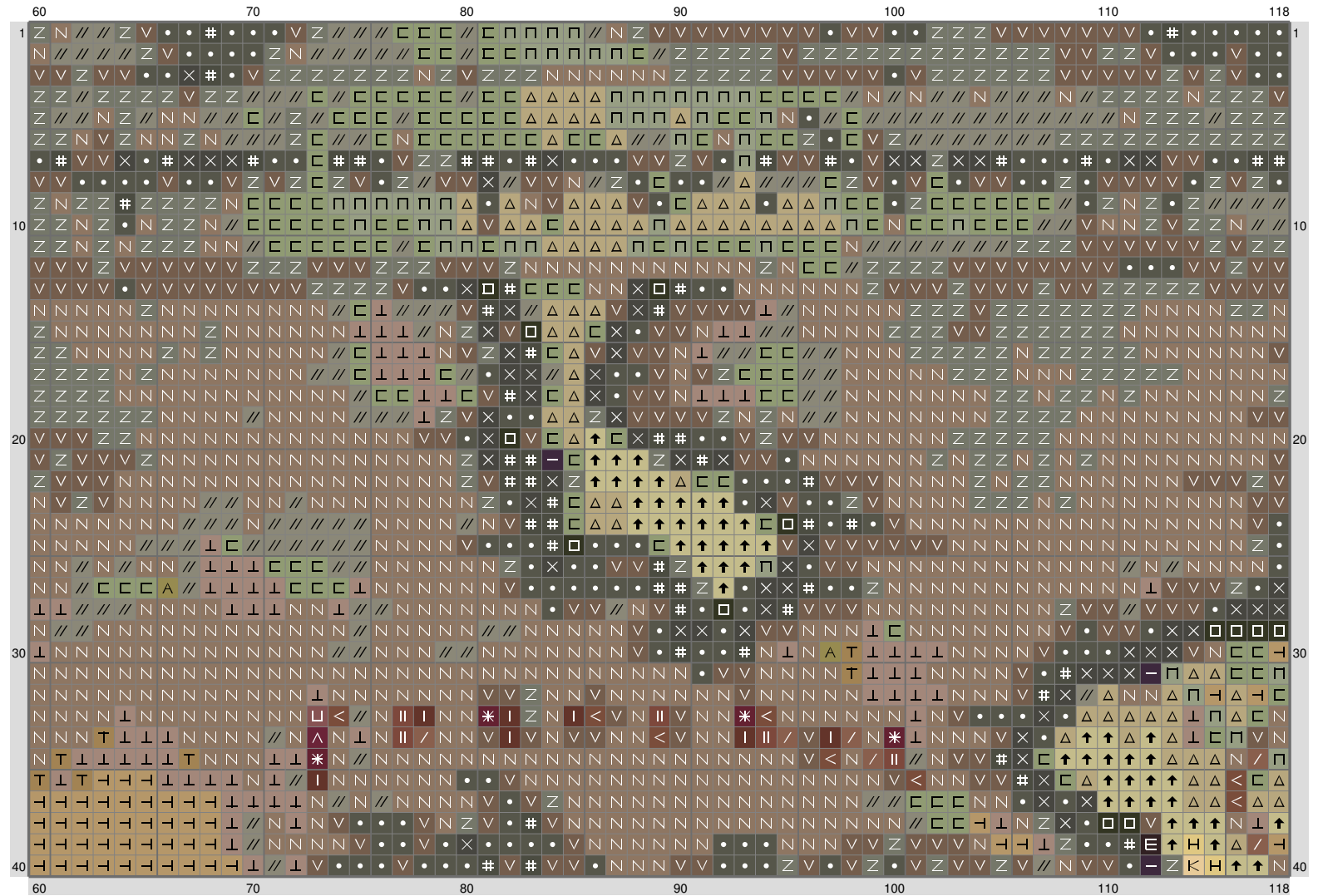
## Middle Earth Map



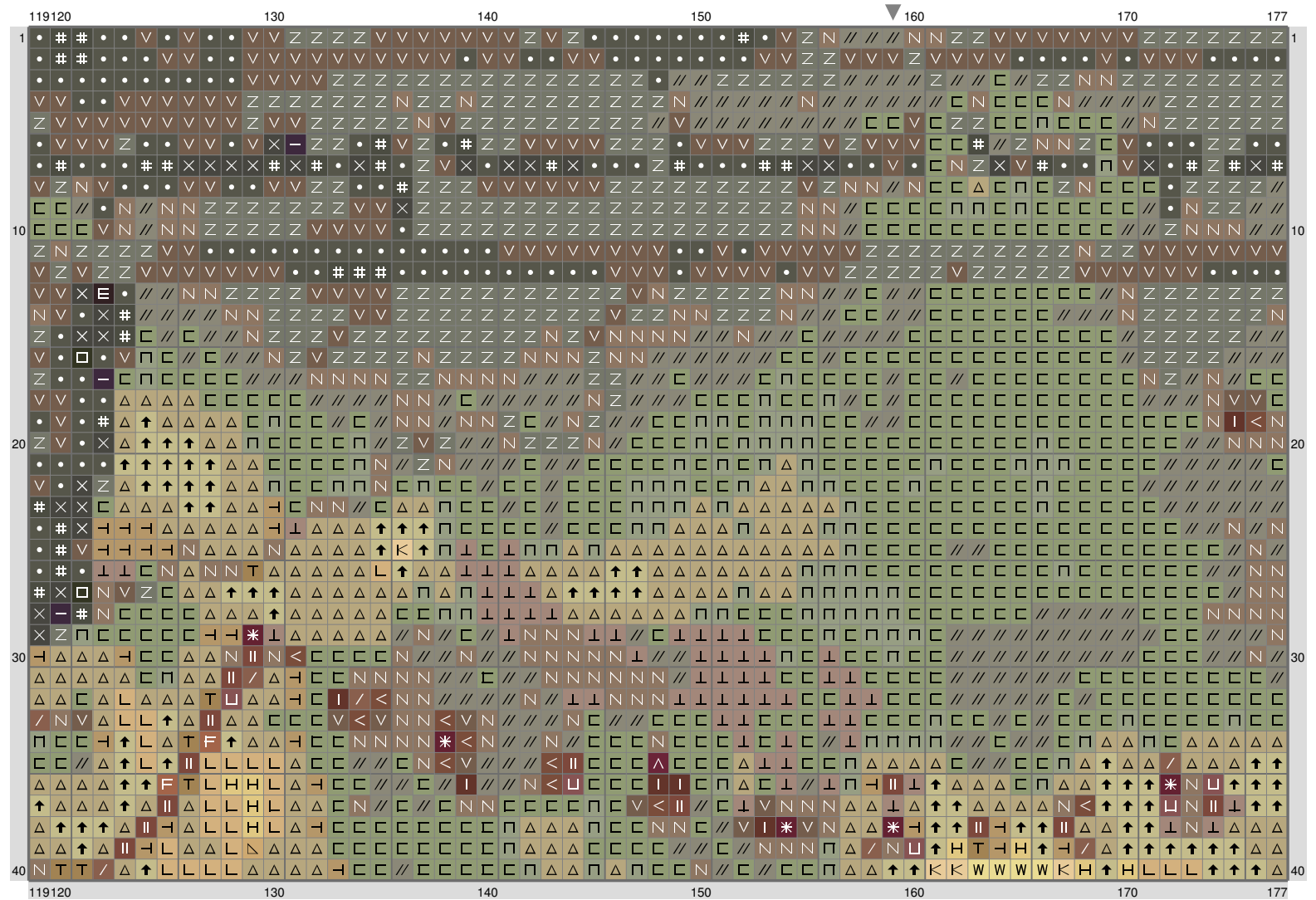
## Middle Earth Map



# Middle Earth Map

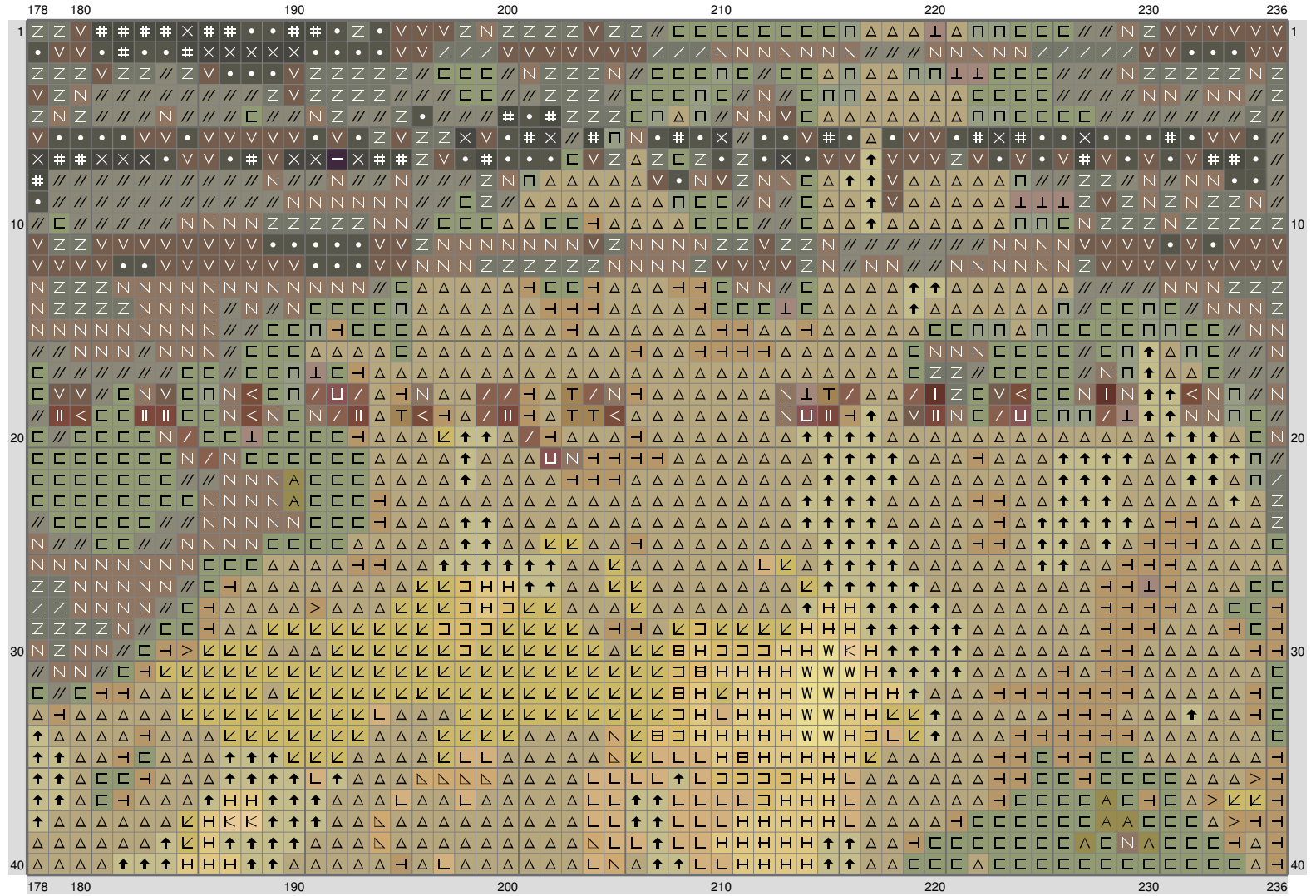


# Middle Earth Map

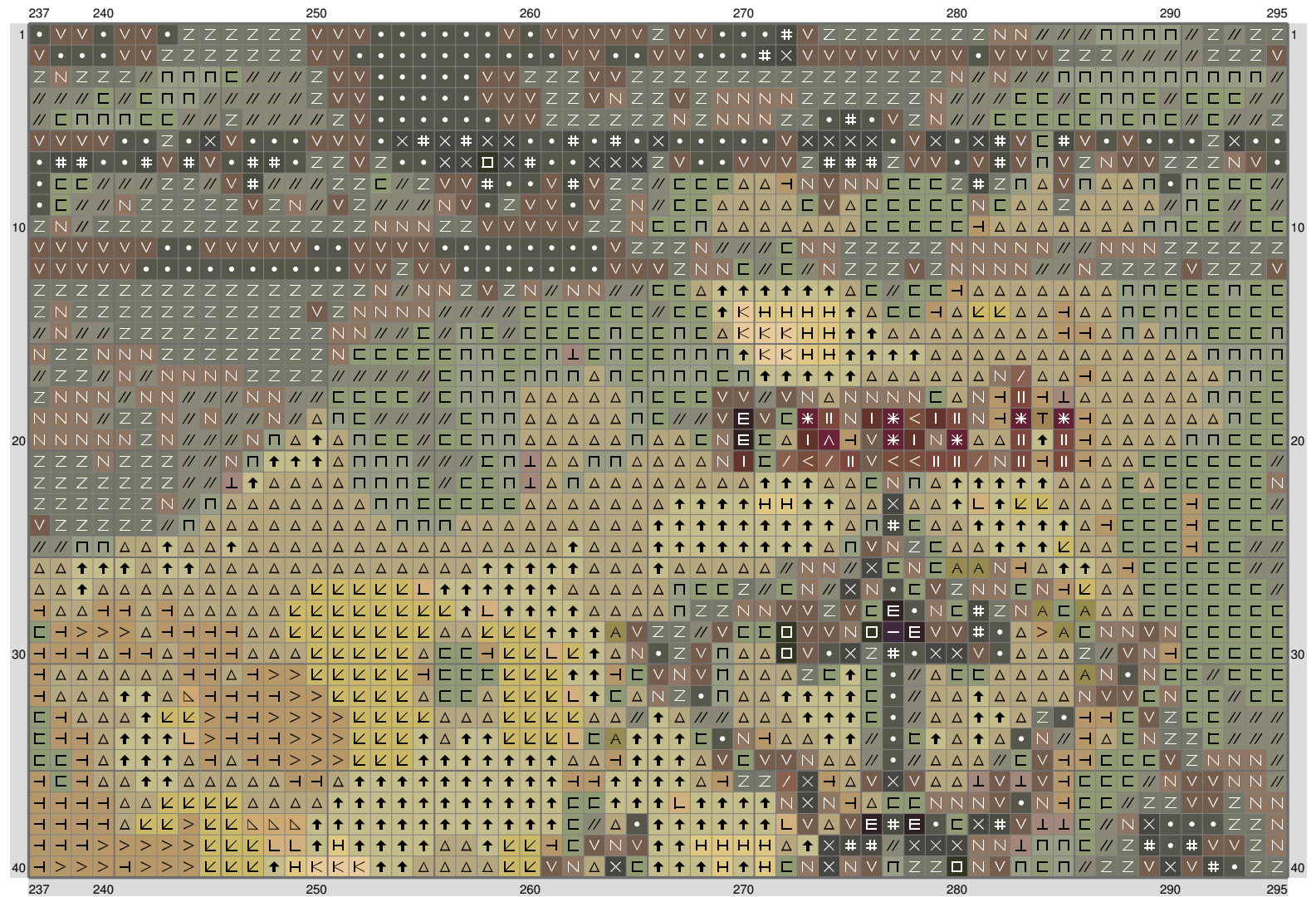




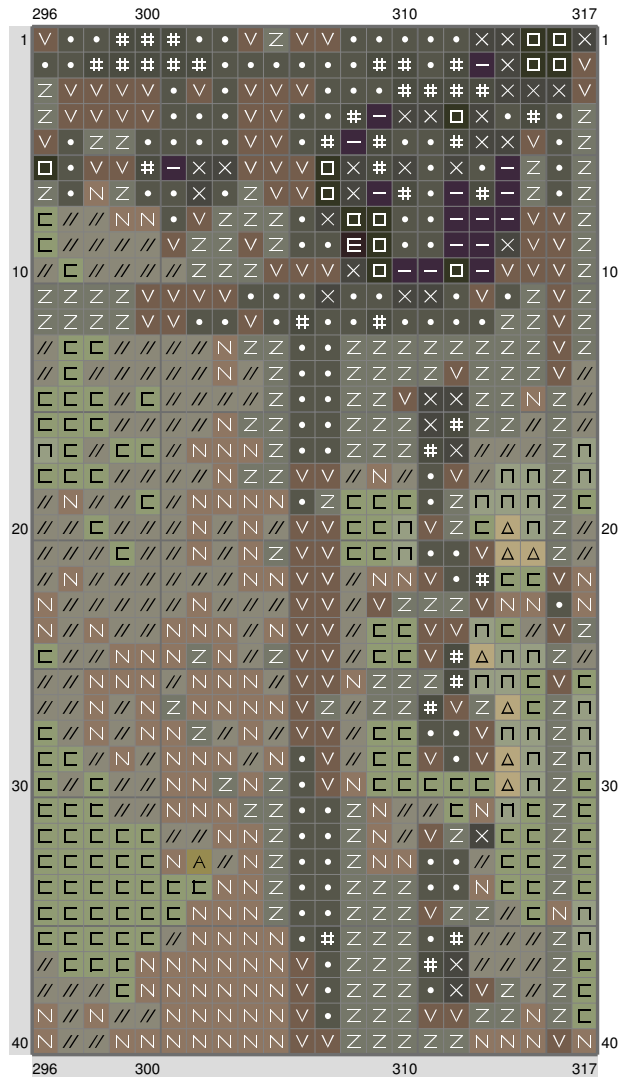
# Middle Earth Map



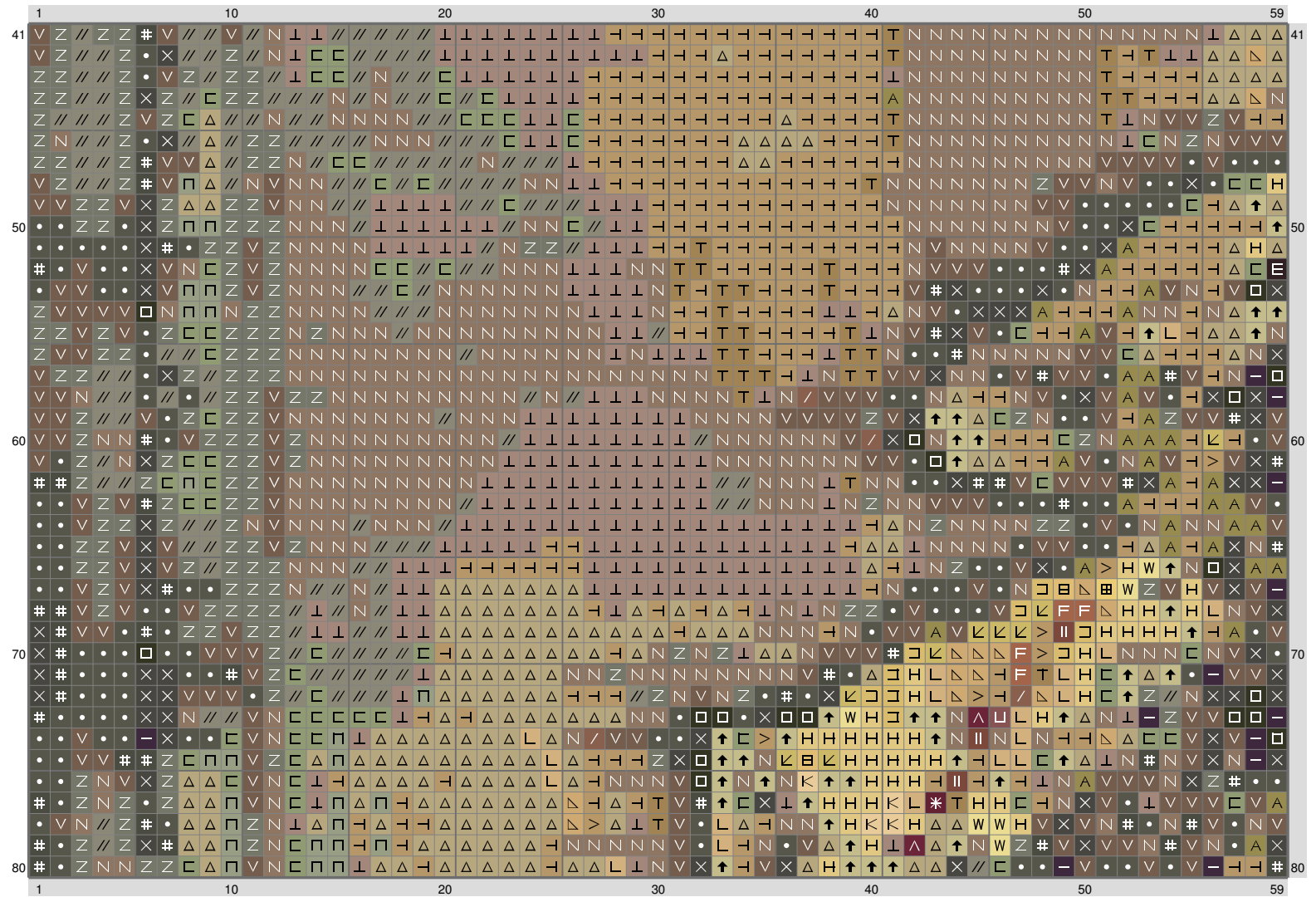
## Middle Earth Map



# Middle Earth Map



## Middle Earth Map

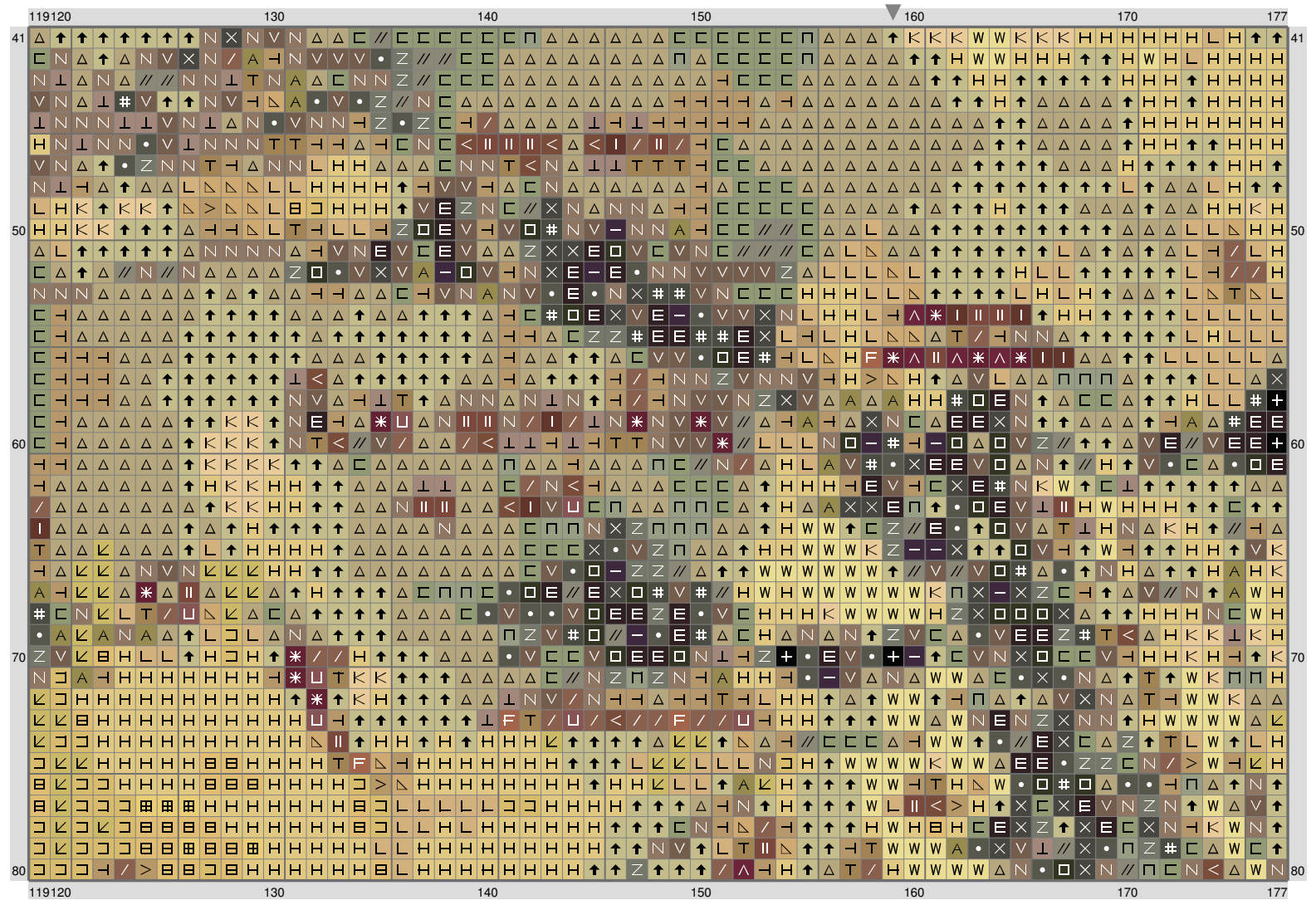


# Middle Earth Map

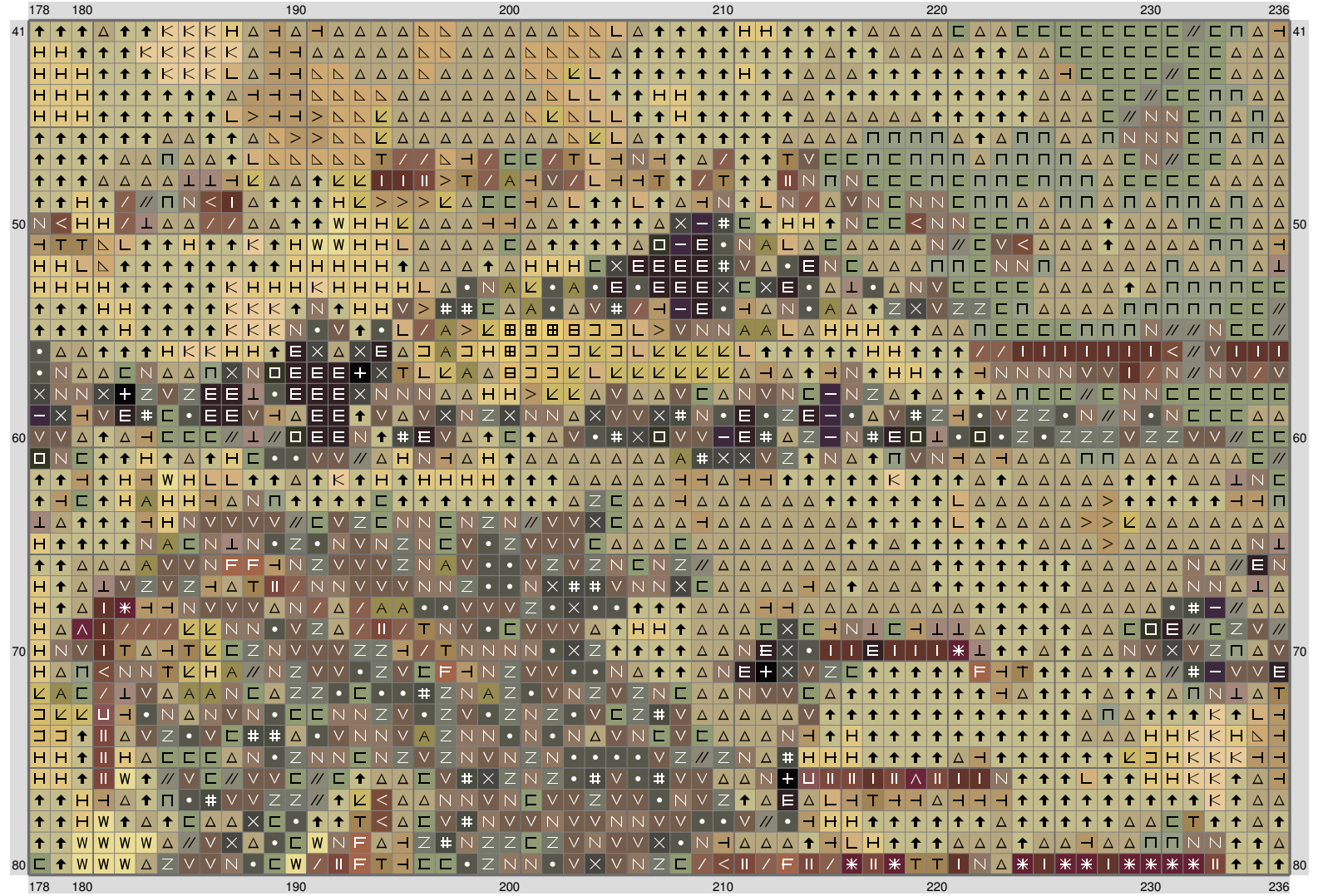




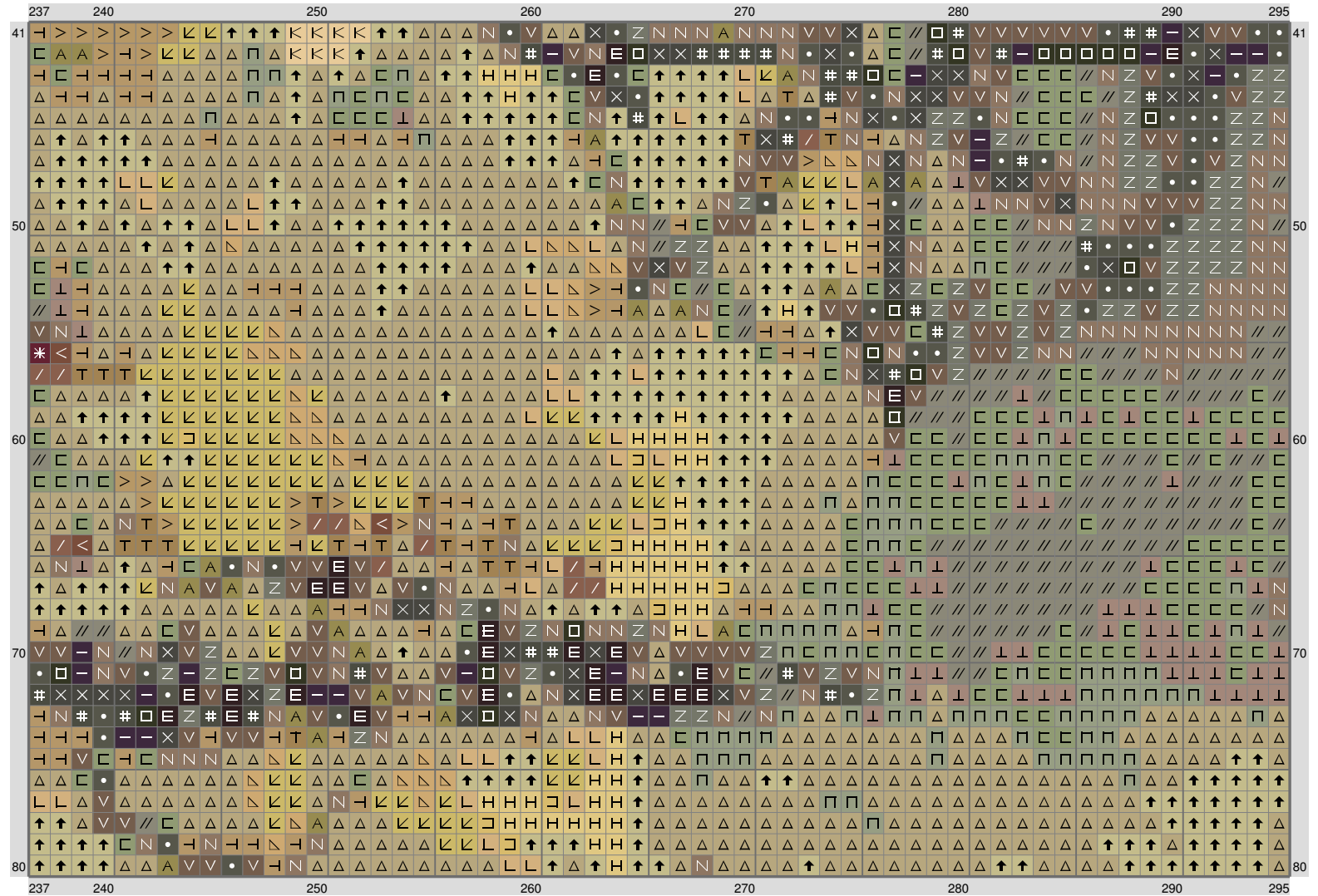
# Middle Earth Map



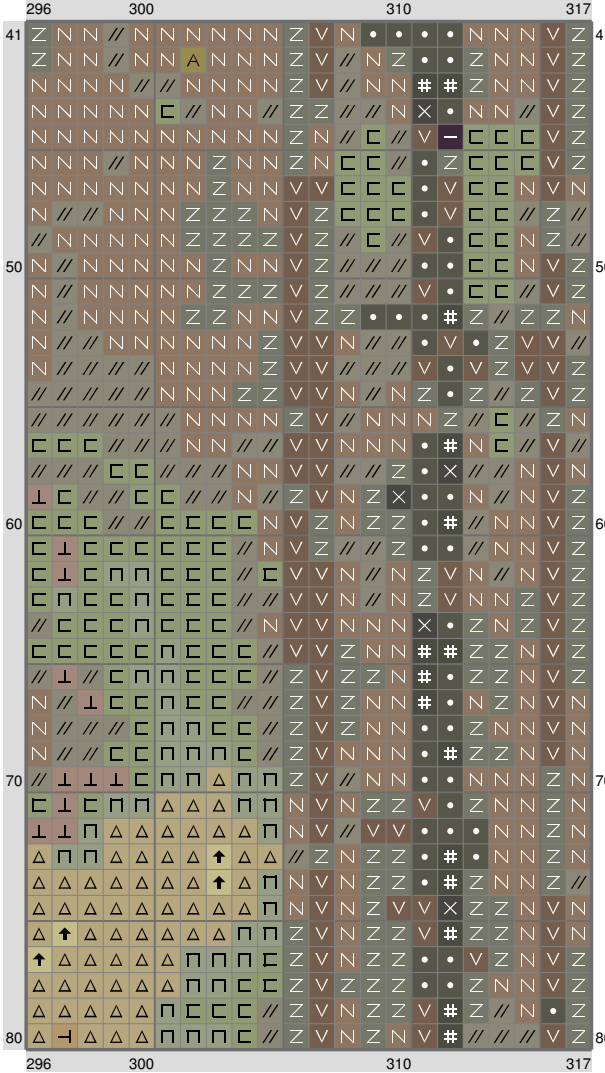
# Middle Earth Map



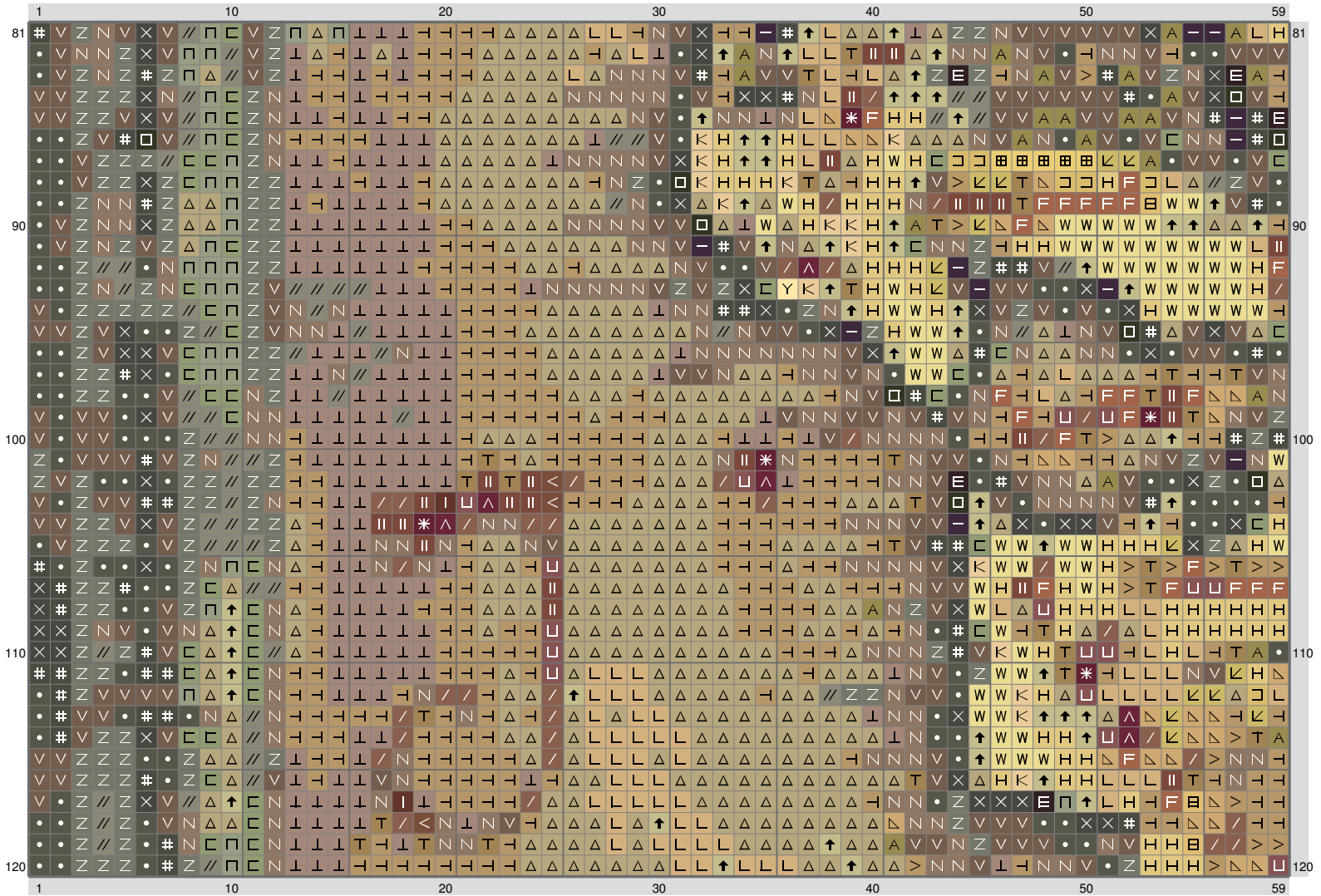
# Middle Earth Map



## Middle Earth Map

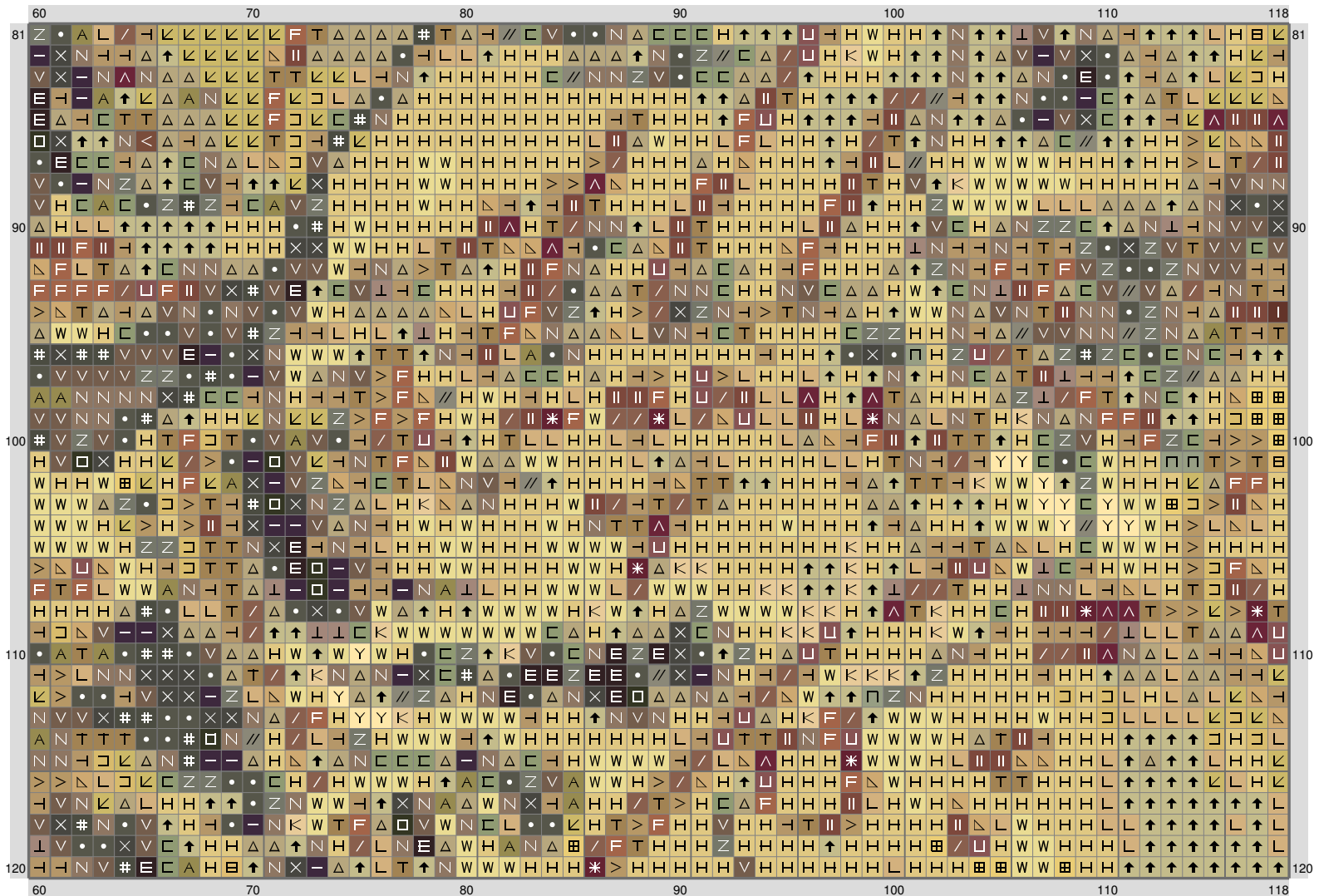


## Middle Earth Map

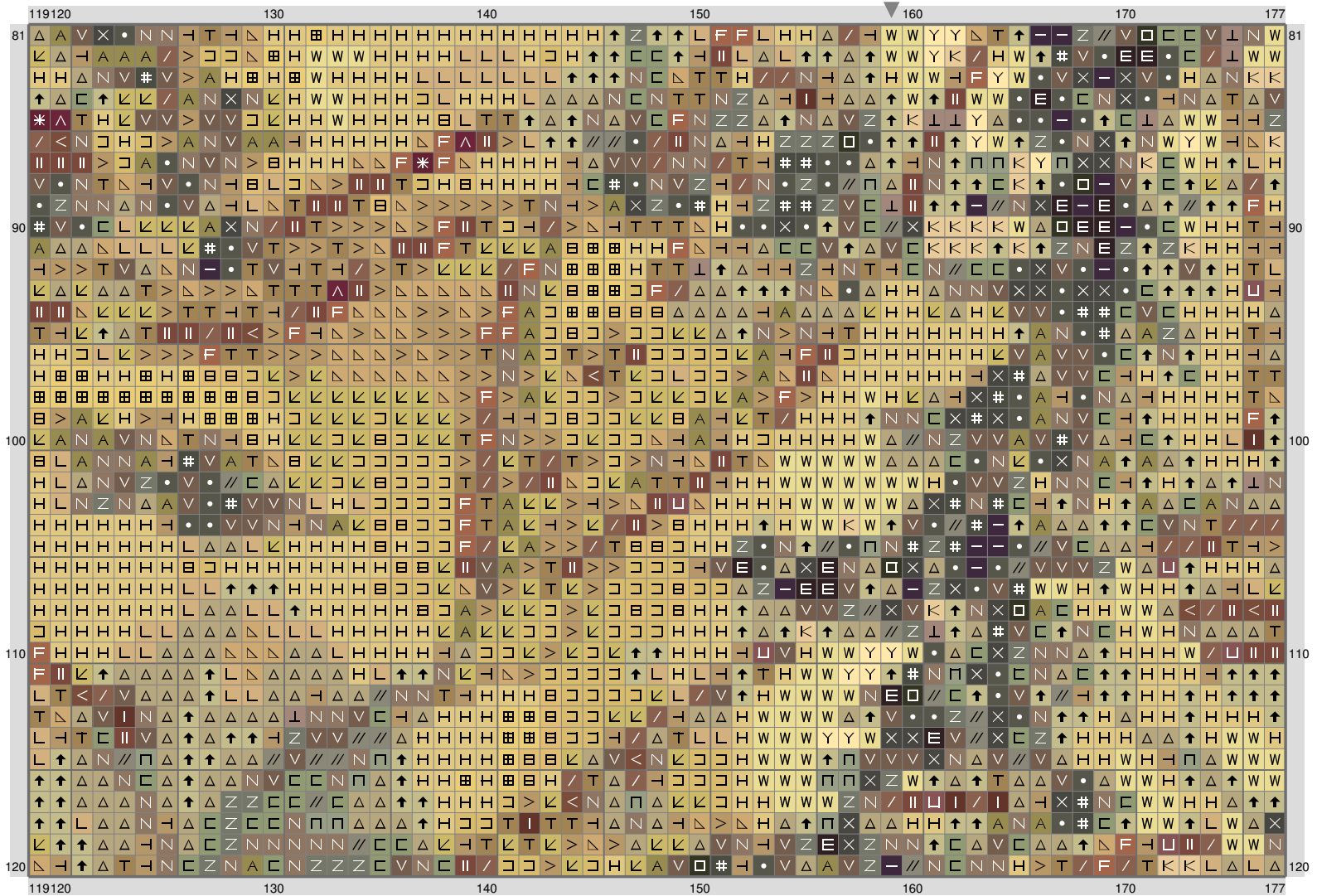




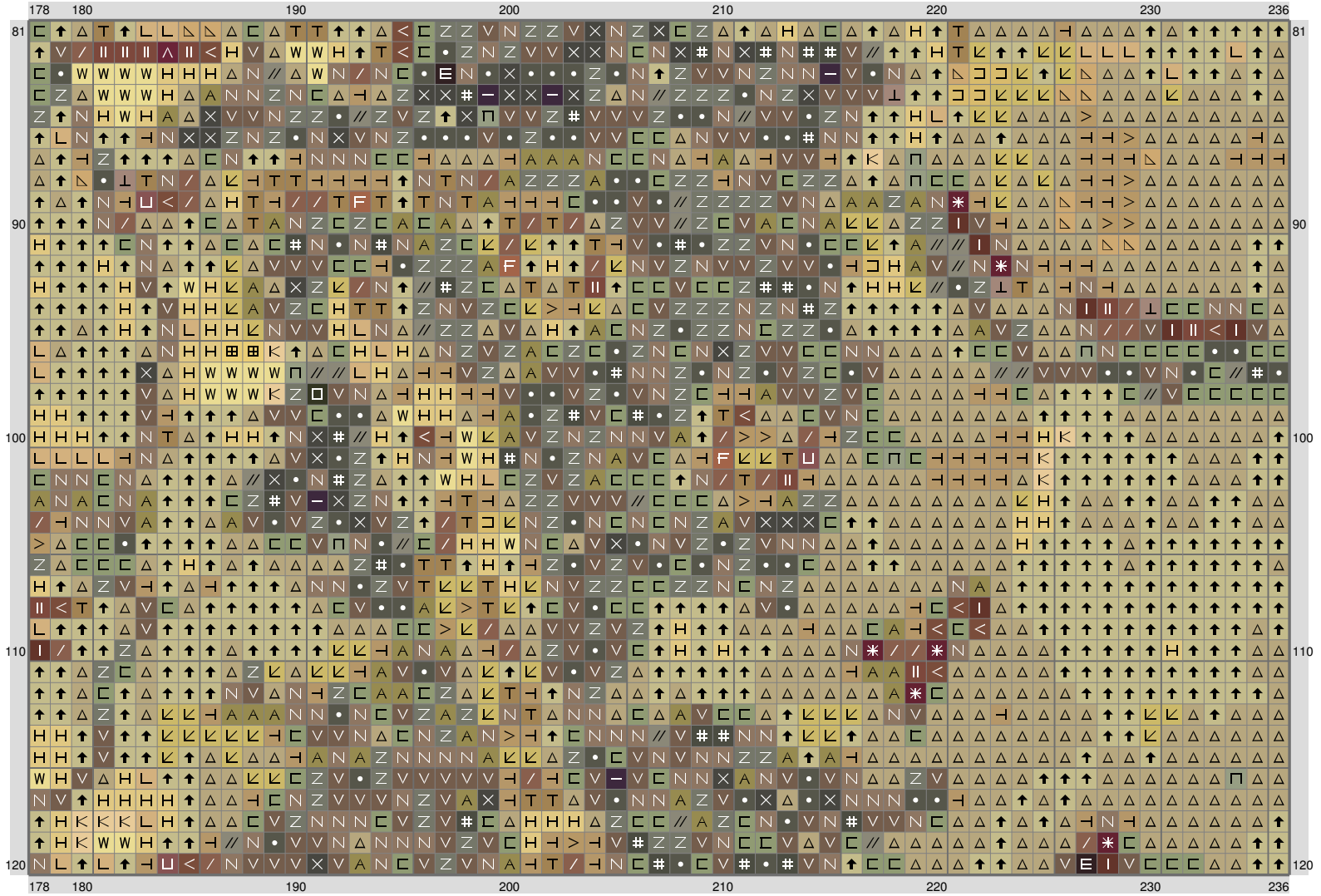
## Middle Earth Map



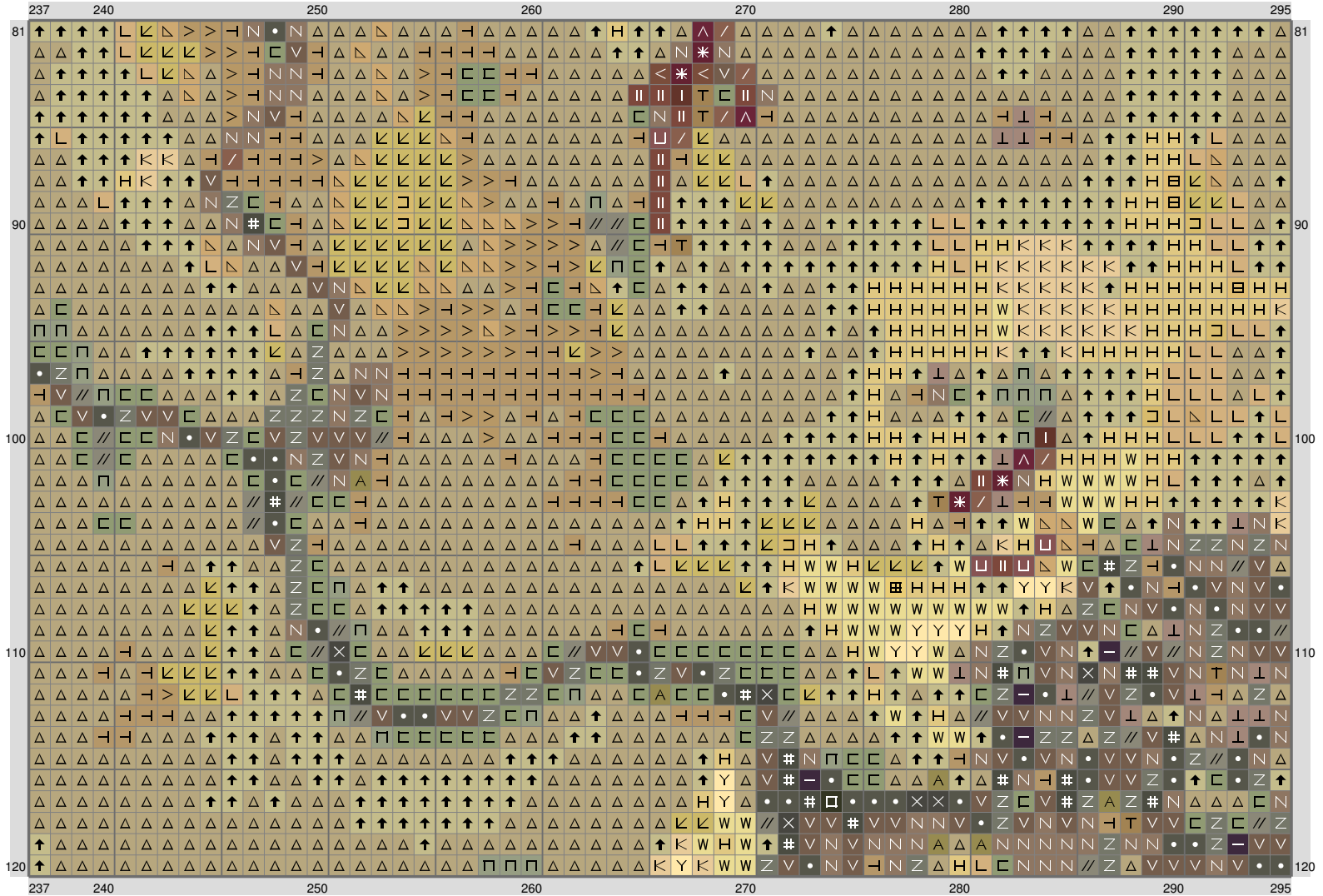
# Middle Earth Map



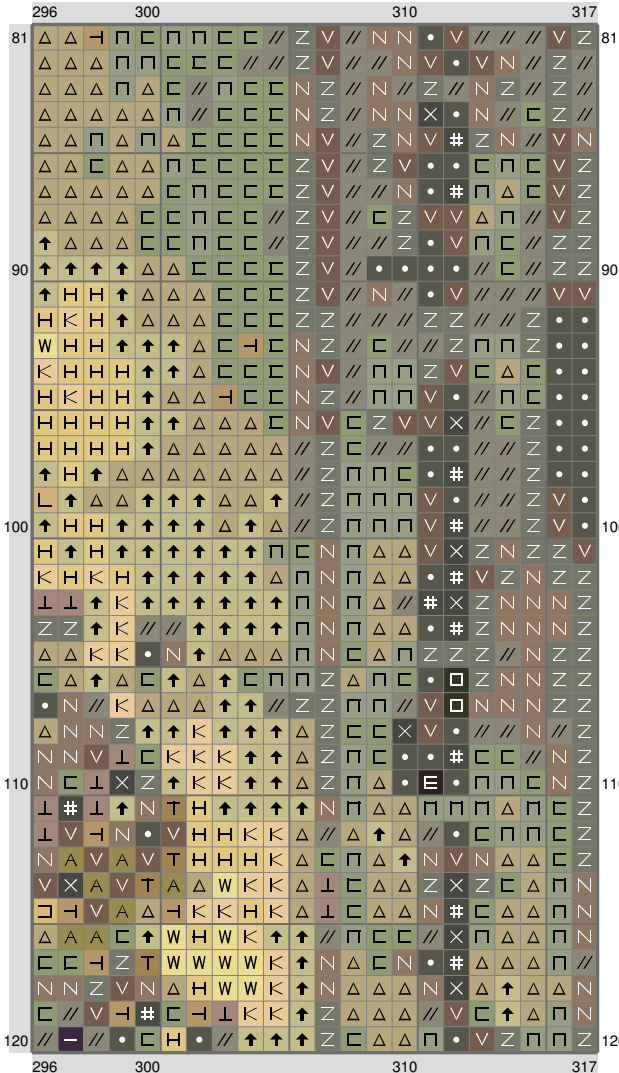
## Middle Earth Map



# Middle Earth Map

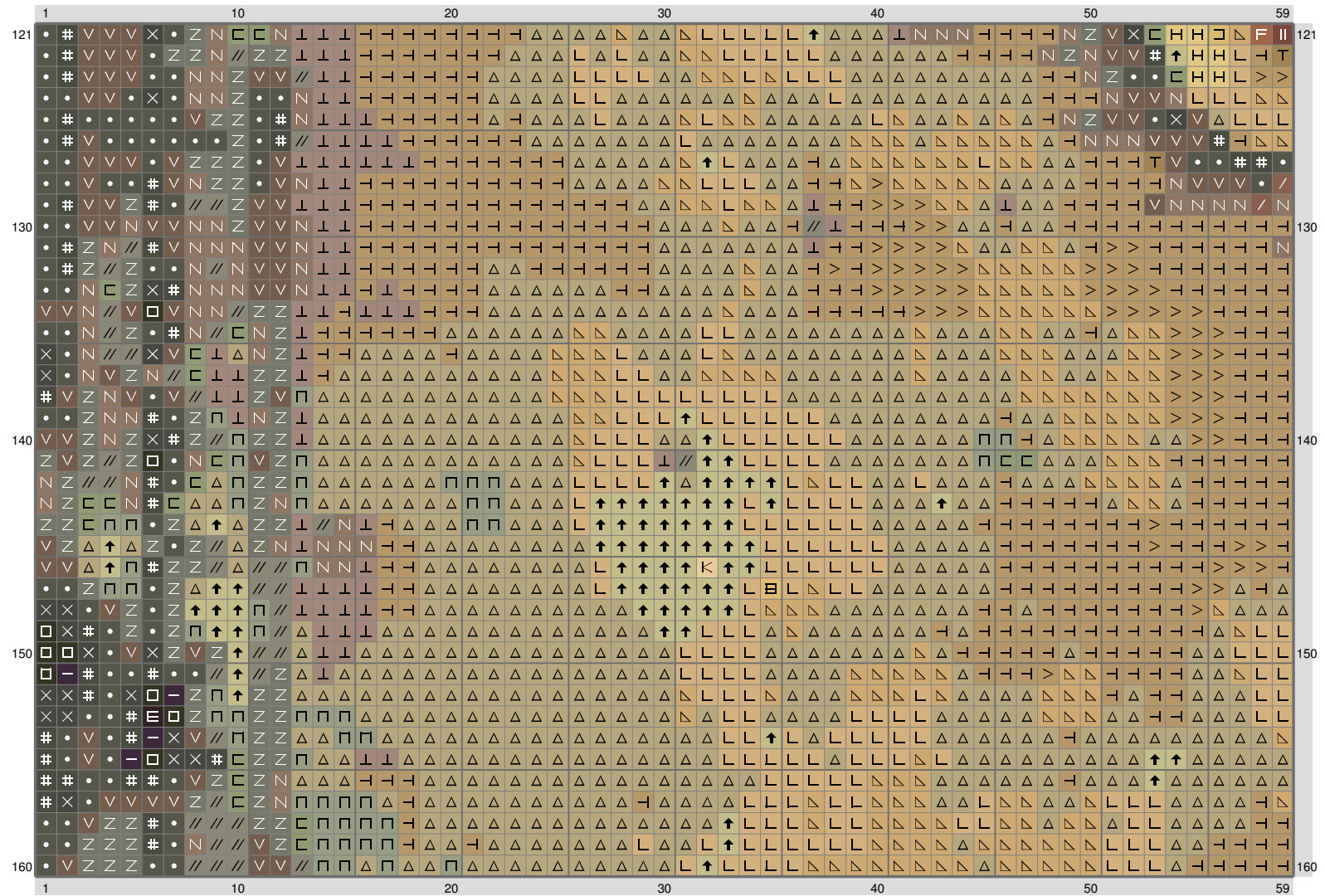


## Middle Earth Map

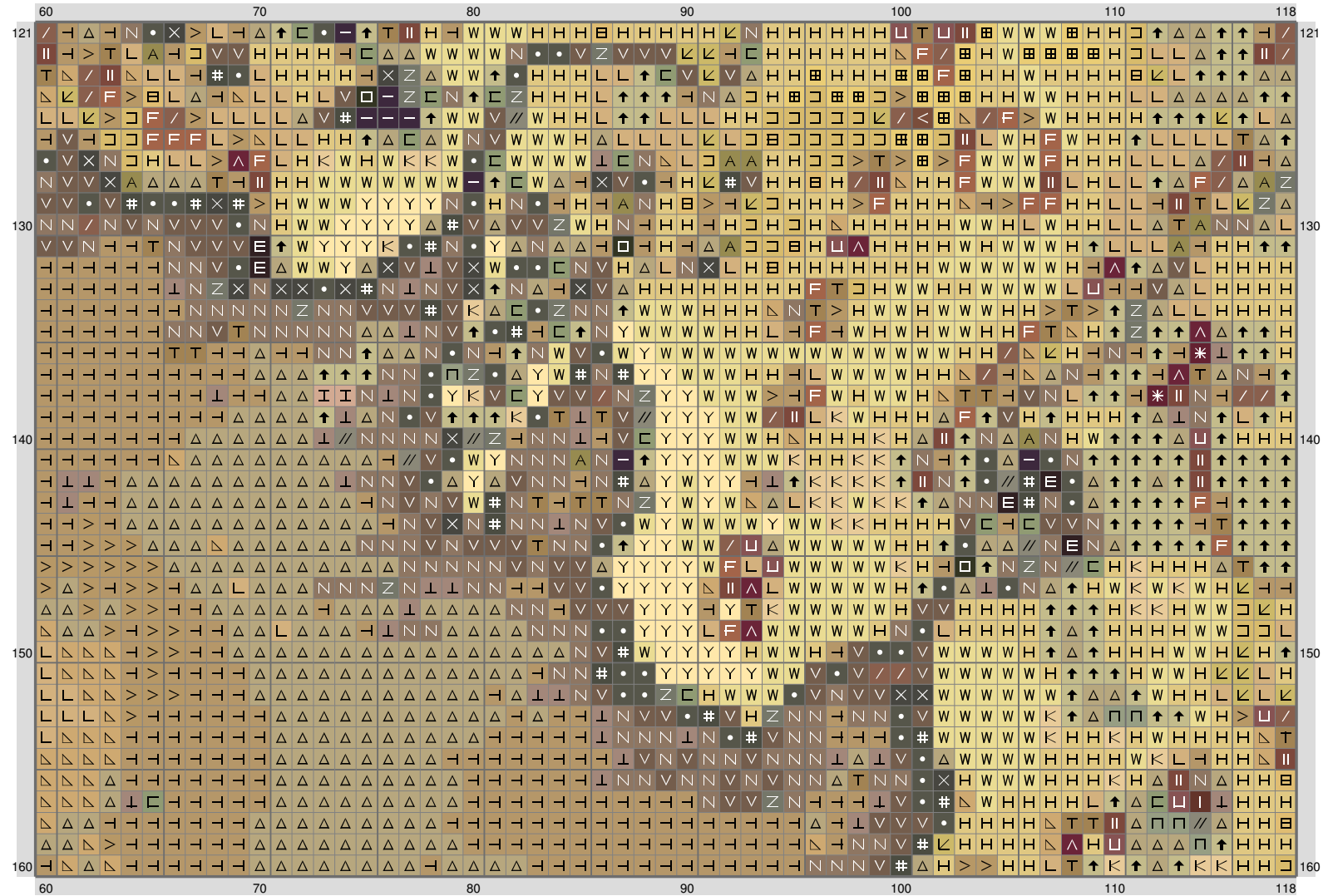




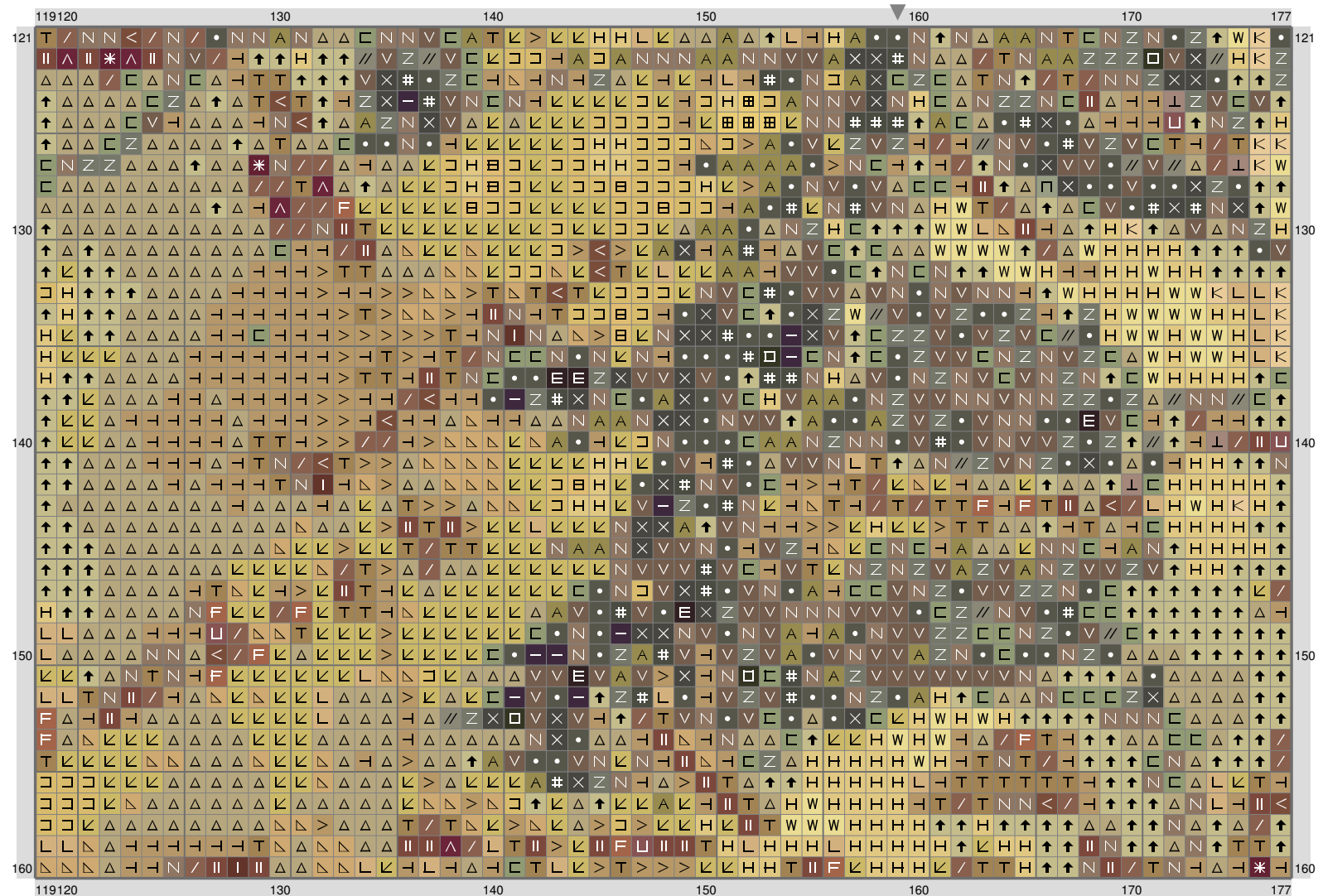
# Middle Earth Map



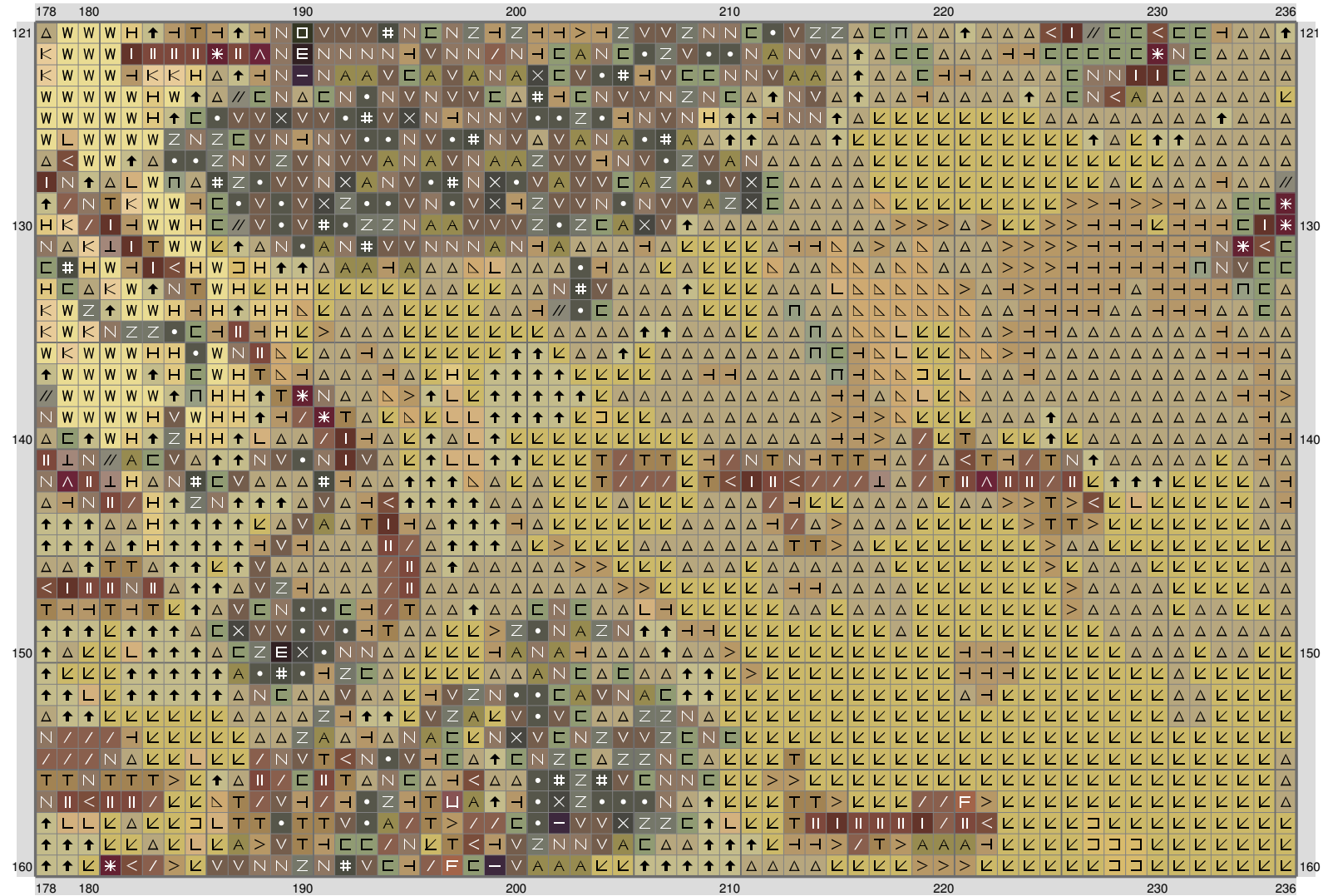
# Middle Earth Map



# Middle Earth Map



# Middle Earth Map

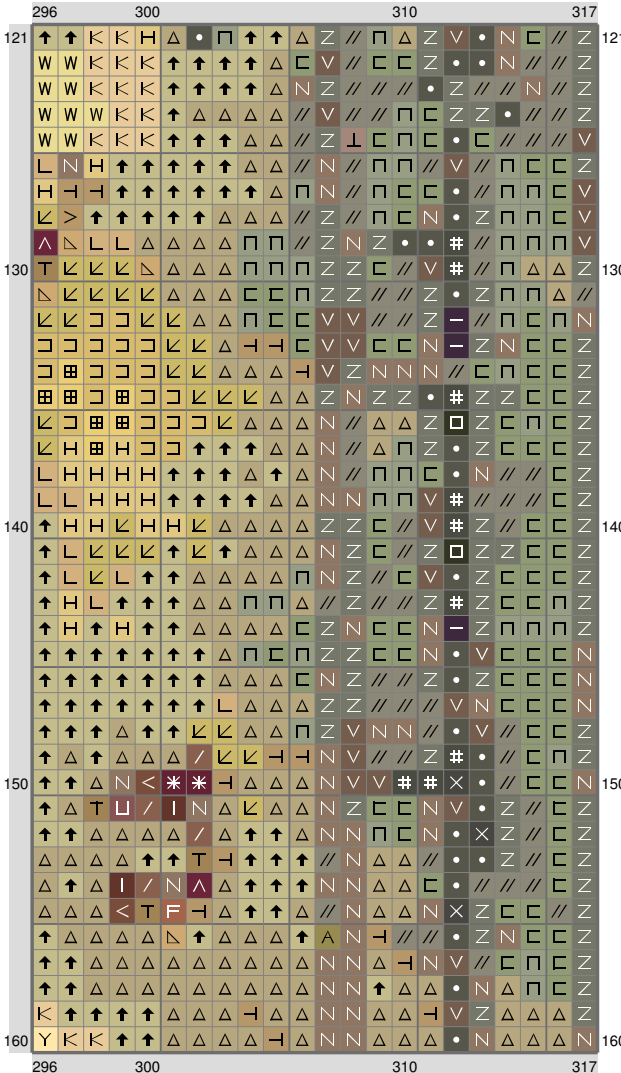


## Middle Earth Map

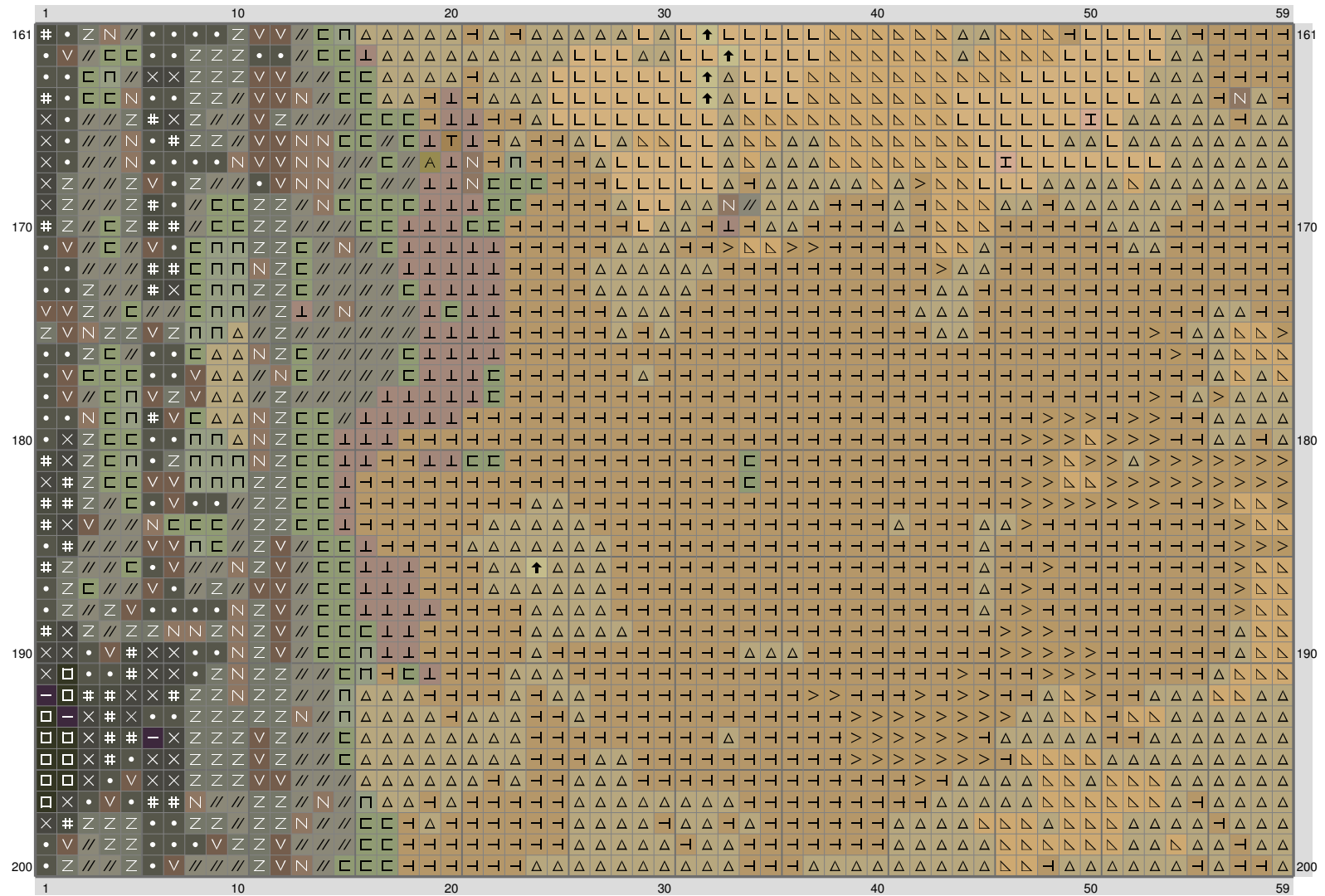
[illegible]



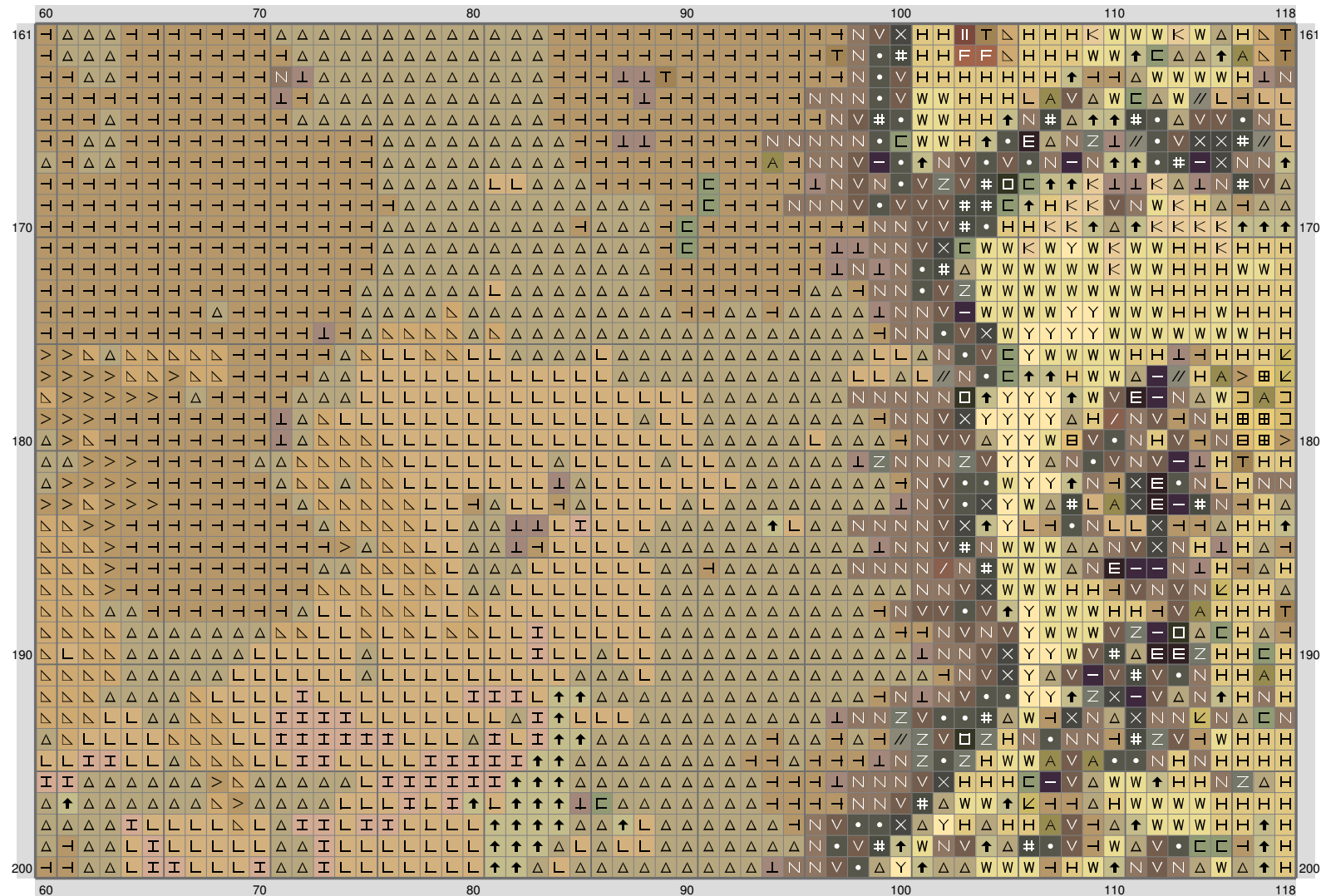
## Middle Earth Map



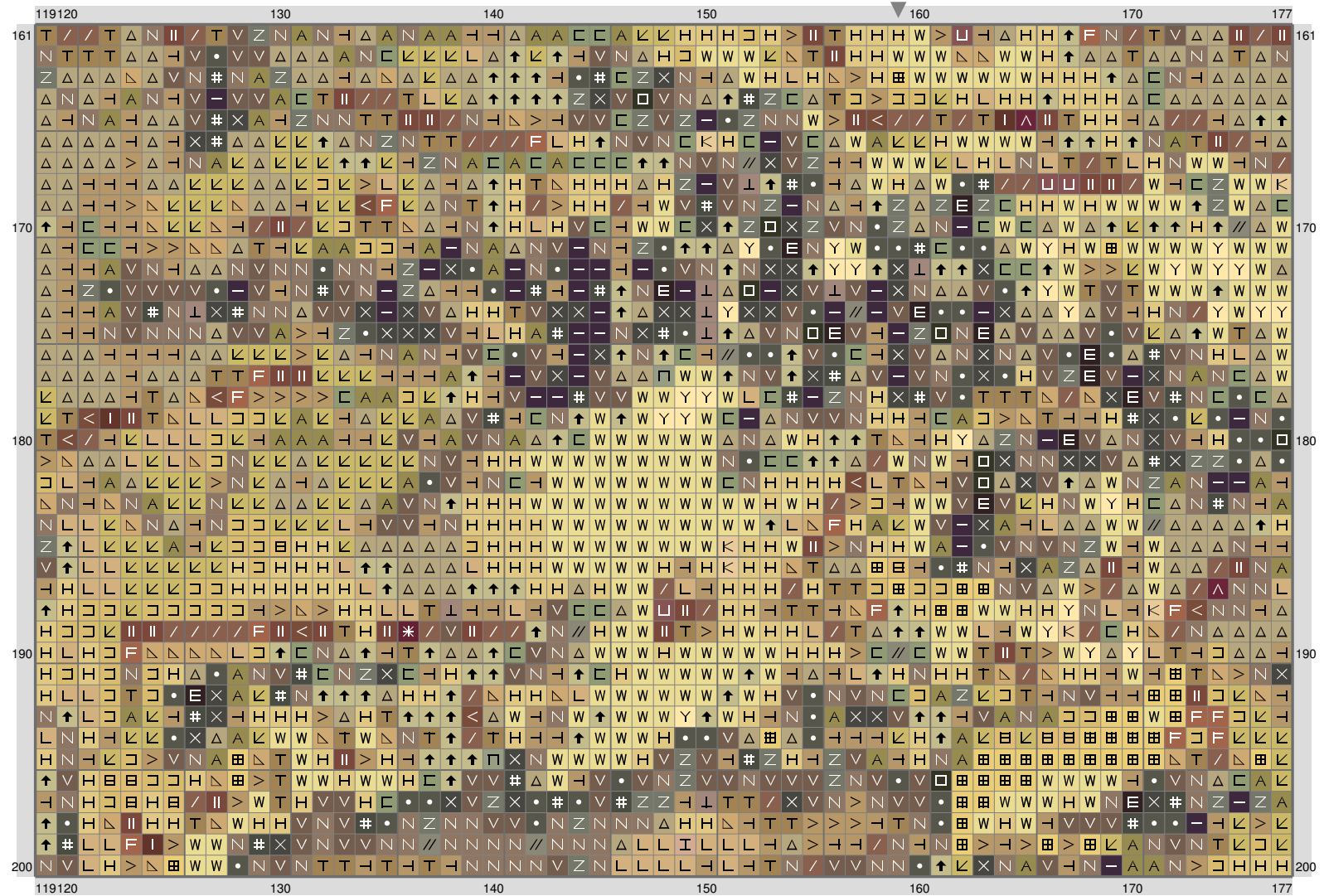
## Middle Earth Map



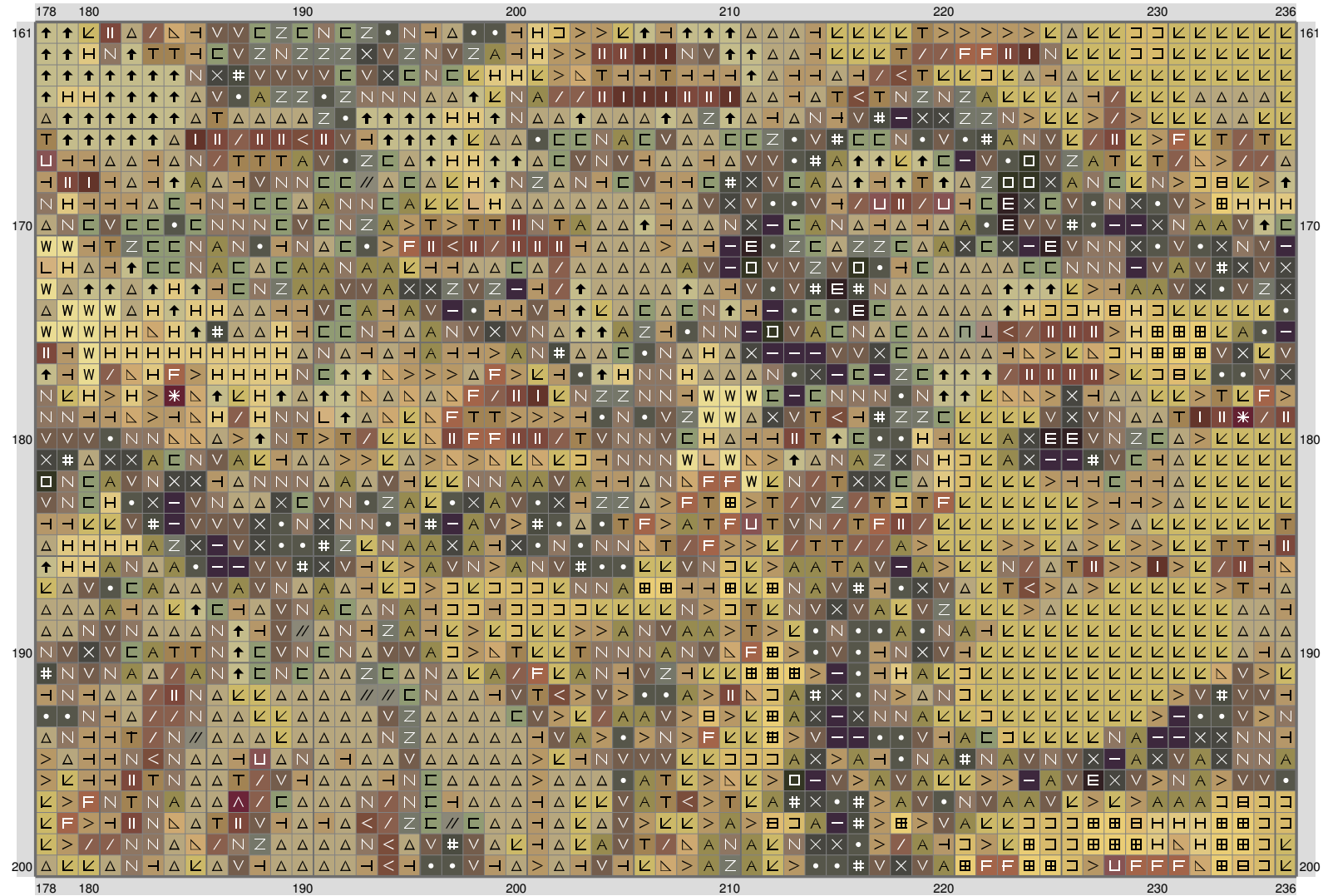
## Middle Earth Map



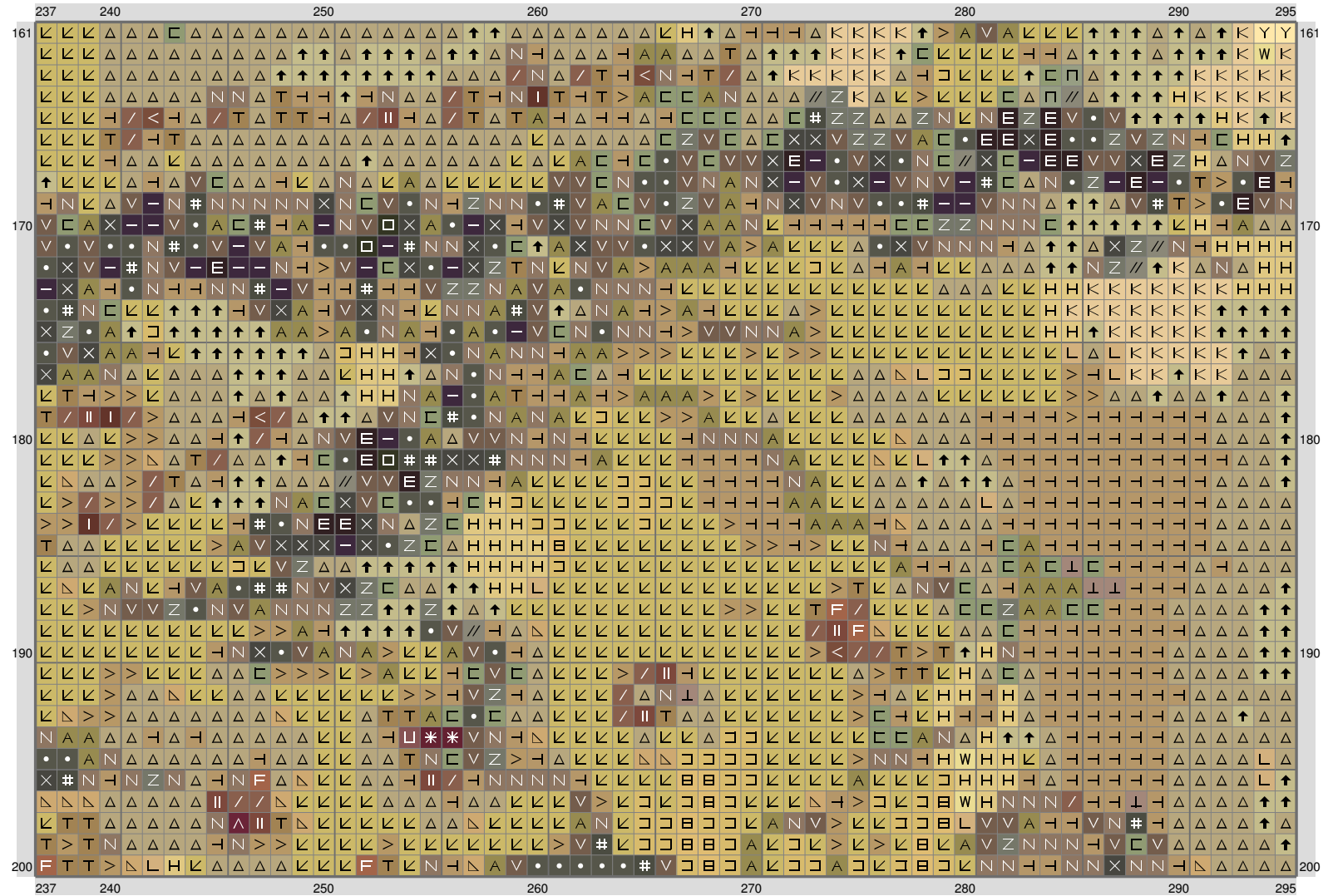
# Middle Earth Map



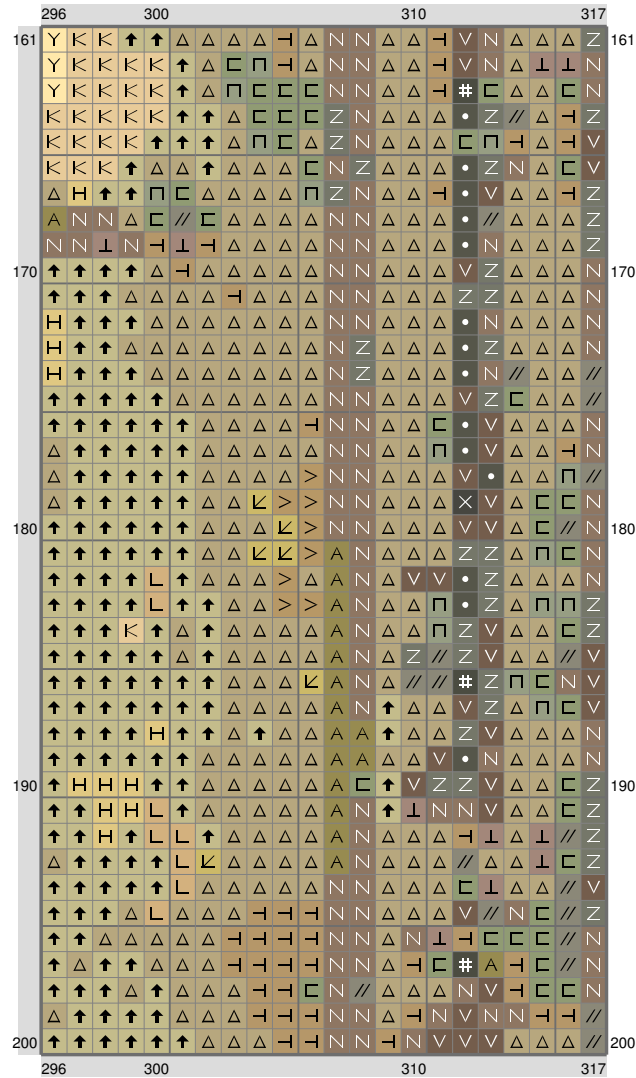
# Middle Earth Map



# Middle Earth Map



## Middle Earth Map

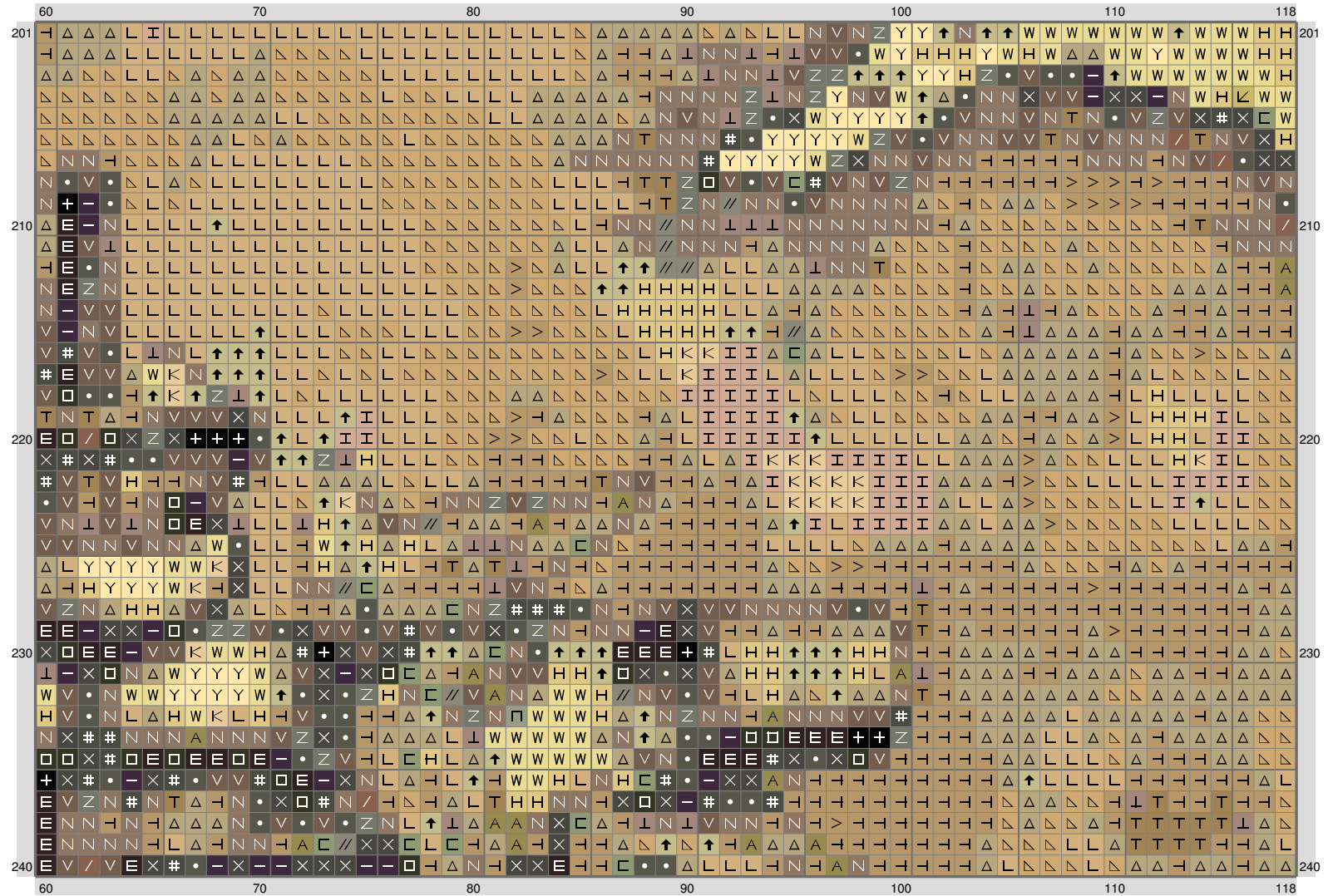


## Middle Earth Map

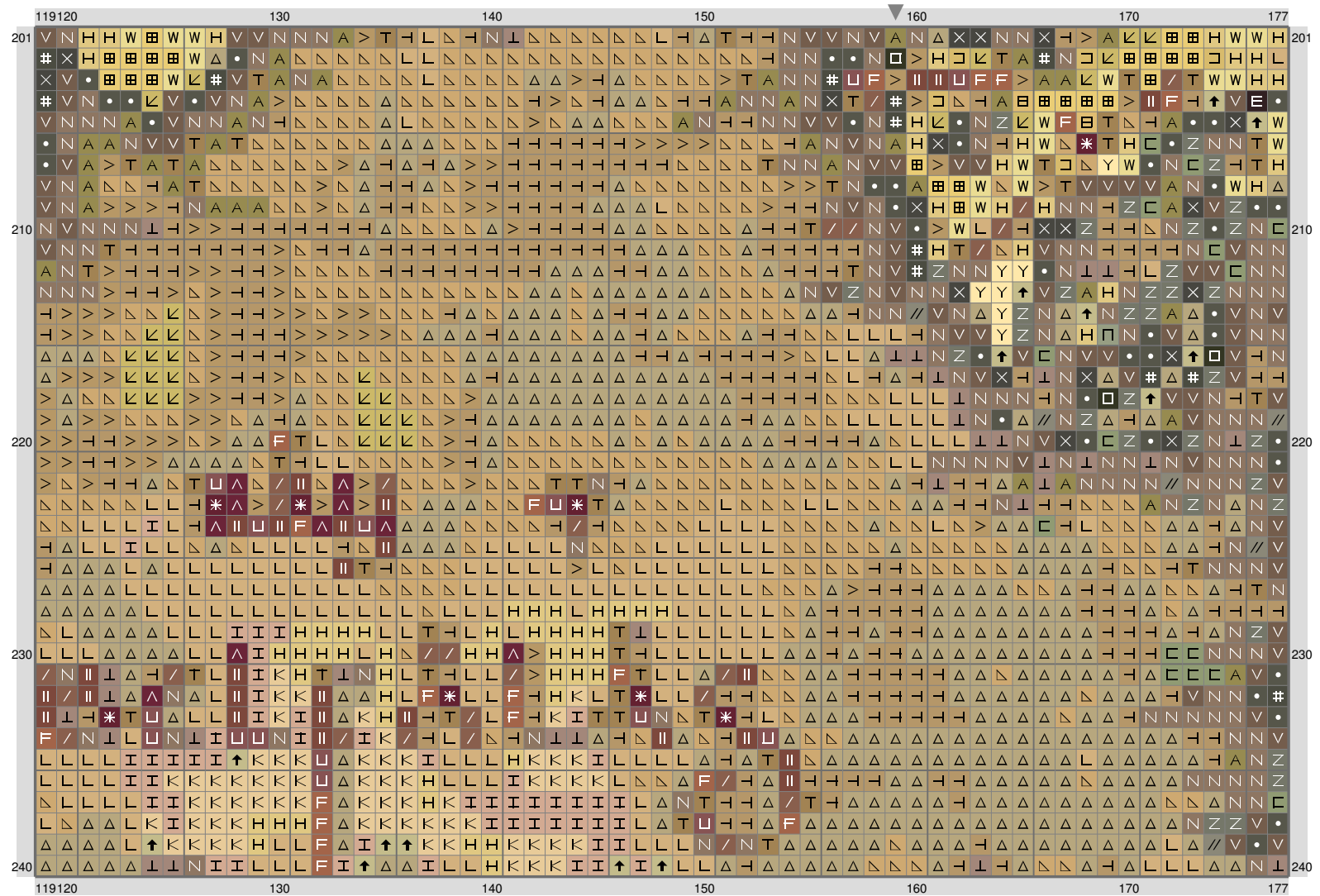
[illegible]



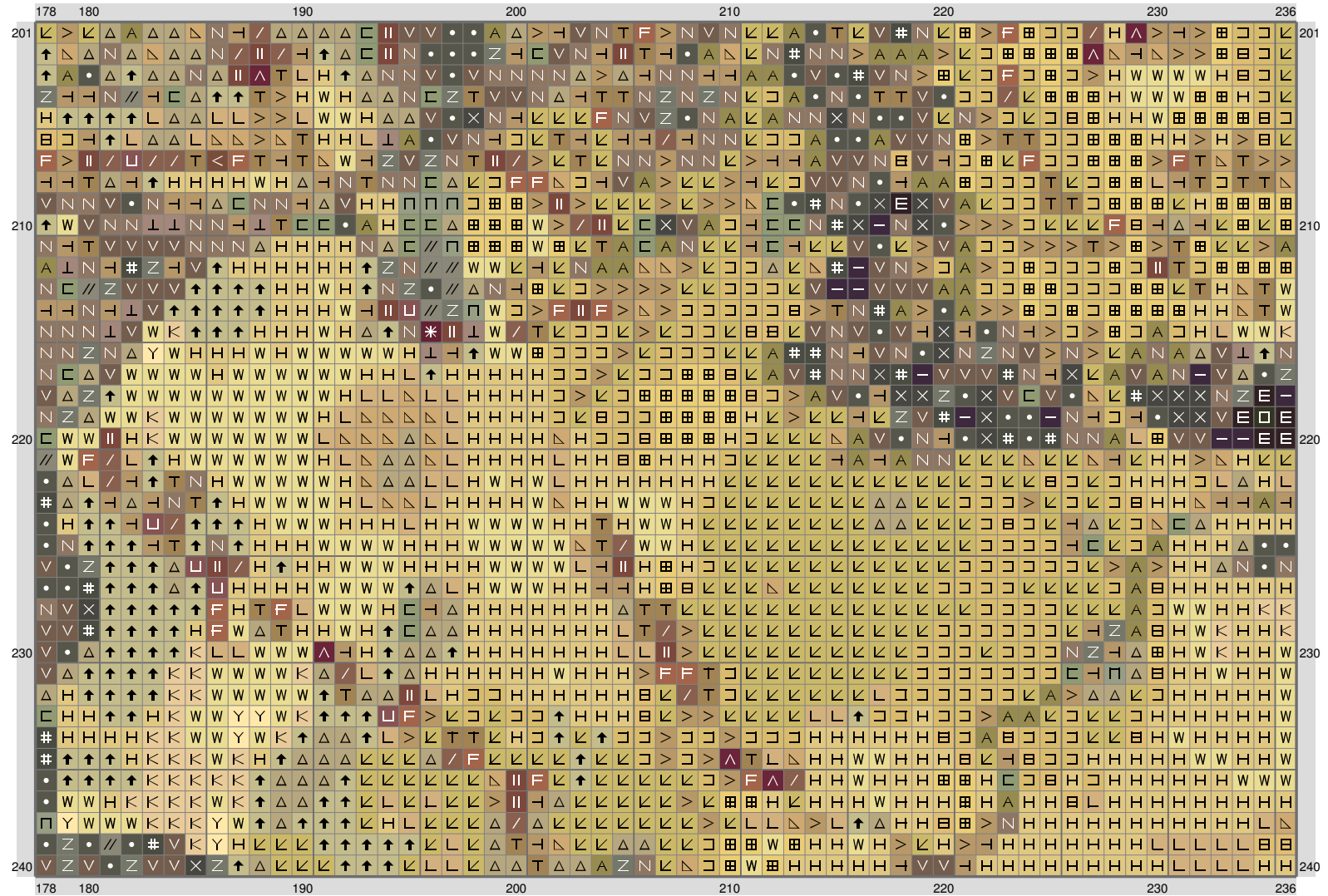
# Middle Earth Map



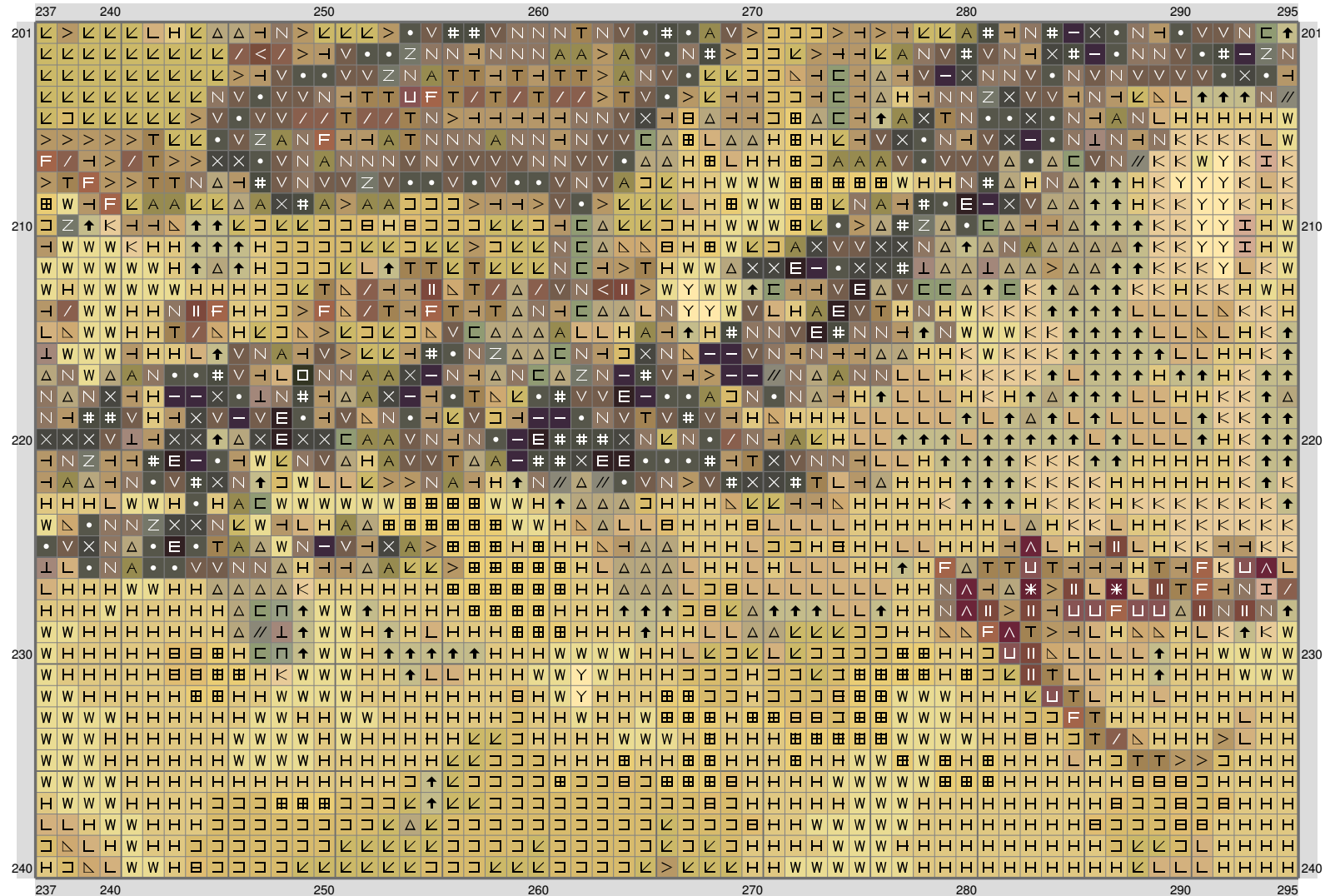
## Middle Earth Map



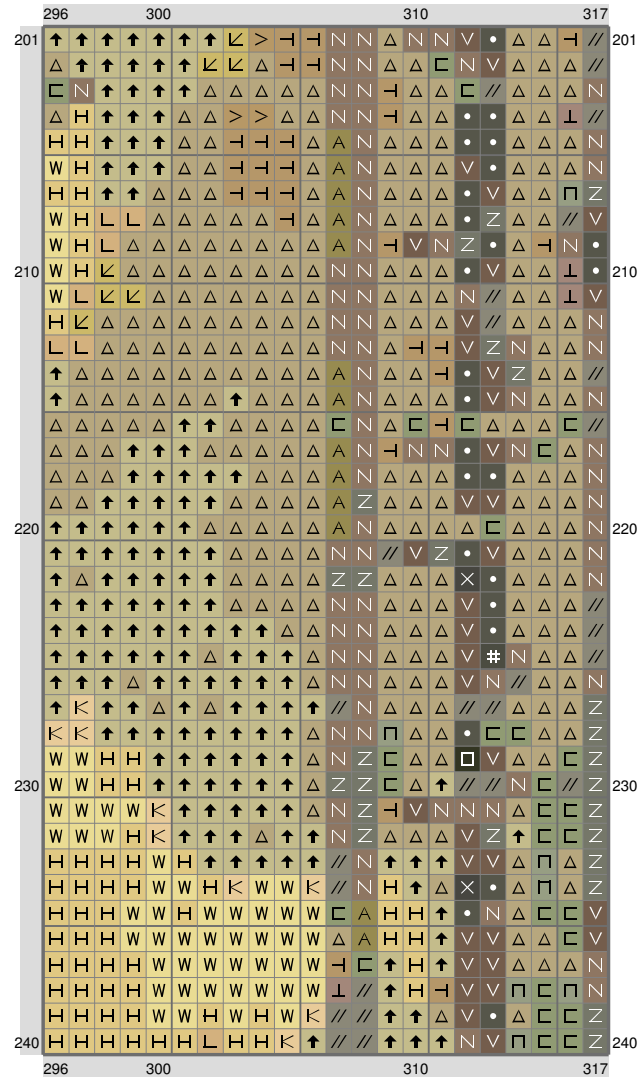
# Middle Earth Map



## Middle Earth Map



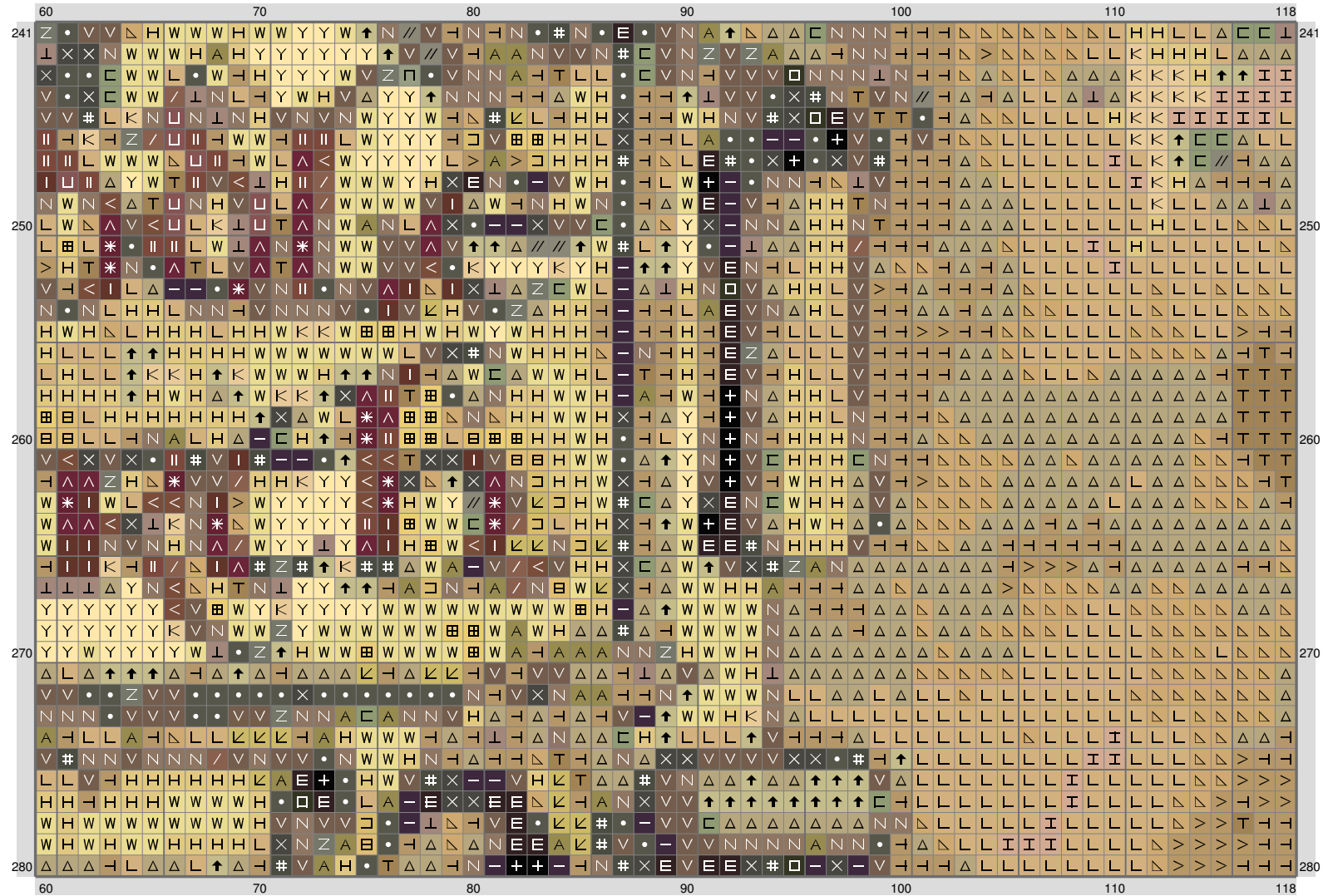
## Middle Earth Map



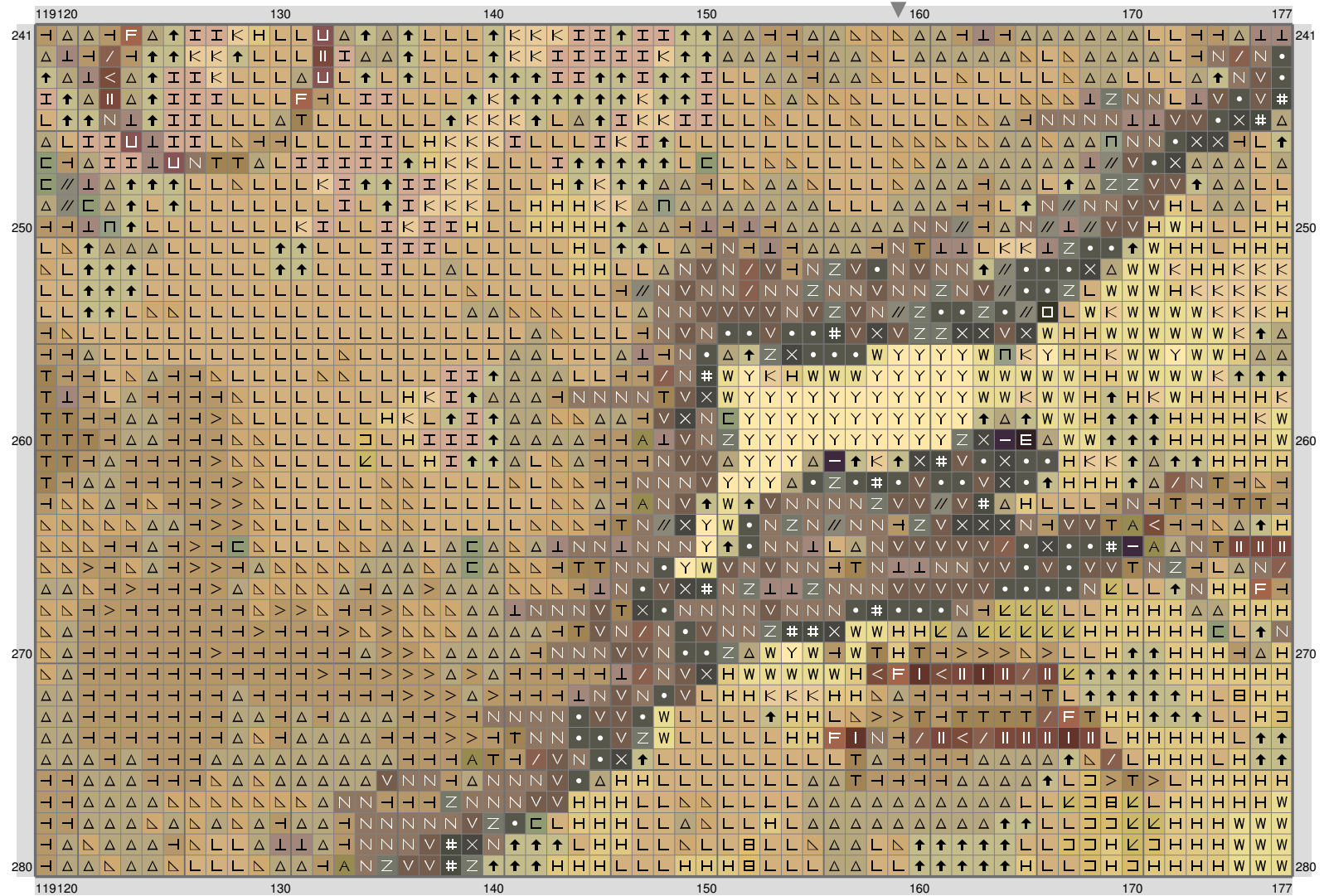
## Middle Earth Map

[illegible]

# Middle Earth Map



## Middle Earth Map





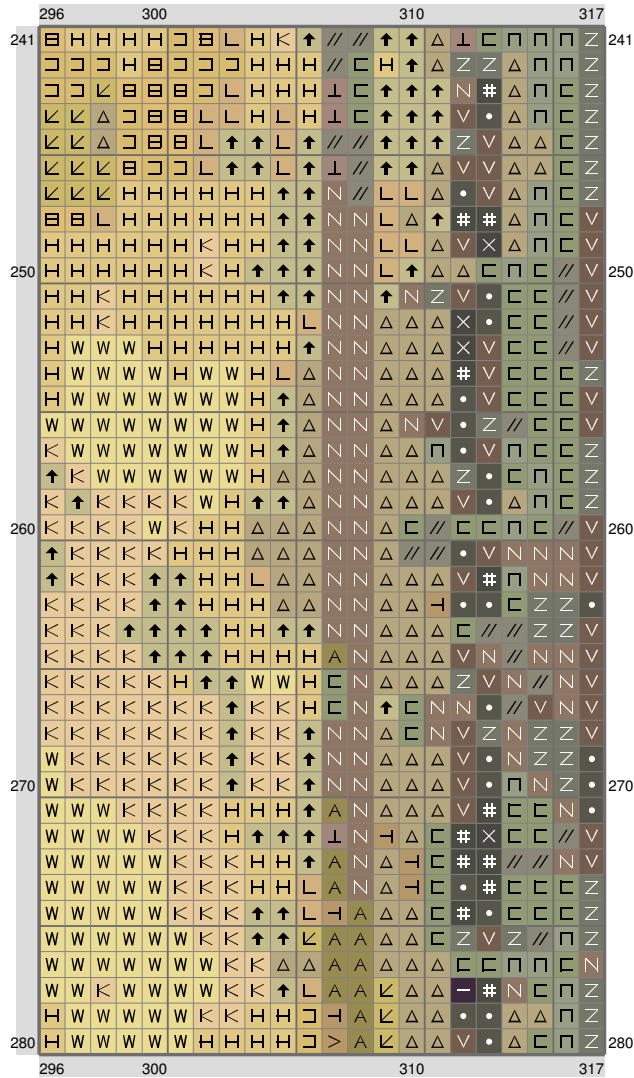
## Middle Earth Map

[illegible]

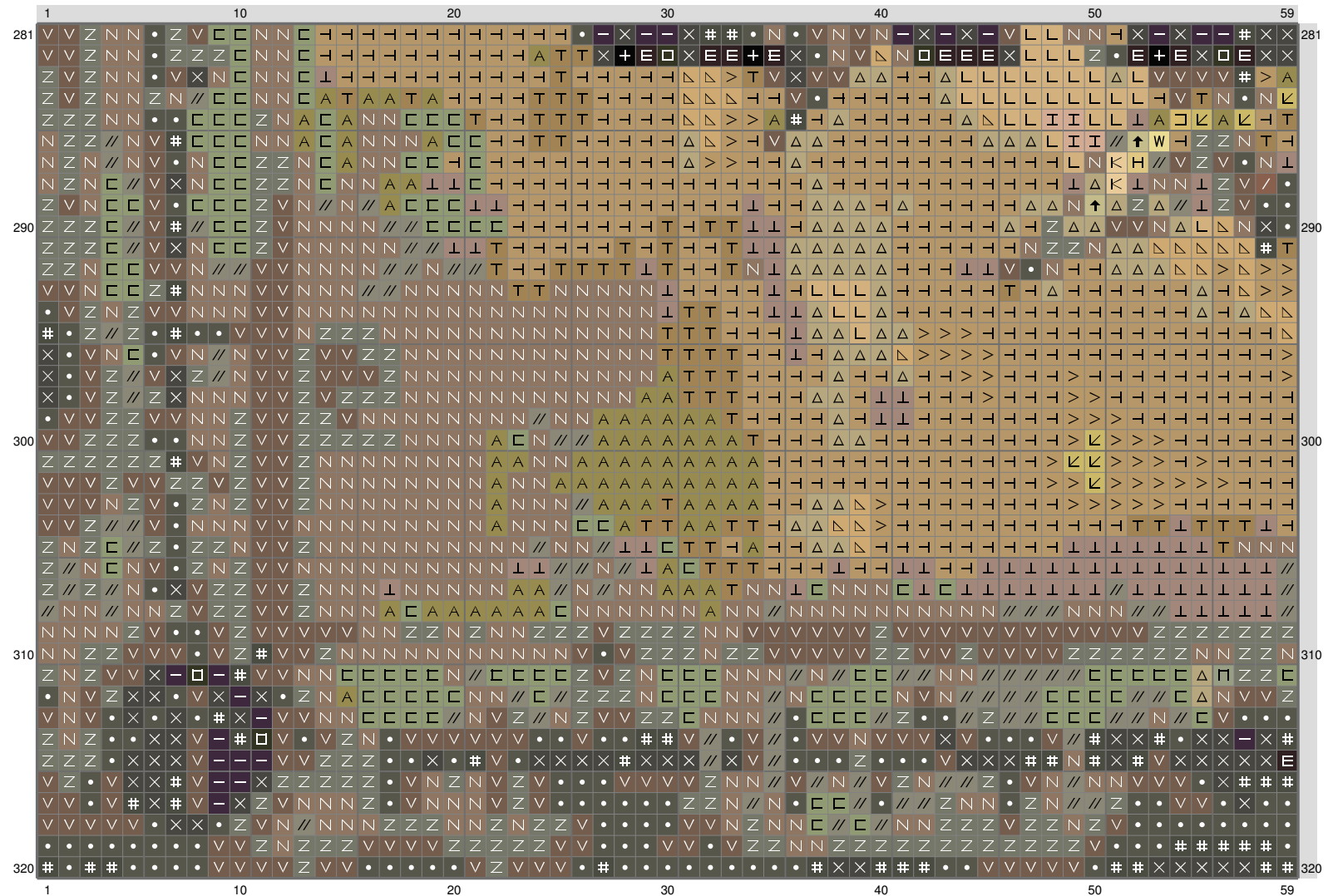
## Middle Earth Map

[illegible]

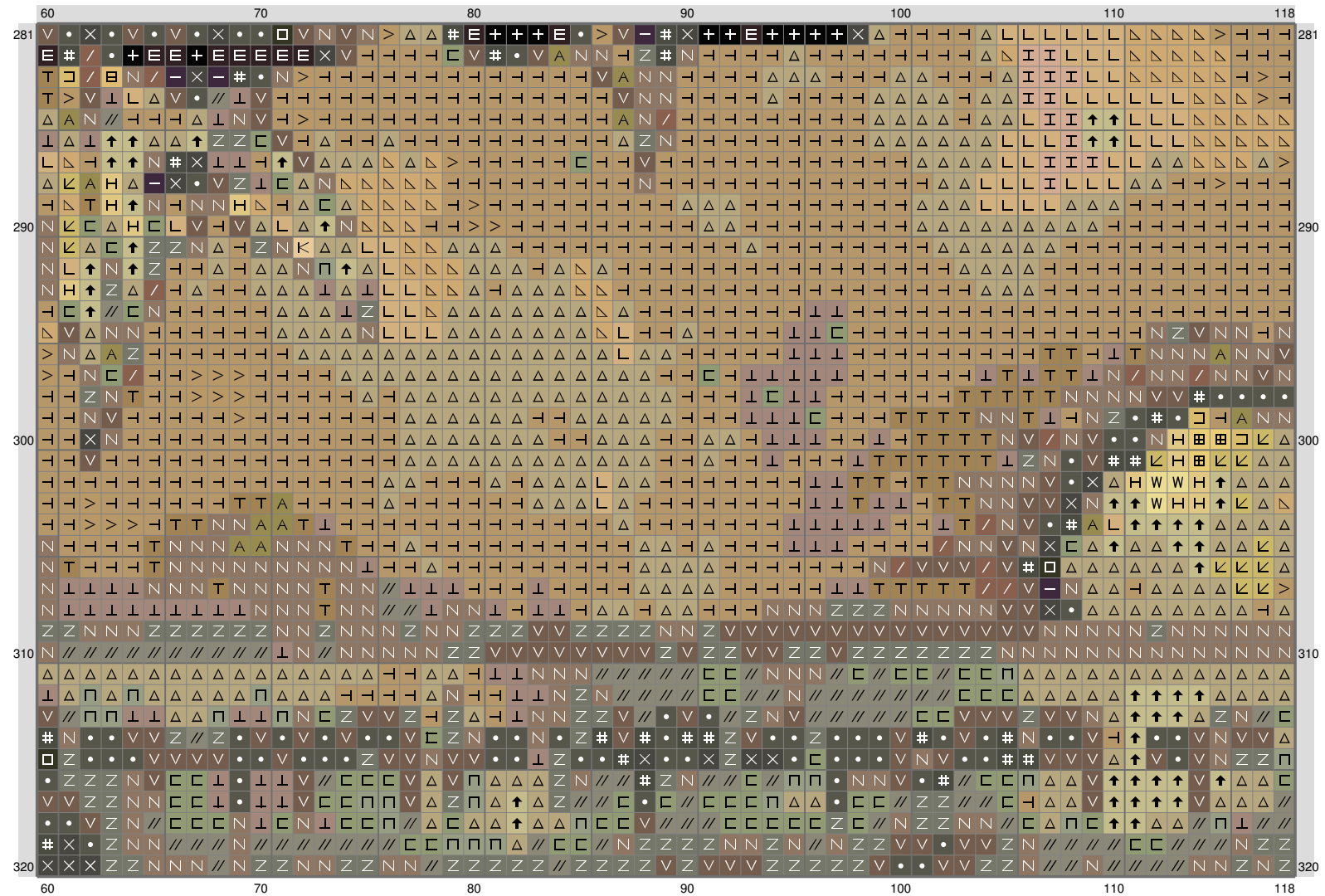
## Middle Earth Map



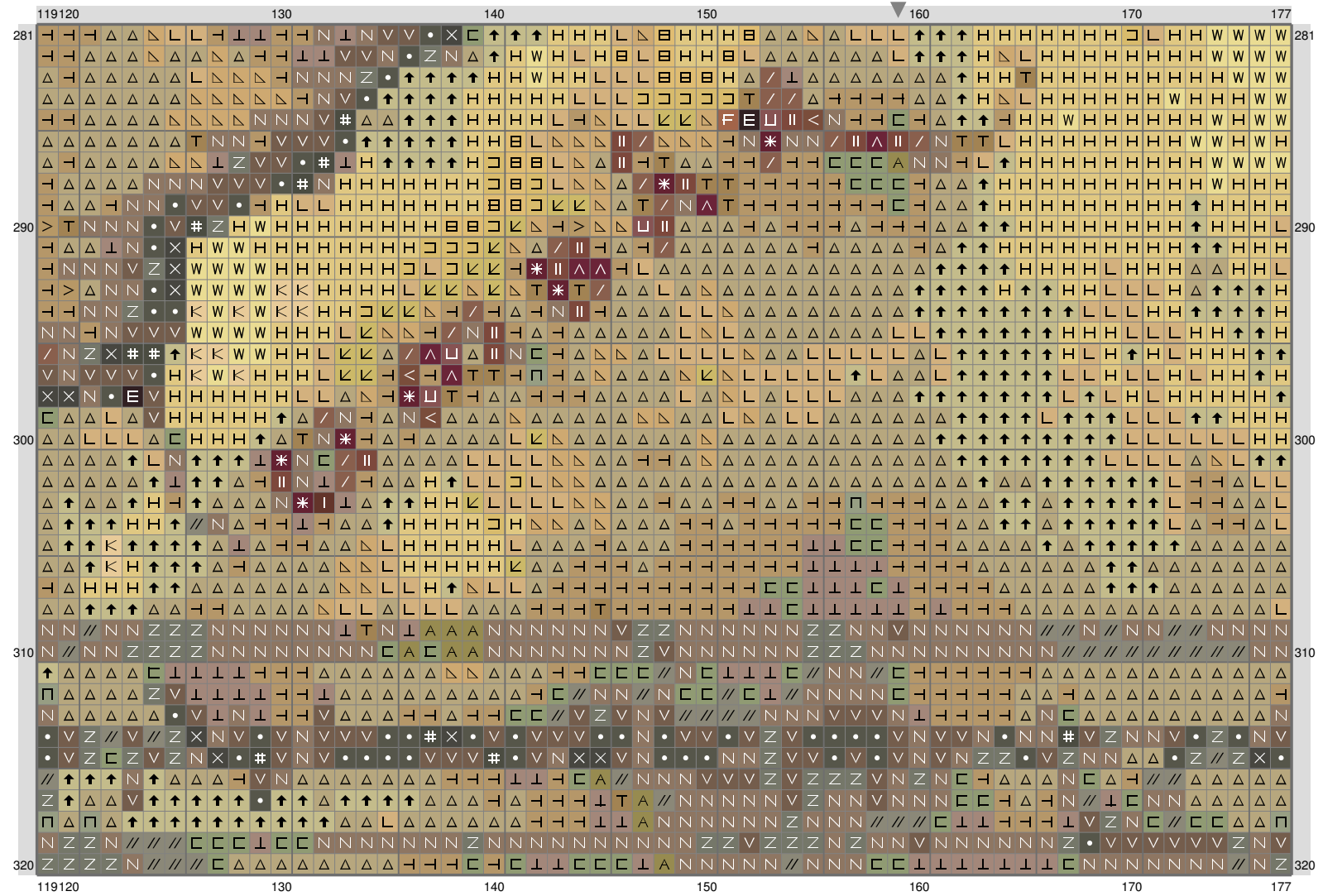
## Middle Earth Map



## Middle Earth Map



# Middle Earth Map



## Middle Earth Map

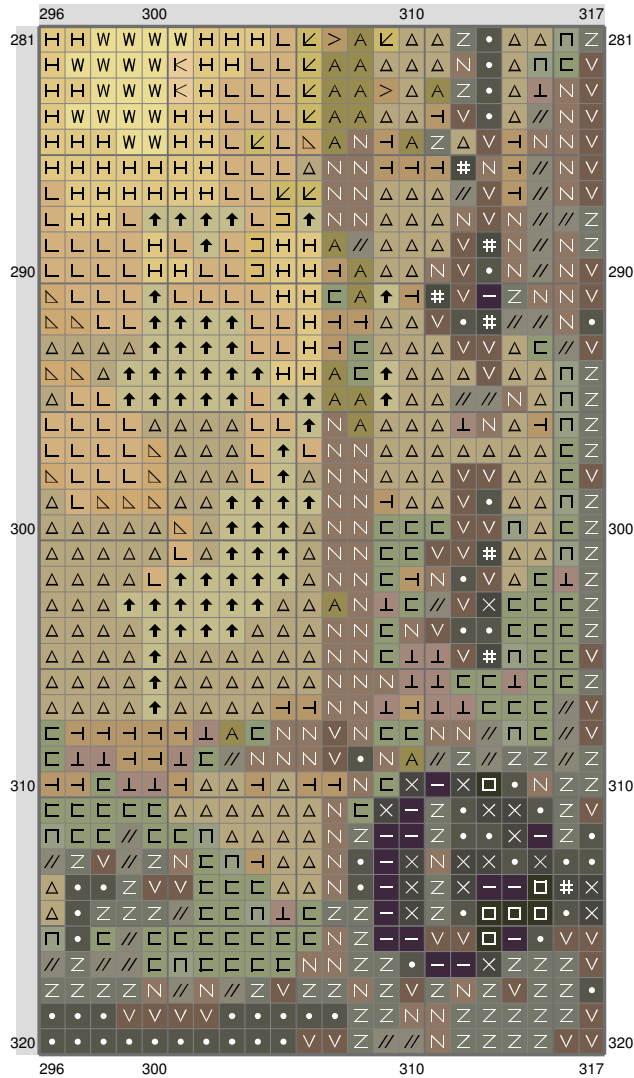
[illegible]

## Middle Earth Map

[illegible]



## Middle Earth Map



## Middle Earth Map

Stitch Count: 317w x 320h

Finished Size: 73.19 cm x 73.89 cm (22 ct./inch)

Cloth: Aida

Cloth's Color: White

# of colors: 39 Colors

Color Table (DMC)

### Cross Stitch

|  |     |            |  |      |           |
|--|-----|------------|--|------|-----------|
|  | 165 | (4319 ct)  |  | 902  | (170 ct)  |
|  | 310 | (58 ct)    |  | 934  | (317 ct)  |
|  | 370 | (8729 ct)  |  | 935  | (1296 ct) |
|  | 371 | (1526 ct)  |  | 938  | (164 ct)  |
|  | 372 | (15969 ct) |  | 939  | (391 ct)  |
|  | 422 | (3852 ct)  |  | 3012 | (1293 ct) |
|  | 433 | (196 ct)   |  | 3013 | (6708 ct) |
|  | 434 | (324 ct)   |  | 3021 | (1591 ct) |
|  | 522 | (1204 ct)  |  | 3362 | (3581 ct) |
|  | 610 | (804 ct)   |  | 3364 | (4654 ct) |
|  | 611 | (1968 ct)  |  | 3781 | (5464 ct) |
|  | 640 | (3121 ct)  |  | 3787 | (4622 ct) |
|  | 676 | (1331 ct)  |  | 3790 | (8567 ct) |
|  | 729 | (2700 ct)  |  | 3821 | (353 ct)  |
|  | 734 | (3517 ct)  |  | 3822 | (665 ct)  |
|  | 744 | (669 ct)   |  | 3864 | (277 ct)  |
|  | 779 | (183 ct)   |  |      |           |
|  | 801 | (618 ct)   |  |      |           |
|  | 814 | (145 ct)   |  |      |           |
|  | 823 | (545 ct)   |  |      |           |
|  | 831 | (1411 ct)  |  |      |           |
|  | 833 | (1303 ct)  |  |      |           |
|  | 834 | (6835 ct)  |  |      |           |