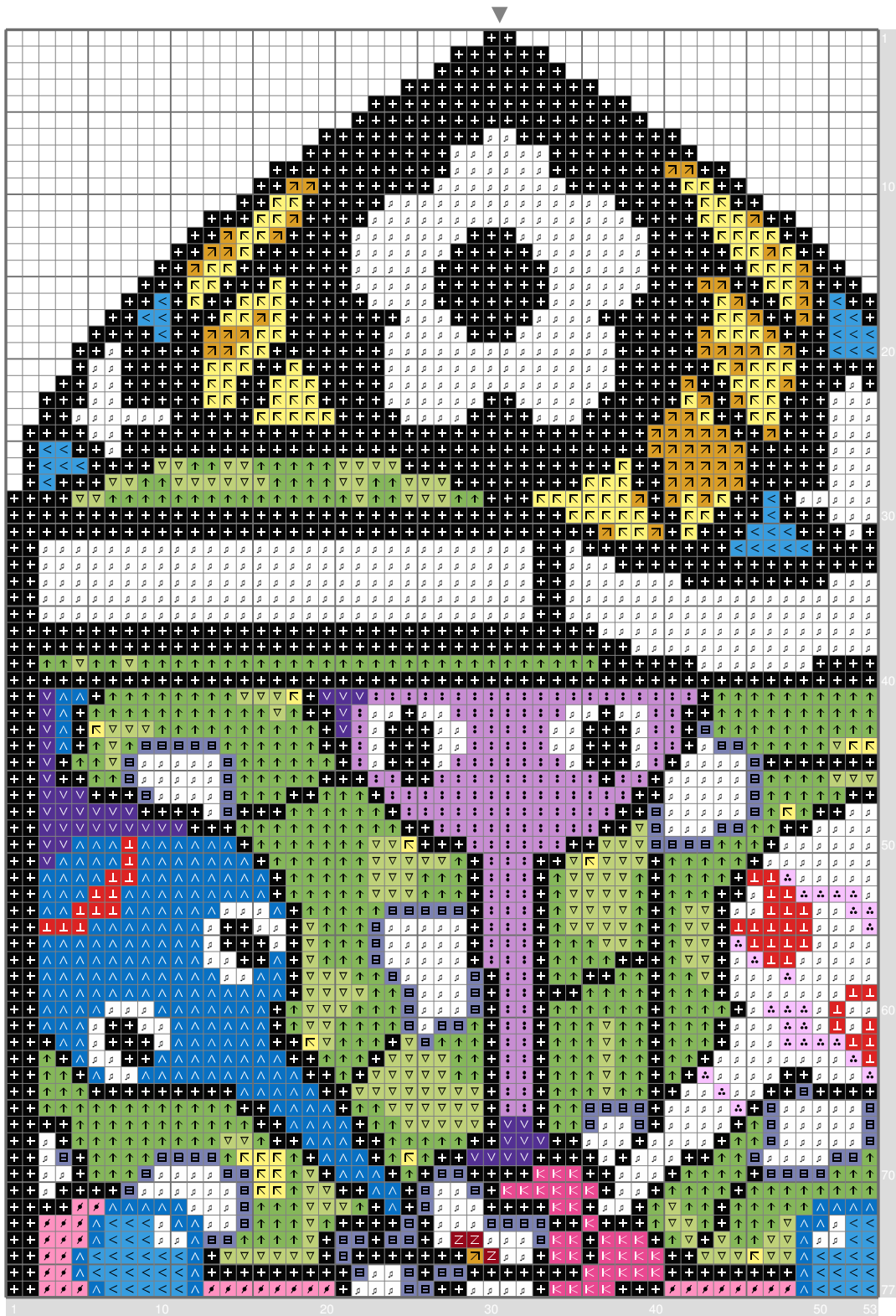


Untitled

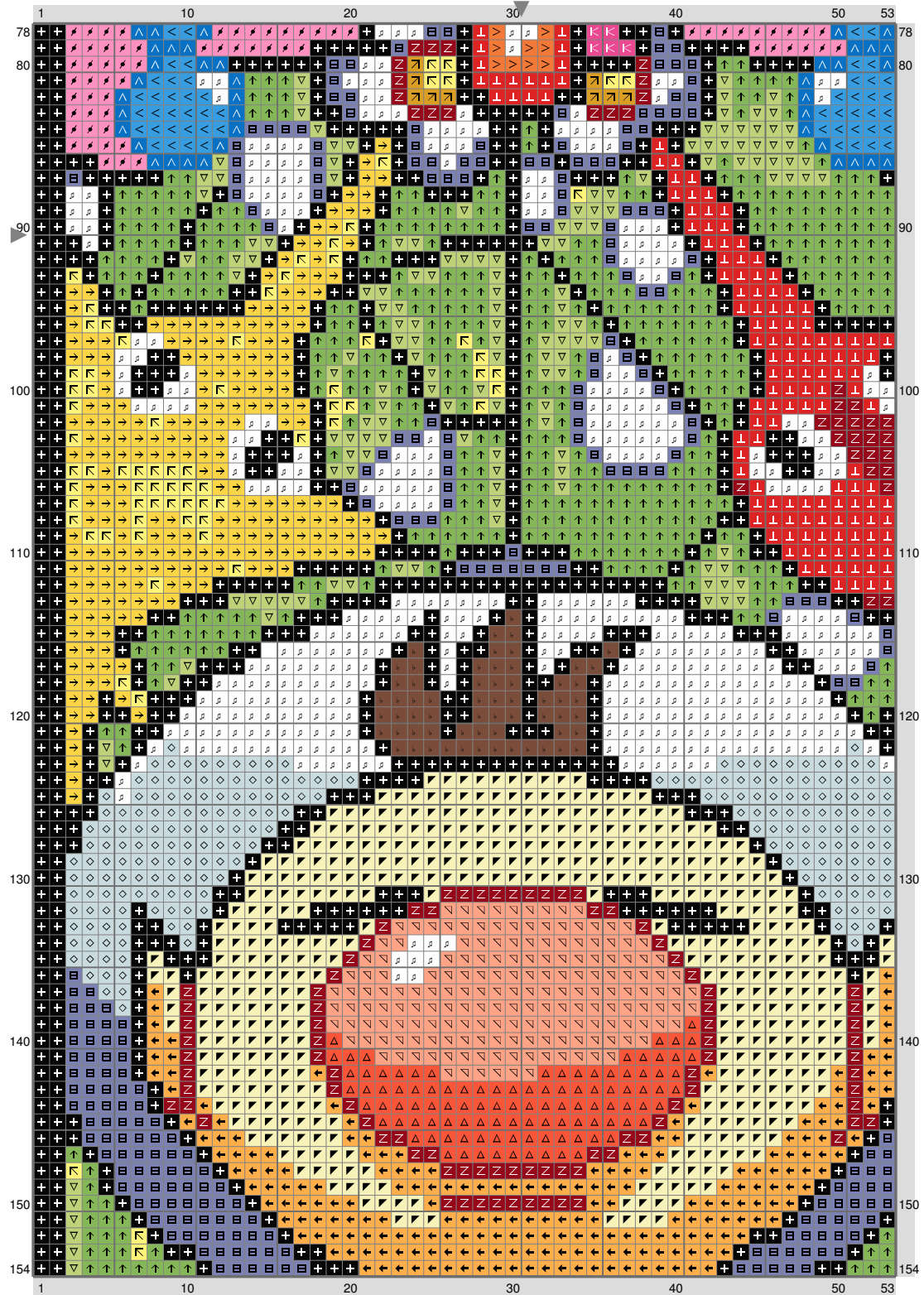


Untitled



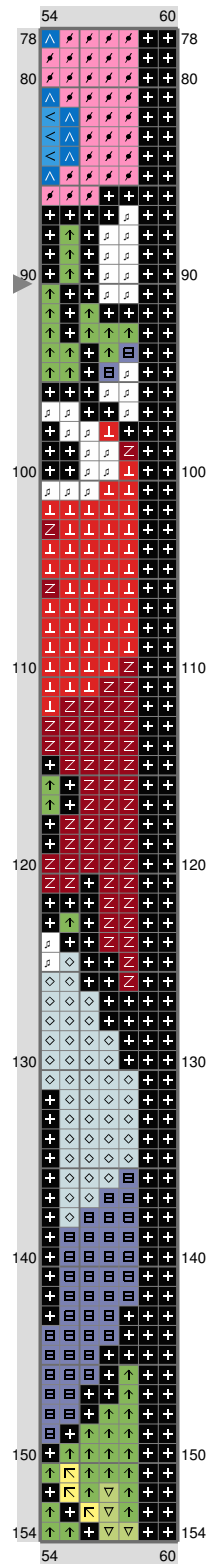
(This chart is printed using KG-Chart LE for Cross Stitch.)

Untitled



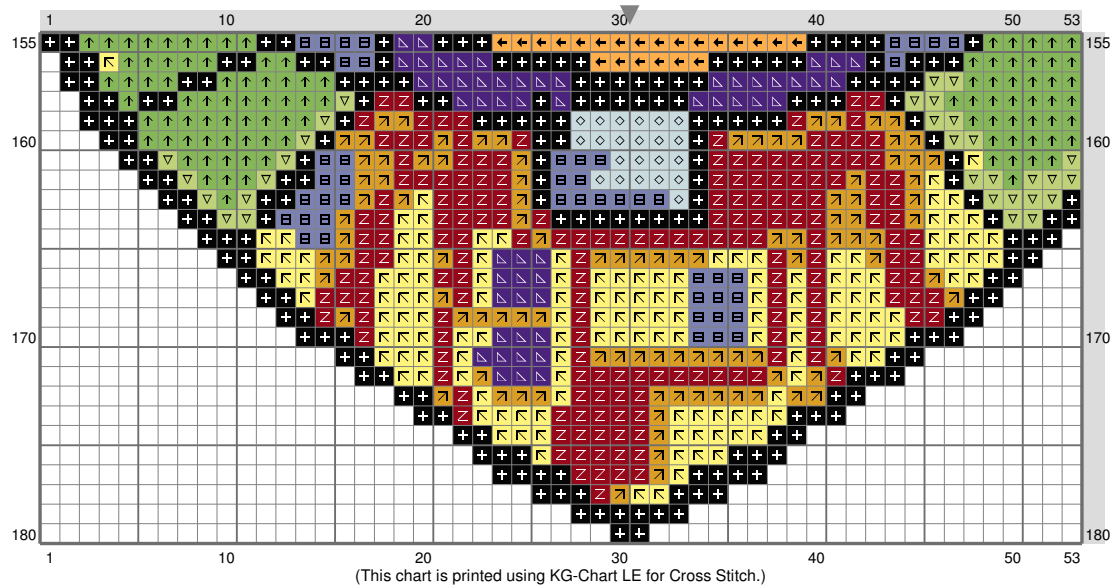
(This chart is printed using KG-Chart LE for Cross Stitch.)

Untitled

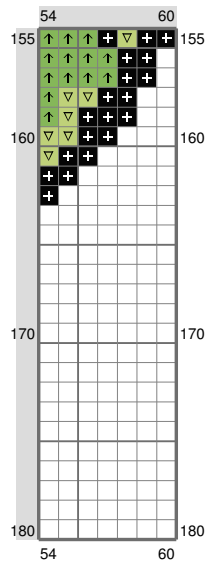


(This chart is printed using KG-Chart LE for Cross Stitch.)

Untitled



Untitled



Stitch Count: 60w x 180h
 Finished Size: 10.88 cm x 32.65 cm (28 ct./inch)
 Cloth: Linen
 Cloth's Color: White
 # of colors: 25 Colors

Color Table (DMC)

Cross Stitch

>	3853	(9 ct)
⋮	153	(36 ct)
⌞	3805	(37 ct)
∇	796	(41 ct)
⌞	820	(54 ct)
⌞	433	(62 ct)
△	947	(107 ct)
⌞	996	(132 ct)
⌞	894	(145 ct)
⋮	209	(165 ct)
⌞	3852	(176 ct)
⌞	721	(181 ct)
⌞	349	(239 ct)
→	444	(240 ct)
←	728	(245 ct)
⌞	3843	(265 ct)
⌞	775	(288 ct)
⌞	307	(346 ct)
⌞	498	(357 ct)
∇	472	(377 ct)
⌞	793	(445 ct)
⌞	3078	(461 ct)
↑	704	(1122 ct)
♩	B5200	(1319 ct)
+	310	(2696 ct)

(This chart is printed using Chart LE for Cross Stitch.)