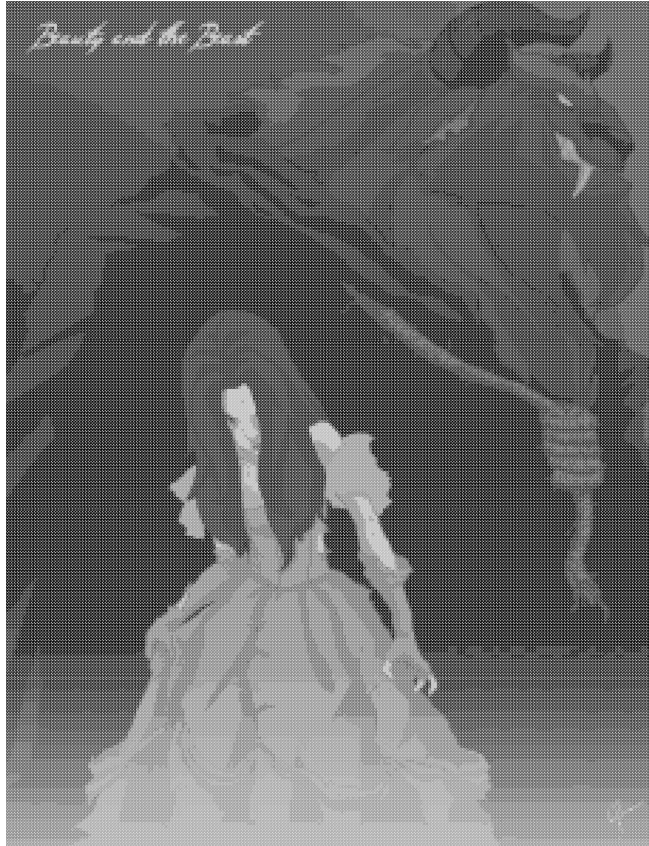
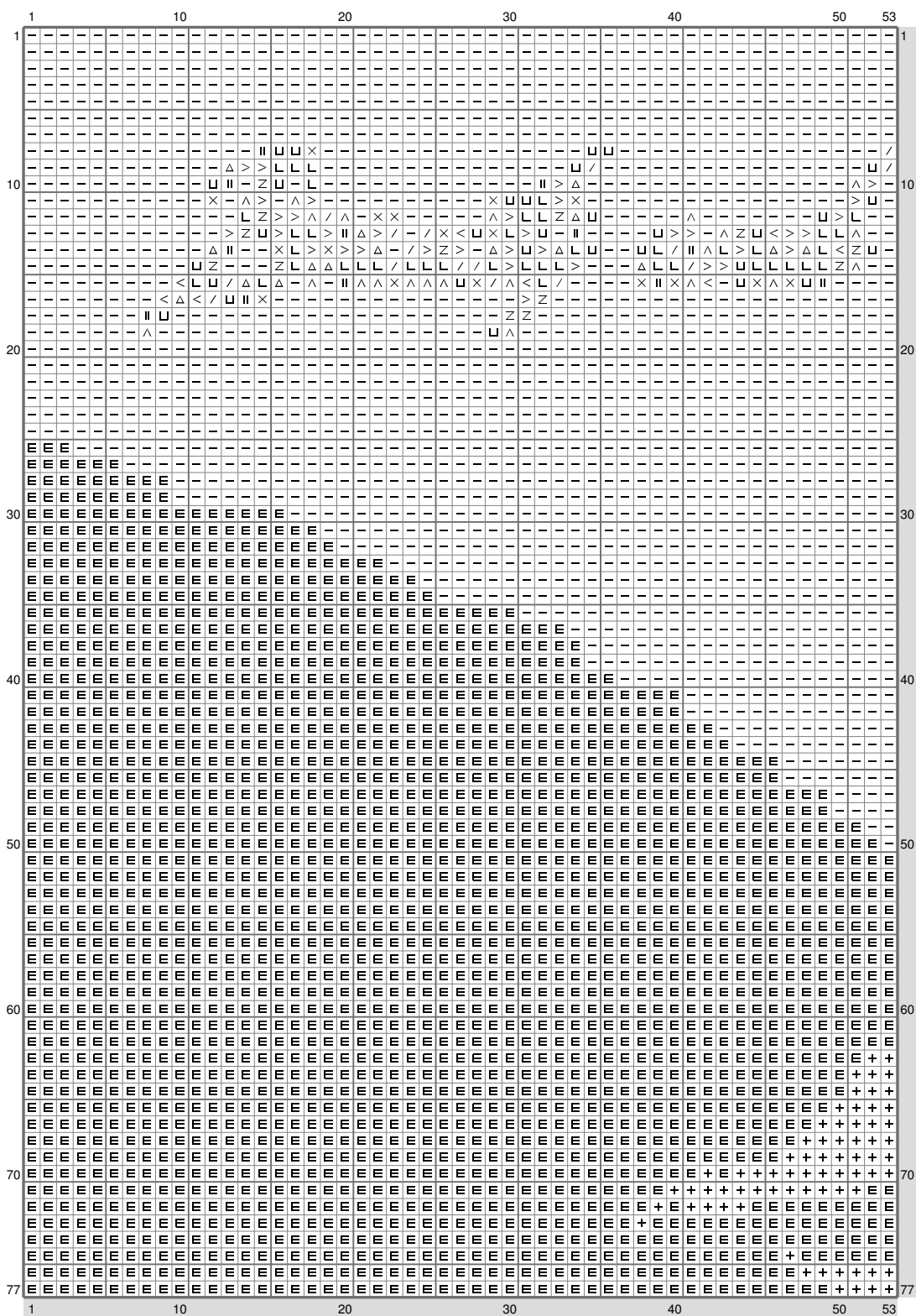


Twisted Belle

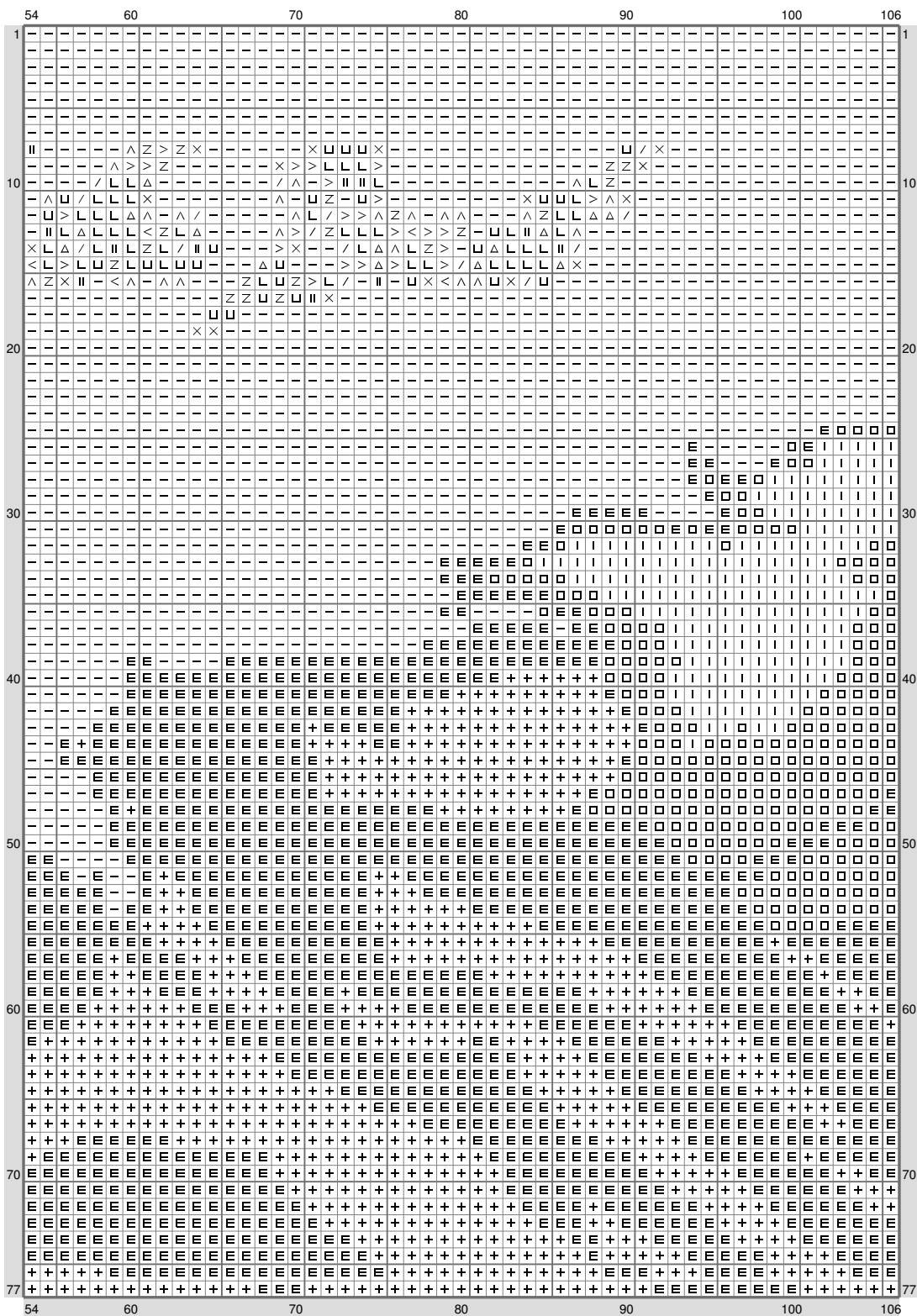


Twisted Belle



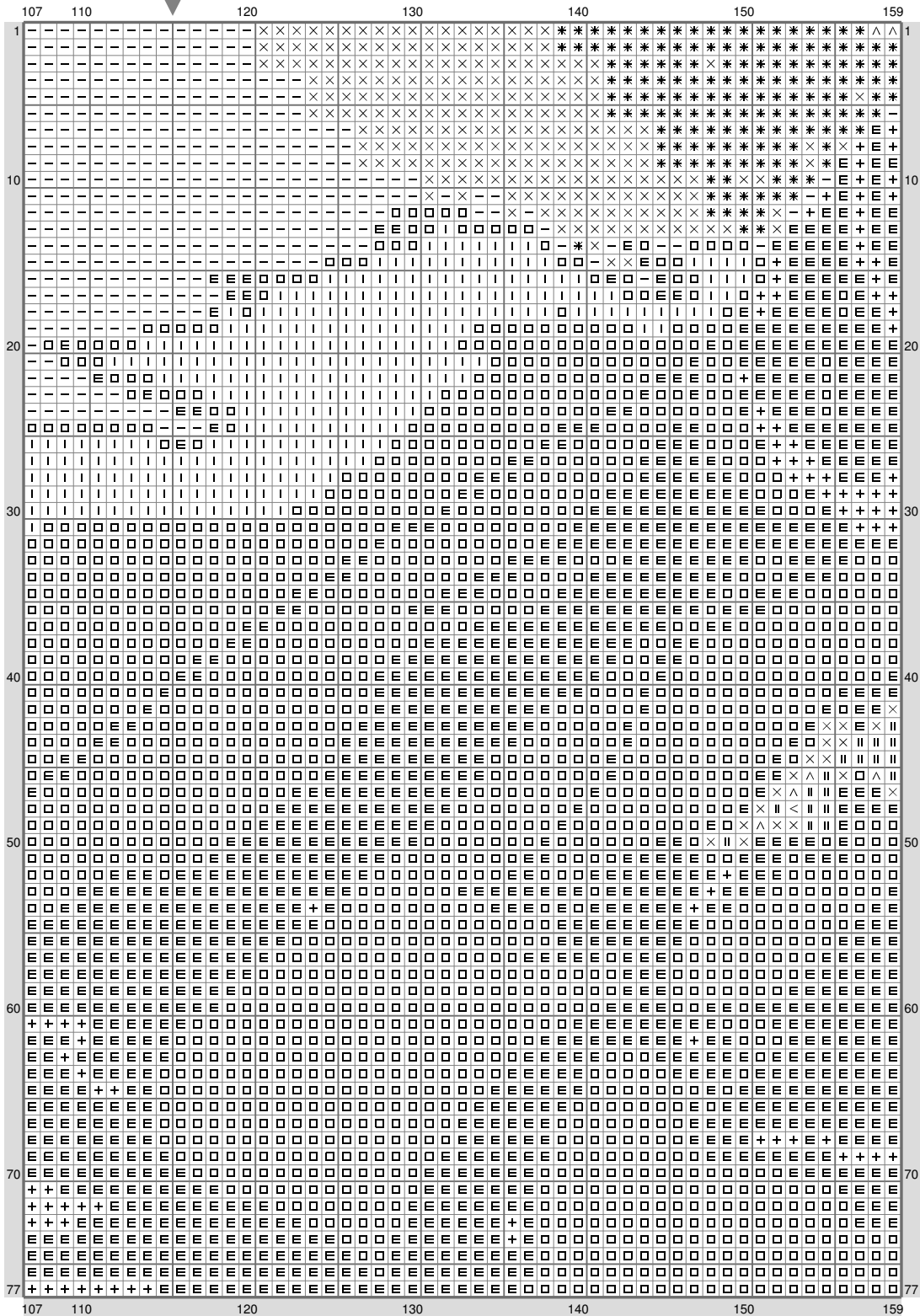
(This chart is printed using KG-Chart LE for Cross Stitch.)

Twisted Belle



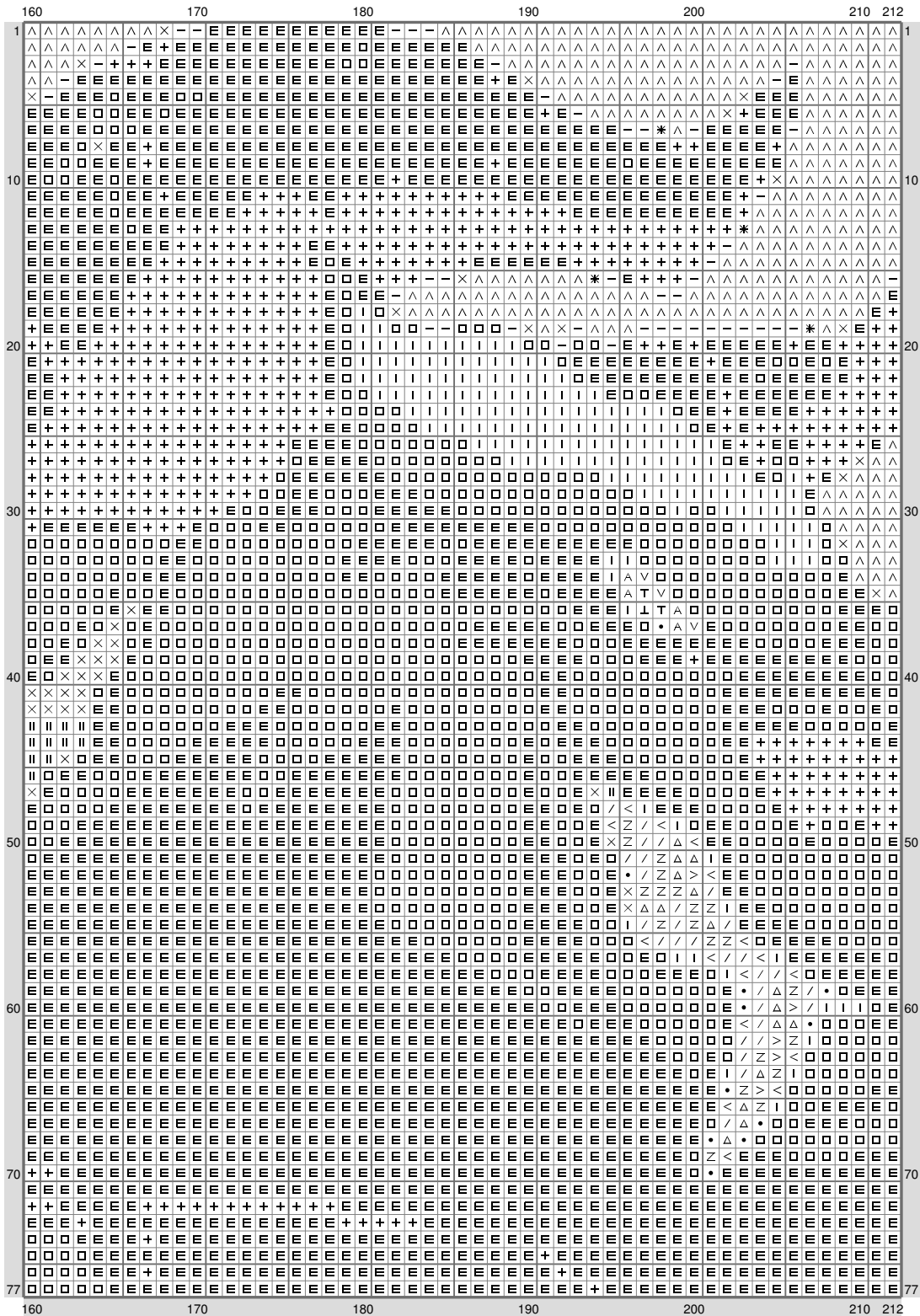
(This chart is printed using KG-Chart LE for Cross Stitch.)

Twisted Belle



(This chart is printed using KG-Chart LE for Cross Stitch.)

Twisted Belle



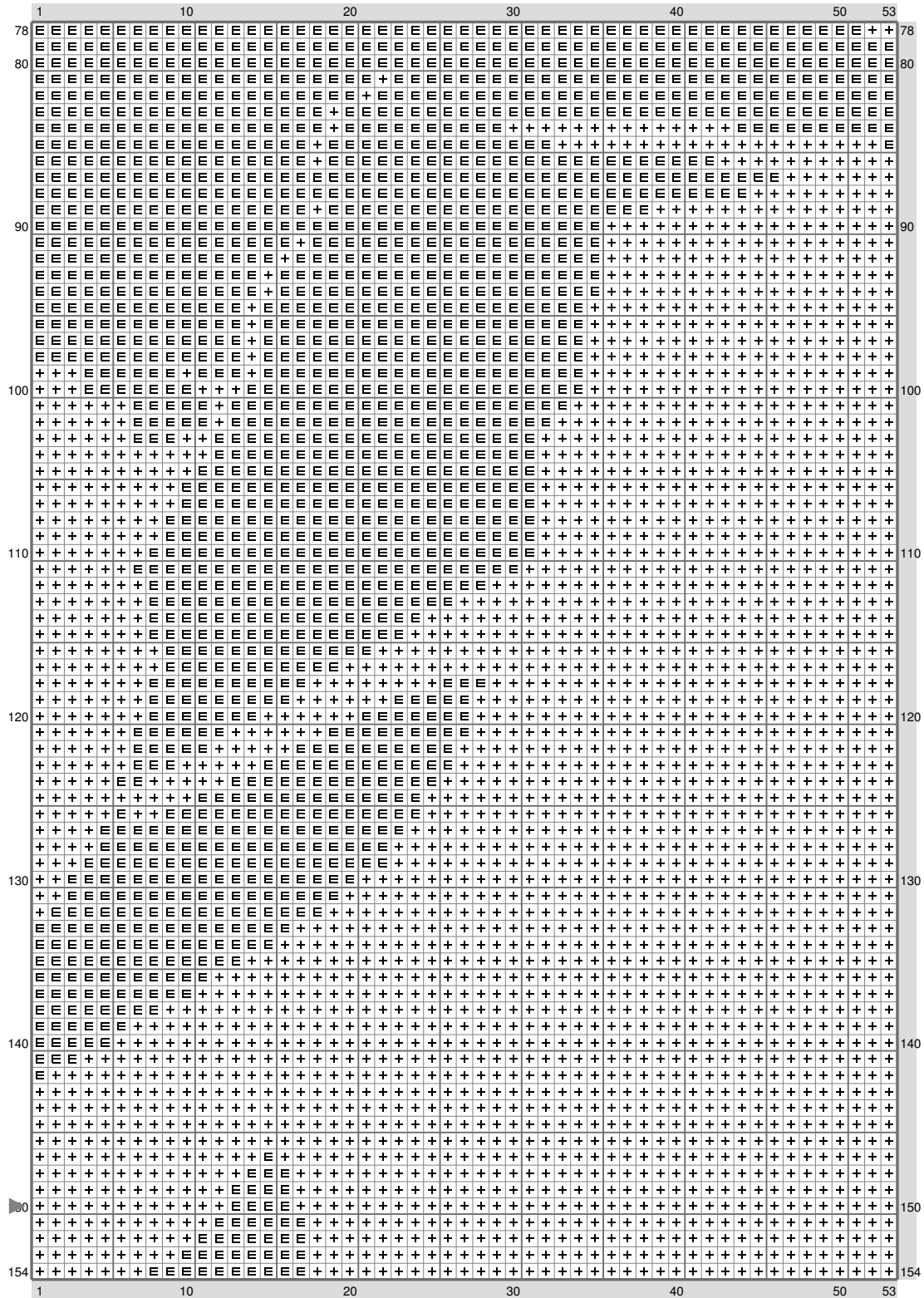
(This chart is printed using KG-Chart LE for Cross Stitch.)

Twisted Belle

[illegible]

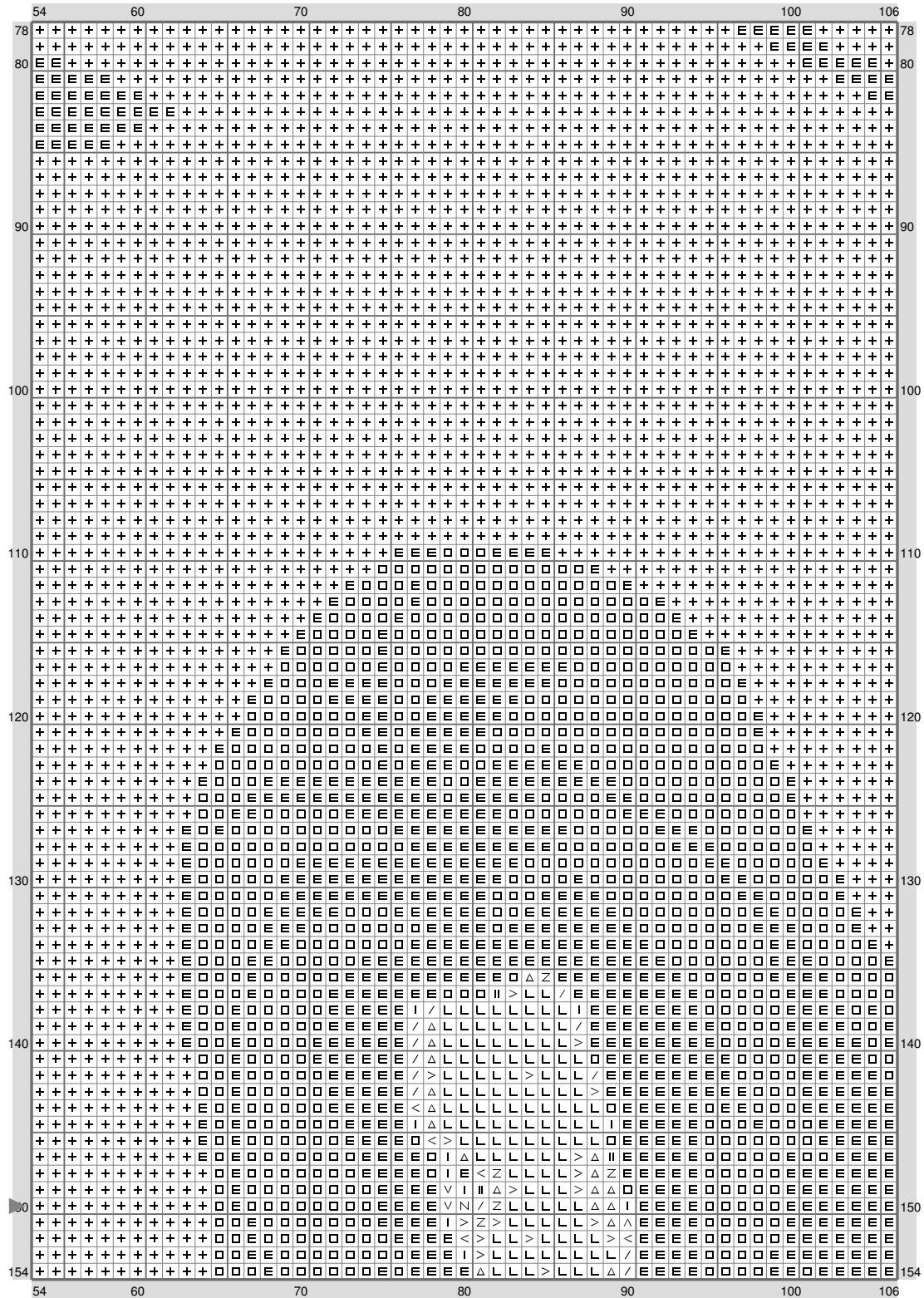
(This chart is printed using KG-Chart LE for Cross Stitch.
6 / 21

Twisted Belle



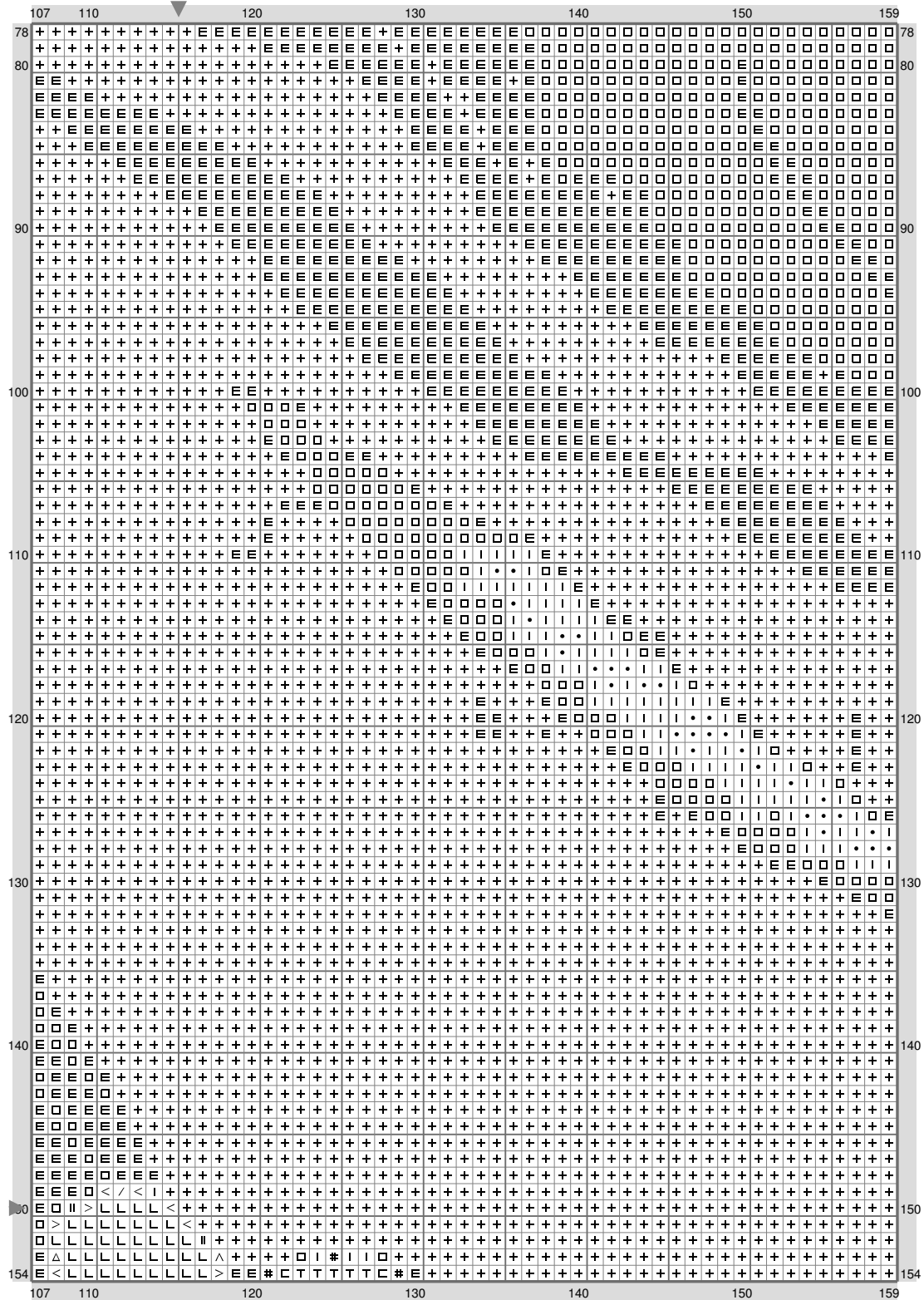
(This chart is printed using KG-Chart LE for Cross Stitch.)

Twisted Belle



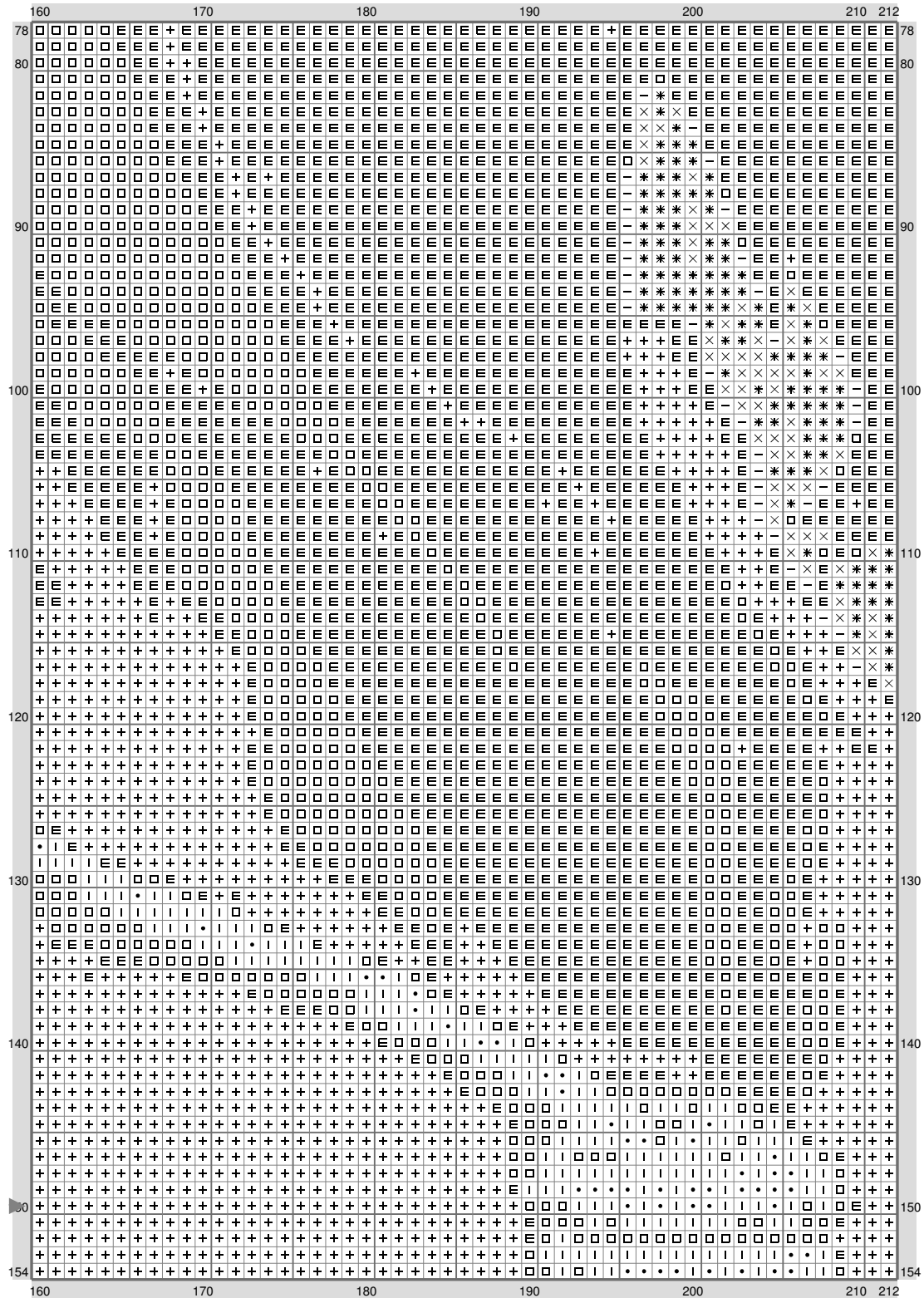
(This chart is printed using KG-Chart LE for Cross Stitch.)

Twisted Belle



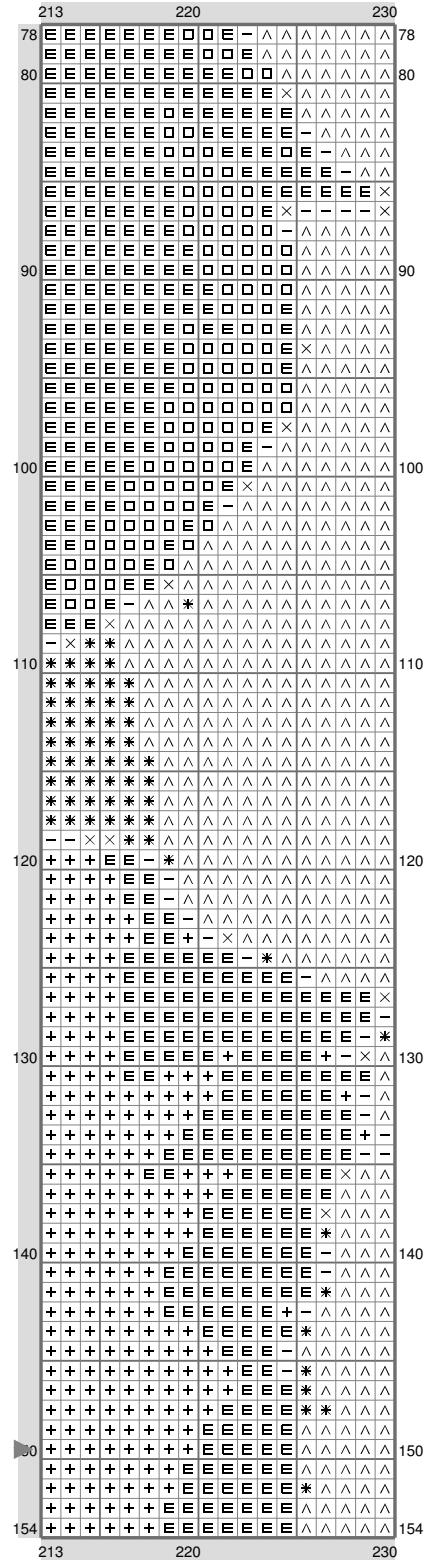
(This chart is printed using KG-Chart LE for Cross Stitch.)

Twisted Belle



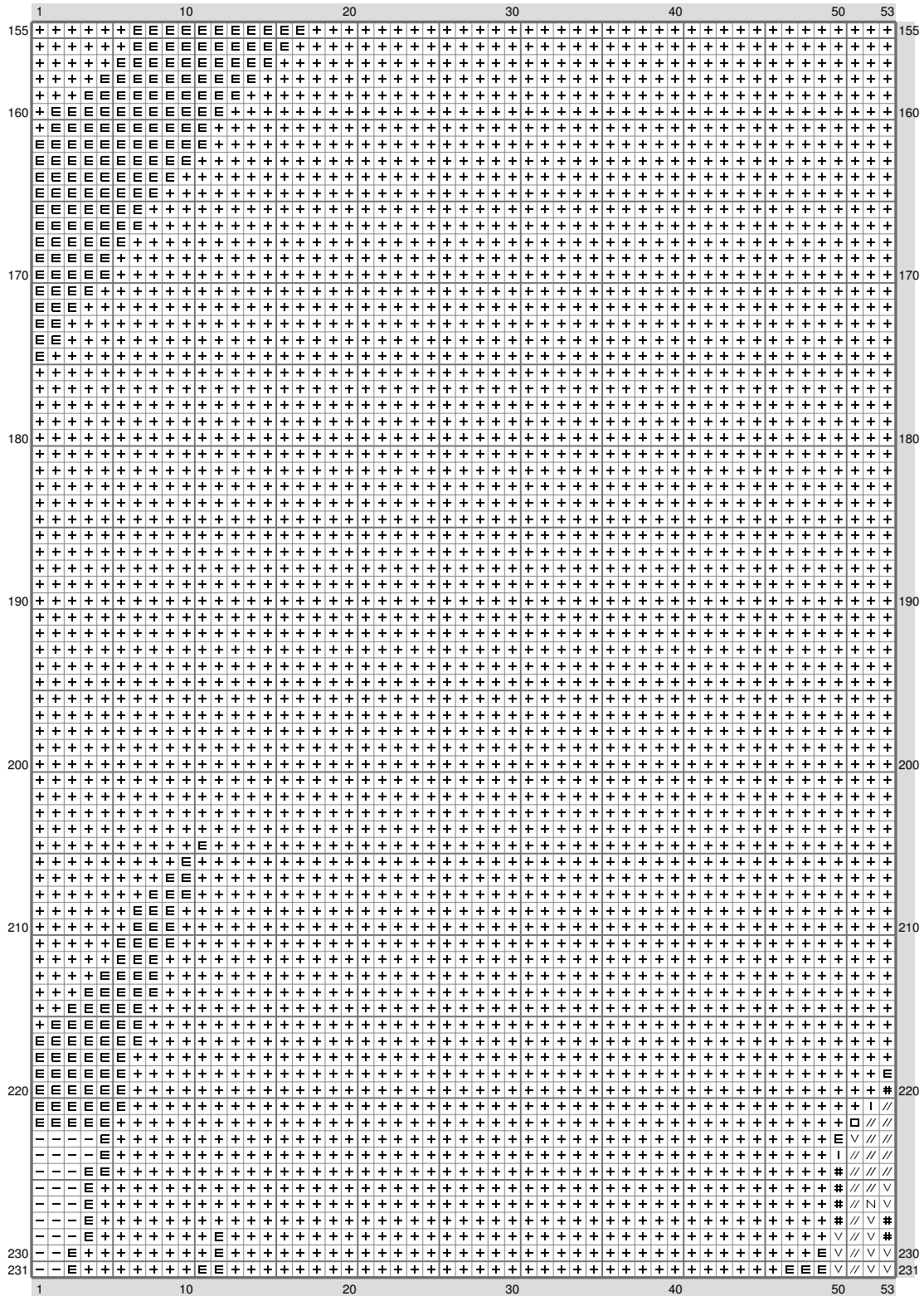
(This chart is printed using KG-Chart LE for Cross Stitch.)

Twisted Belle



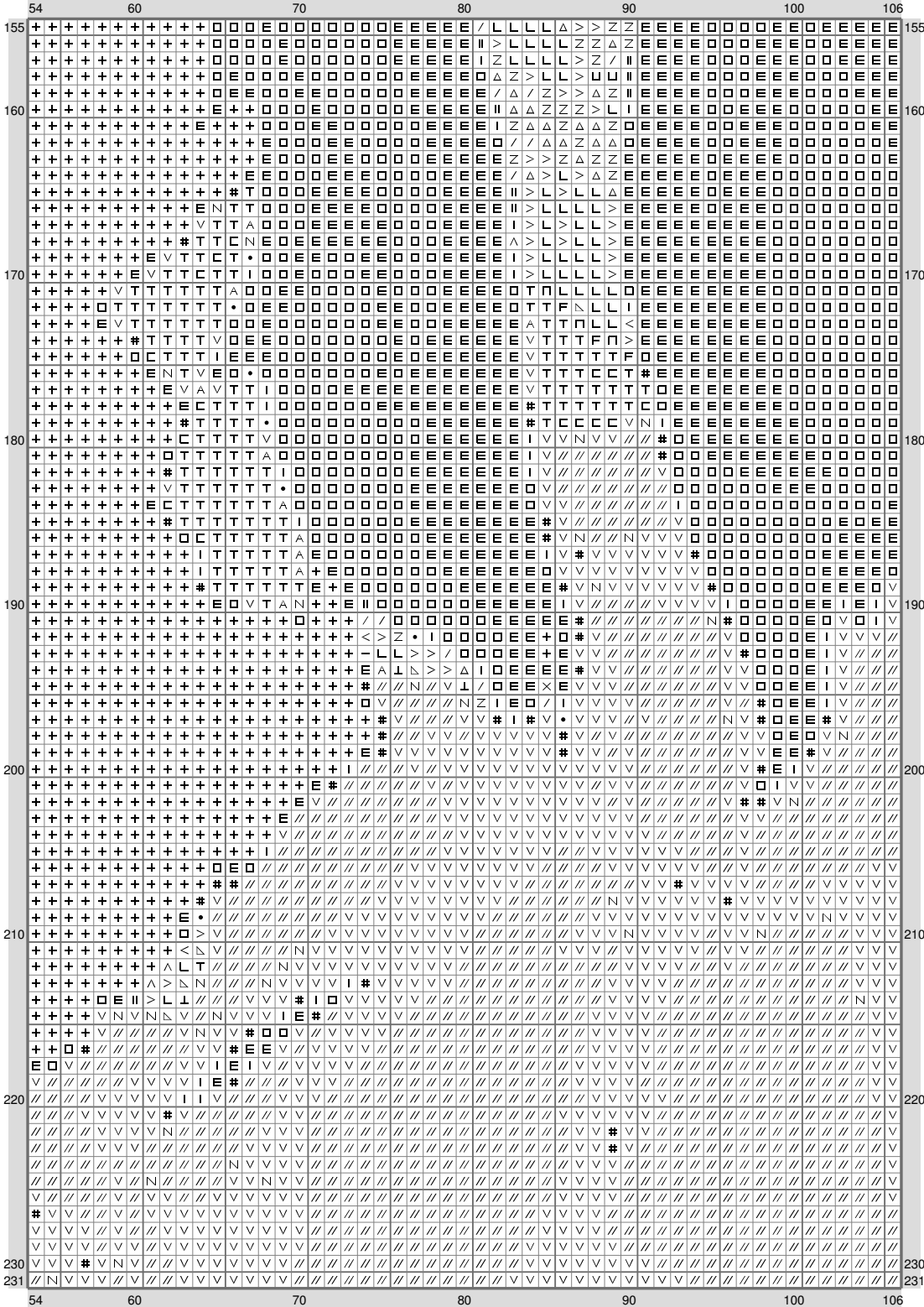
(This chart is printed using KG-Chart LE for Cross Stitch.)

Twisted Belle



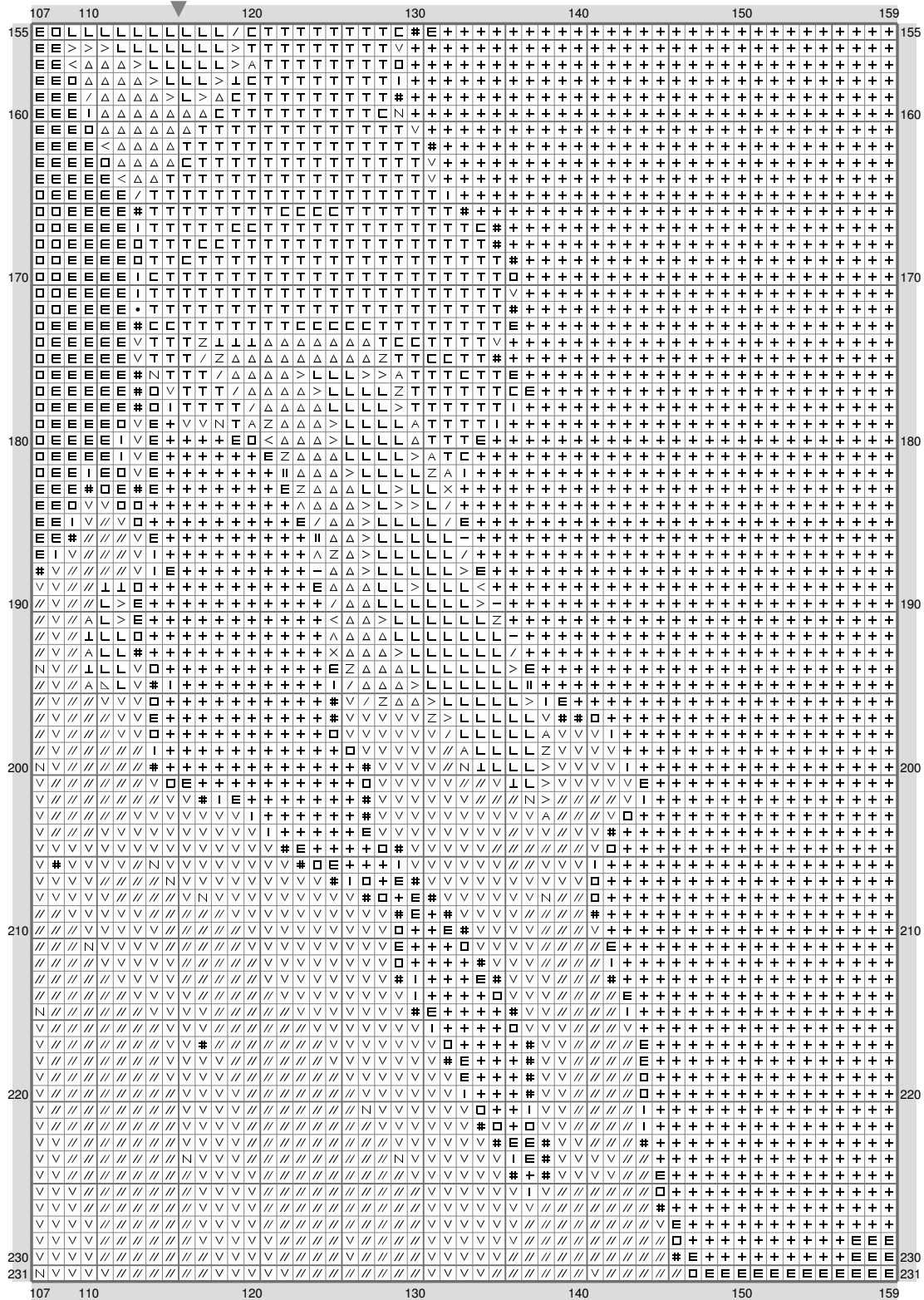
(This chart is printed using KG-Chart LE for Cross Stitch.)

Twisted Belle



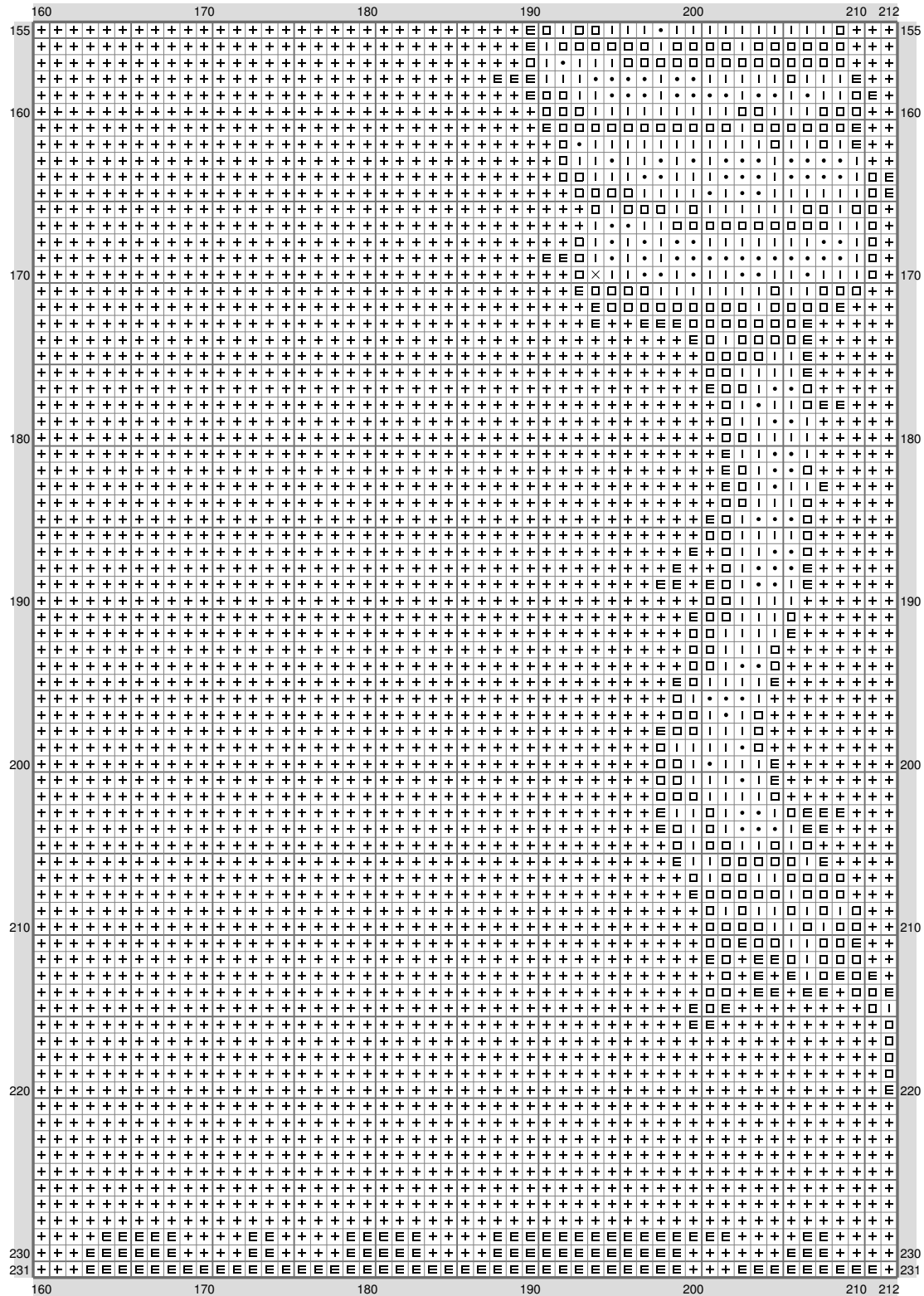
(This chart is printed using KG-Chart LE for Cross Stitch.)

Twisted Belle



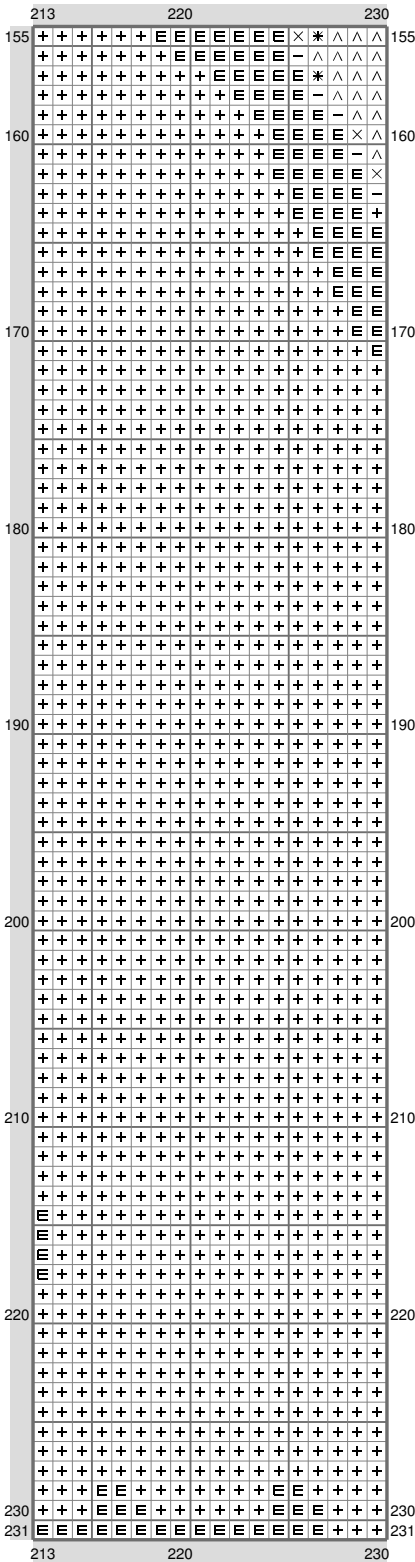
(This chart is printed using KG-Chart LE for Cross Stitch.)

Twisted Belle



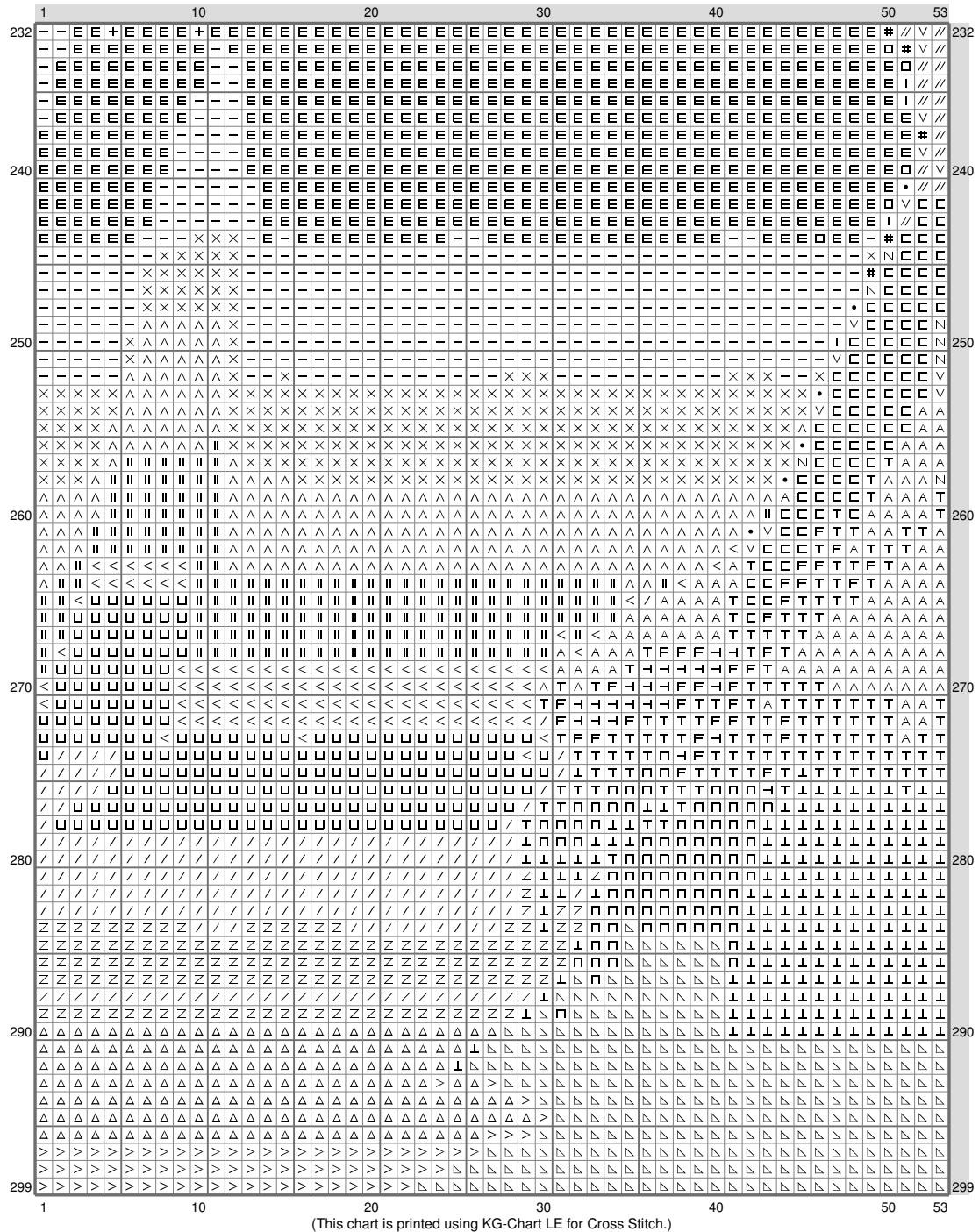
(This chart is printed using KG-Chart LE for Cross Stitch.)

Twisted Belle

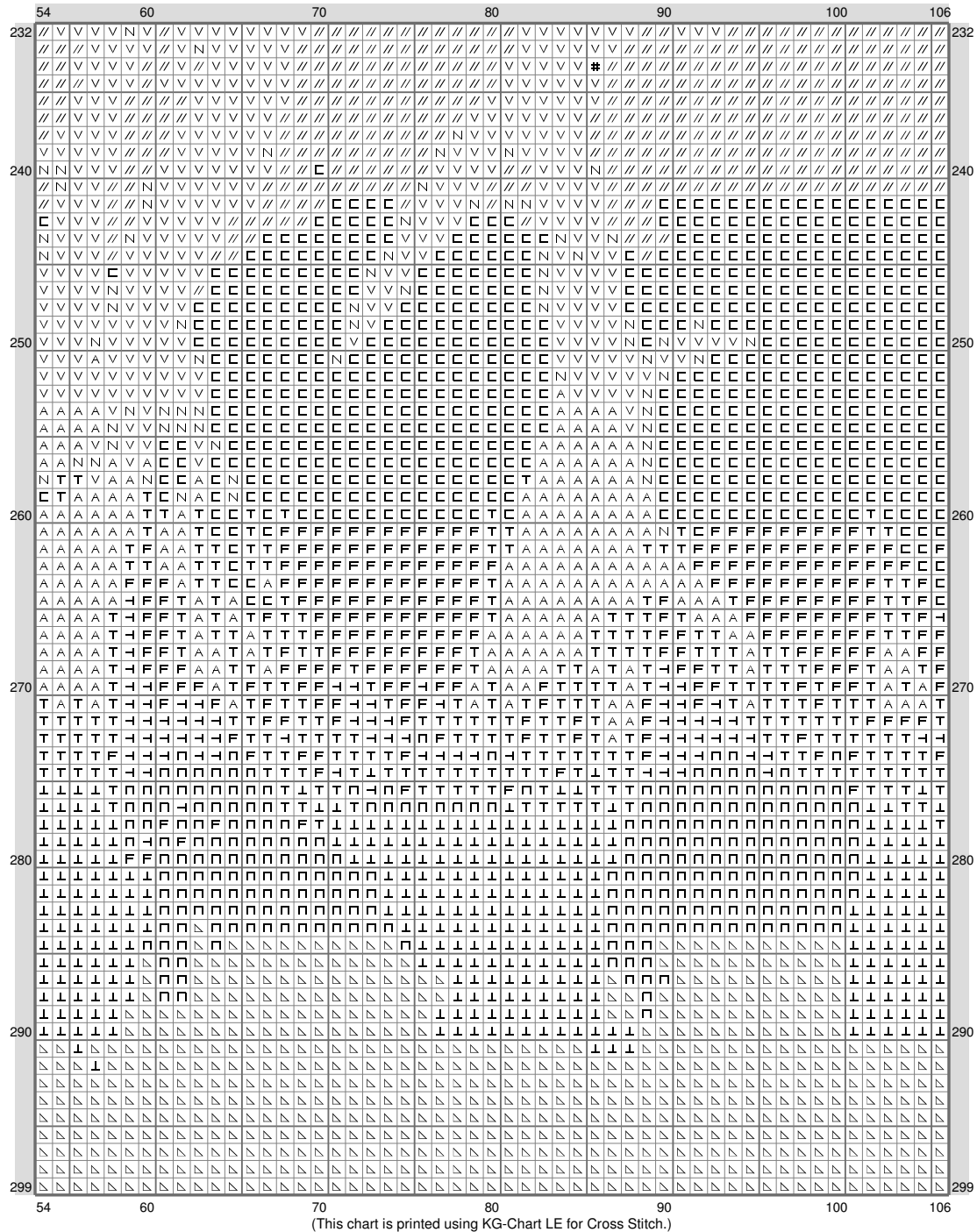


(This chart is printed using KG-Chart LE for Cross Stitch.)

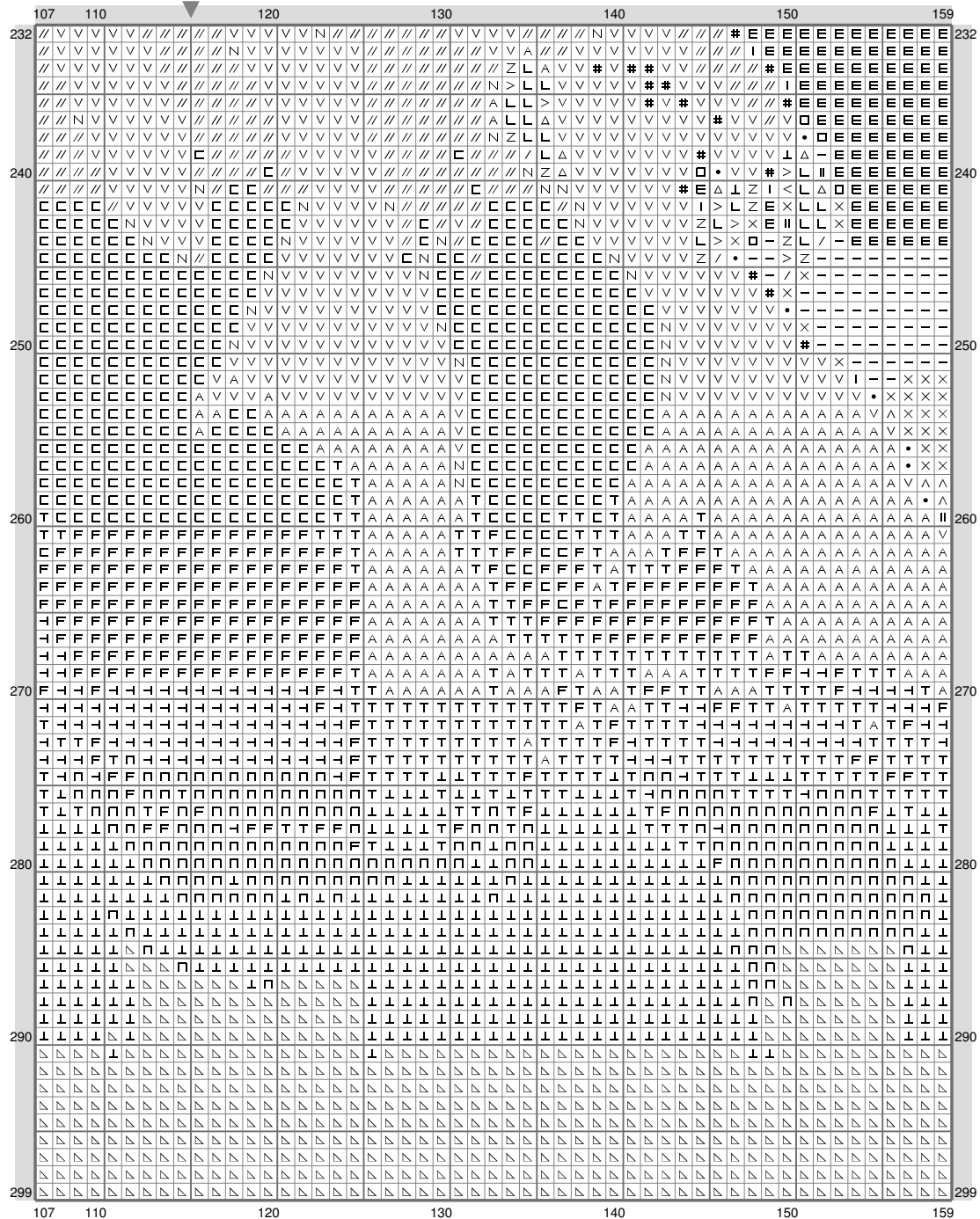
Twisted Belle



Twisted Belle

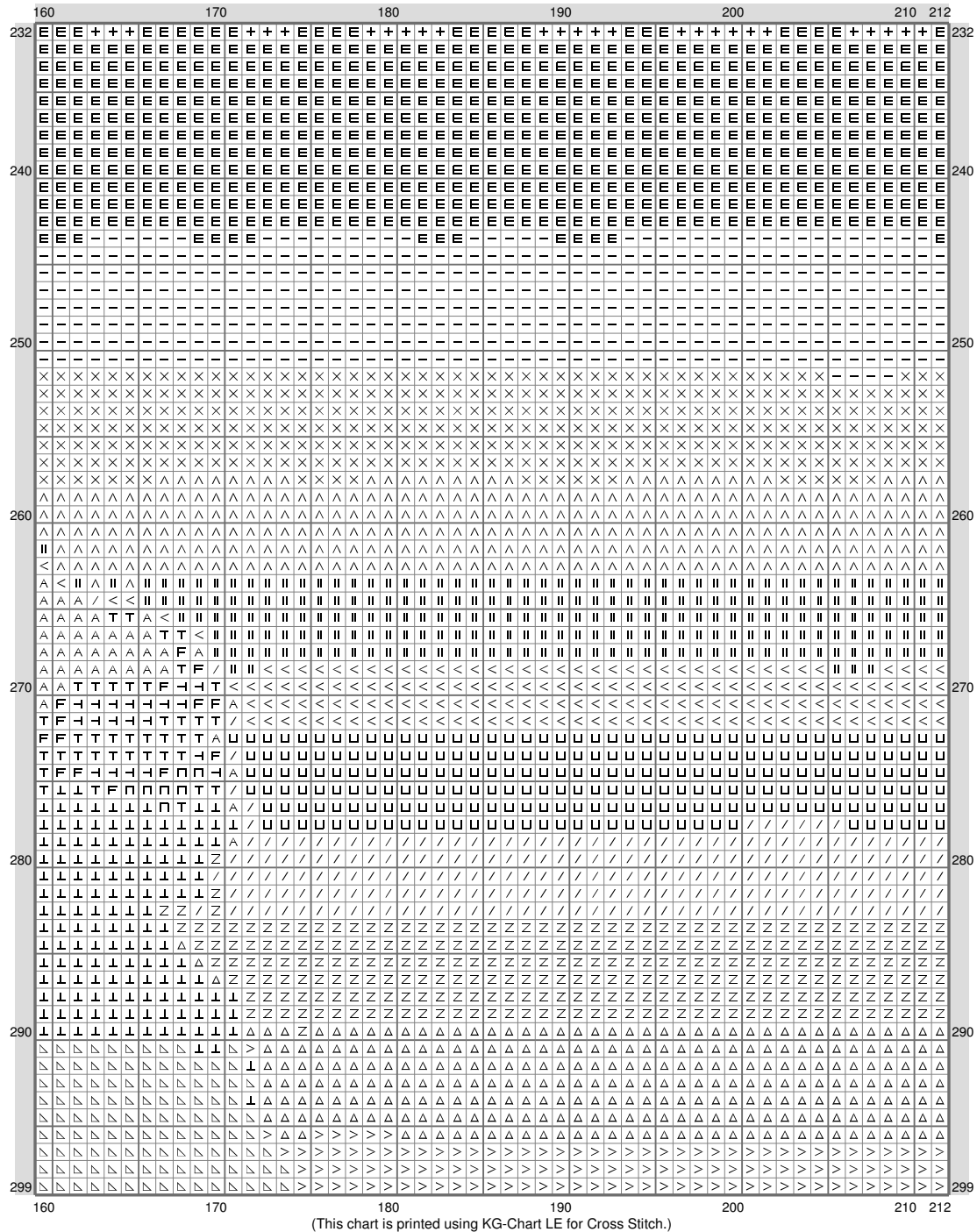


Twisted Belle

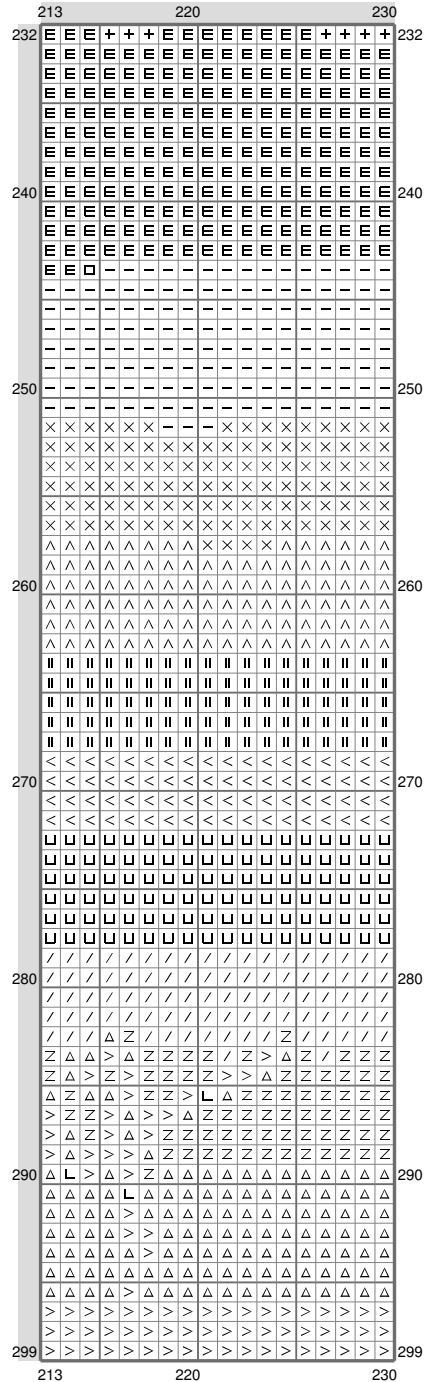


(This chart is printed using KG-Chart LE for Cross Stitch.)

Twisted Belle



Twisted Belle



Stitch Count: 230w x 299h

Finished Size: 41.72 cm x 54.24 cm (28 ct./inch)

Cloth: Aida

Cloth's Color: White

of colors: 29 Colors

Color Table (DMC)

Cross Stitch

+	310	(21172 ct)
E	939	(14849 ct)
□	934	(5922 ct)
—	500	(4812 ct)
×	3021	(1162 ct)
*	336	(343 ct)
I	936	(1296 ct)
#	730	(152 ct)
•	3011	(217 ct)
V	732	(2036 ct)
^	3799	(2550 ct)
	535	(573 ct)
<	645	(401 ct)
U	317	(616 ct)
/	640	(594 ct)
Z	646	(615 ct)
N	680	(166 ct)
//	3852	(2148 ct)
A	471	(788 ct)
□	3820	(1244 ct)
F	833	(585 ct)
T	734	(1191 ct)
⊥	3013	(1146 ct)
└	3821	(253 ct)
□	834	(593 ct)
△	3022	(795 ct)
>	523	(451 ct)
▢	3046	(1625 ct)
L	3072	(475 ct)

(This chart is printed using KG-Chart LE for Cross Stitch.)