

## Twisted Aurora



# Twisted Aurora

	1	10	20	30	40	50	53	
1	/	/	/	/	/	/	/	1
2	/	/	/	/	/	/	/	2
3	/	/	/	/	/	/	/	3
4	/	/	/	/	/	/	/	4
5	/	/	/	/	/	/	/	5
6	/	/	/	/	/	/	/	6
7	/	/	/	/	/	/	/	7
8	/	/	/	/	/	/	/	8
9	/	/	/	/	/	/	/	9
10	/	/	/	/	/	/	/	10
11	/	/	/	/	/	/	/	11
12	/	/	/	/	/	/	/	12
13	/	/	/	/	/	/	/	13
14	/	/	/	/	/	/	/	14
15	/	/	/	/	/	/	/	15
16	/	/	/	/	/	/	/	16
17	/	/	/	/	/	/	/	17
18	/	/	/	/	/	/	/	18
19	/	/	/	/	/	/	/	19
20	/	/	/	/	/	/	/	20
21	/	/	/	/	/	/	/	21
22	/	/	/	/	/	/	/	22
23	/	/	/	/	/	/	/	23
24	/	/	/	/	/	/	/	24
25	/	/	/	/	/	/	/	25
26	/	/	/	/	/	/	/	26
27	/	/	/	/	/	/	/	27
28	/	/	/	/	/	/	/	28
29	/	/	/	/	/	/	/	29
30	/	/	/	/	/	/	/	30
31	/	/	/	/	/	/	/	31
32	/	/	/	/	/	/	/	32
33	/	/	/	/	/	/	/	33
34	/	/	/	/	/	/	/	34
35	/	/	/	/	/	/	/	35
36	/	/	/	/	/	/	/	36
37	/	/	/	/	/	/	/	37
38	/	/	/	/	/	/	/	38
39	/	/	/	/	/	/	/	39
40	/	/	/	/	/	/	/	40
41	/	/	/	/	/	/	/	41
42	/	/	/	/	/	/	/	42
43	/	/	/	/	/	/	/	43
44	/	/	/	/	/	/	/	44
45	/	/	/	/	/	/	/	45
46	/	/	/	/	/	/	/	46
47	/	/	/	/	/	/	/	47
48	/	/	/	/	/	/	/	48
49	/	/	/	/	/	/	/	49
50	/	/	/	/	/	/	/	50
51	/	/	/	/	/	/	/	51
52	/	/	/	/	/	/	/	52
53	/	/	/	/	/	/	/	53

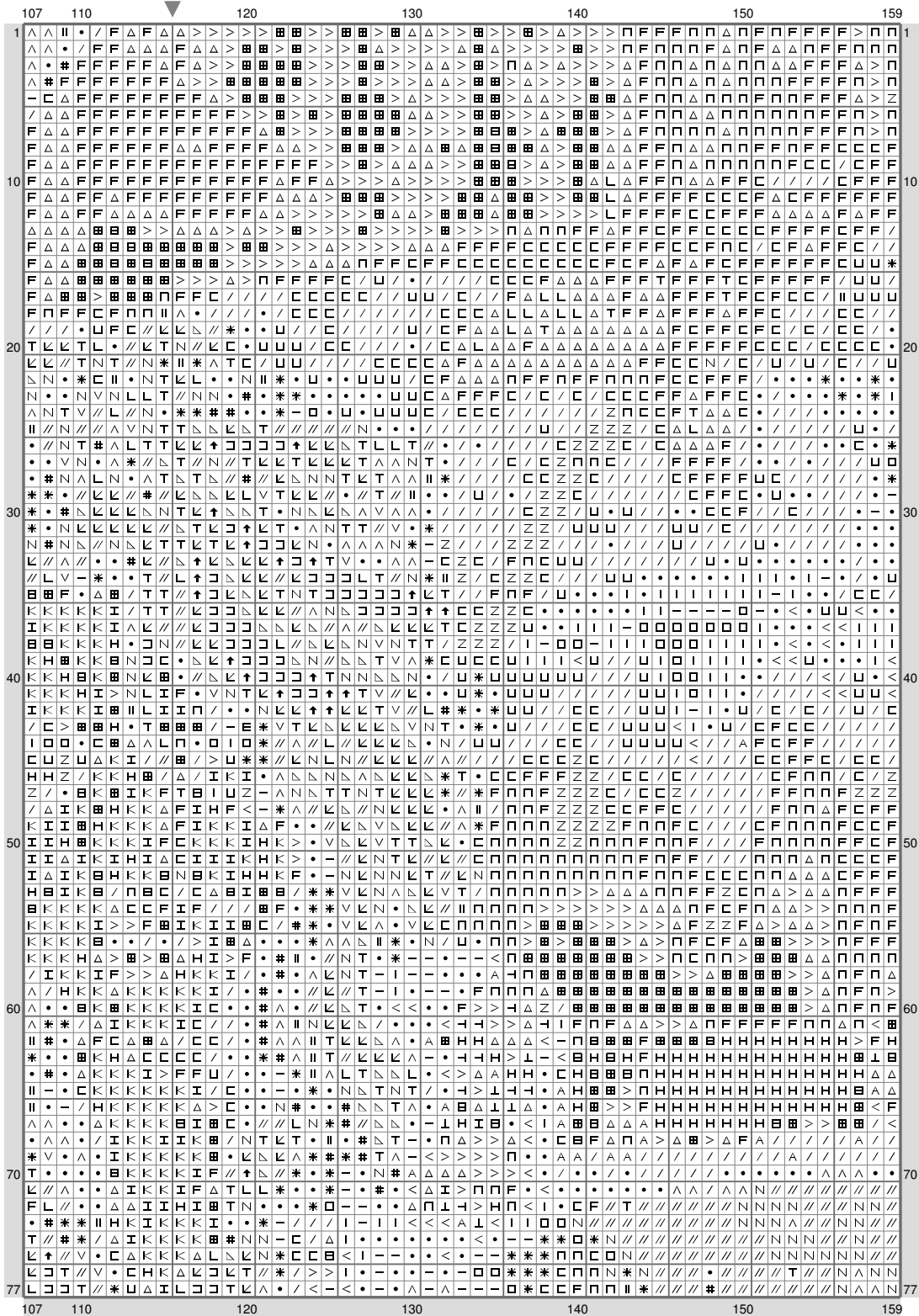
(This chart is printed using KG-Chart LE for Cross Stitch.)

# Twisted Aurora

	54	60	70	80	90	100	106
1	1	1	1	1	1	1	1
10	10	10	10	10	10	10	10
20	20	20	20	20	20	20	20
30	30	30	30	30	30	30	30
40	40	40	40	40	40	40	40
50	50	50	50	50	50	50	50
60	60	60	60	60	60	60	60
70	70	70	70	70	70	70	70
77	77	77	77	77	77	77	77

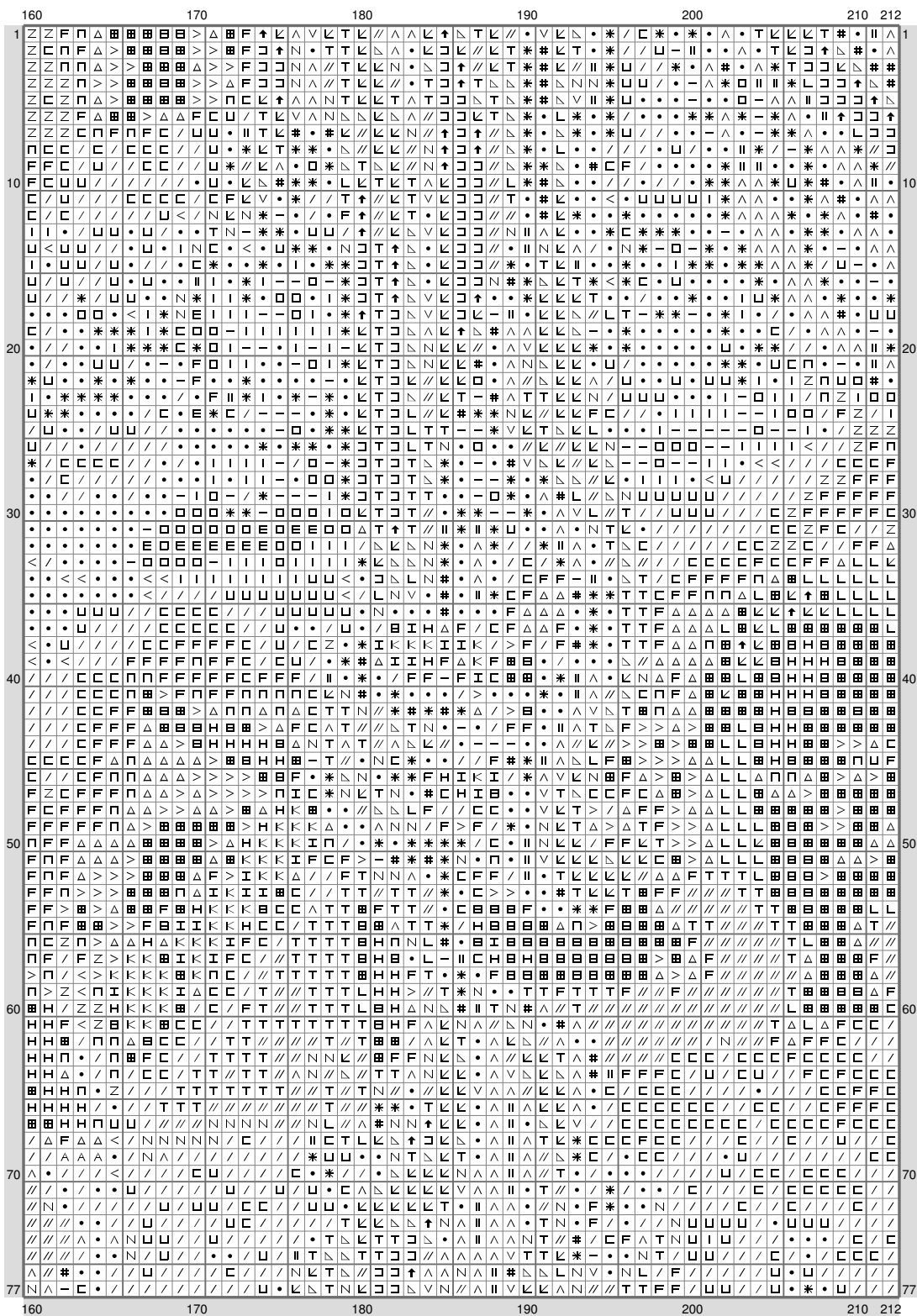
(This chart is printed using KG-Chart LE for Cross Stitch.)

# Twisted Aurora



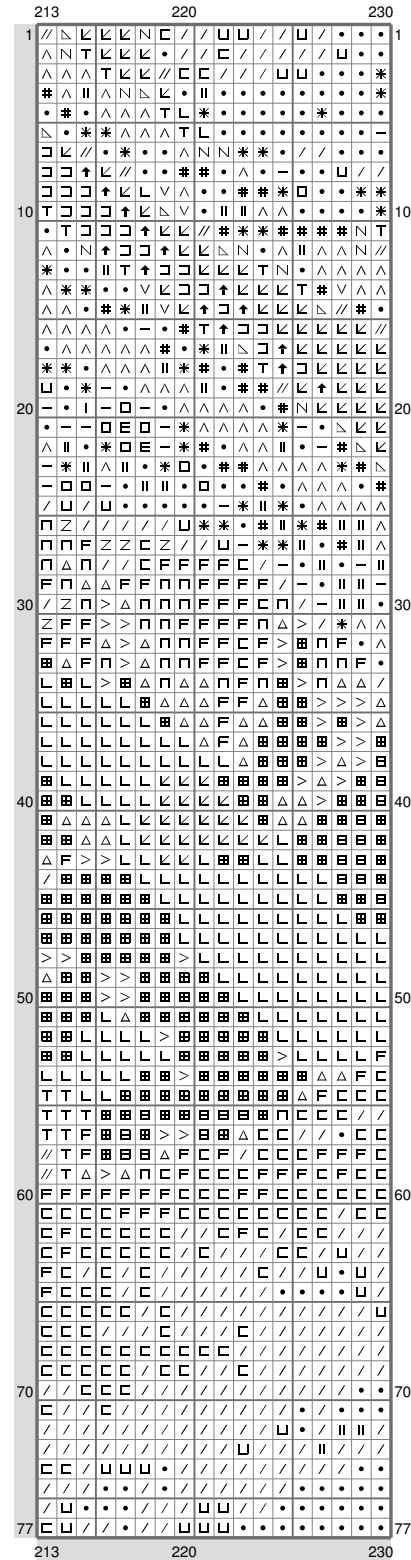
(This chart is printed using KG-Chart LE for Cross Stitch.)

## Twisted Aurora

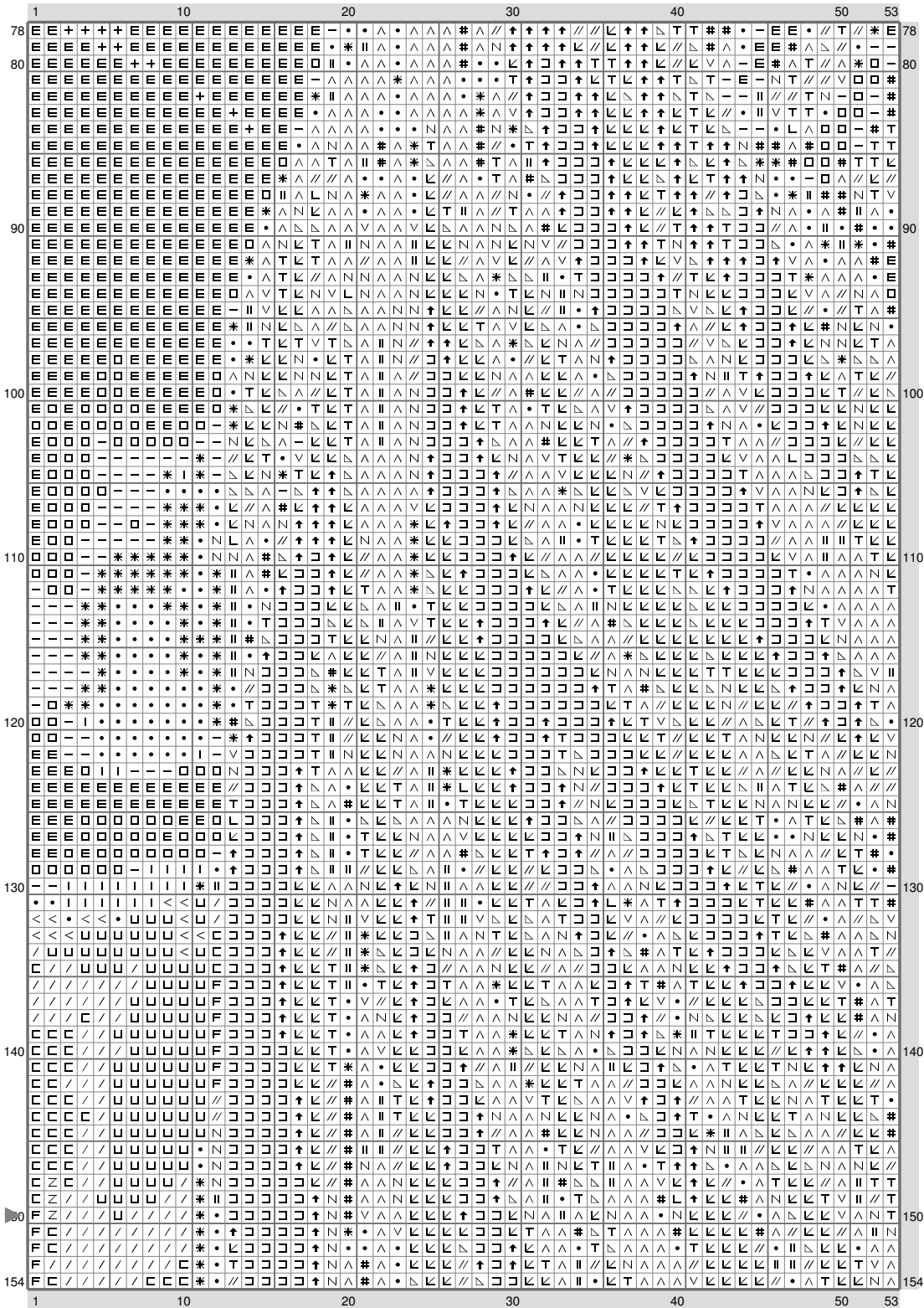


(This chart is printed using KG-Chart LE for Cross Stitch.)

# Twisted Aurora

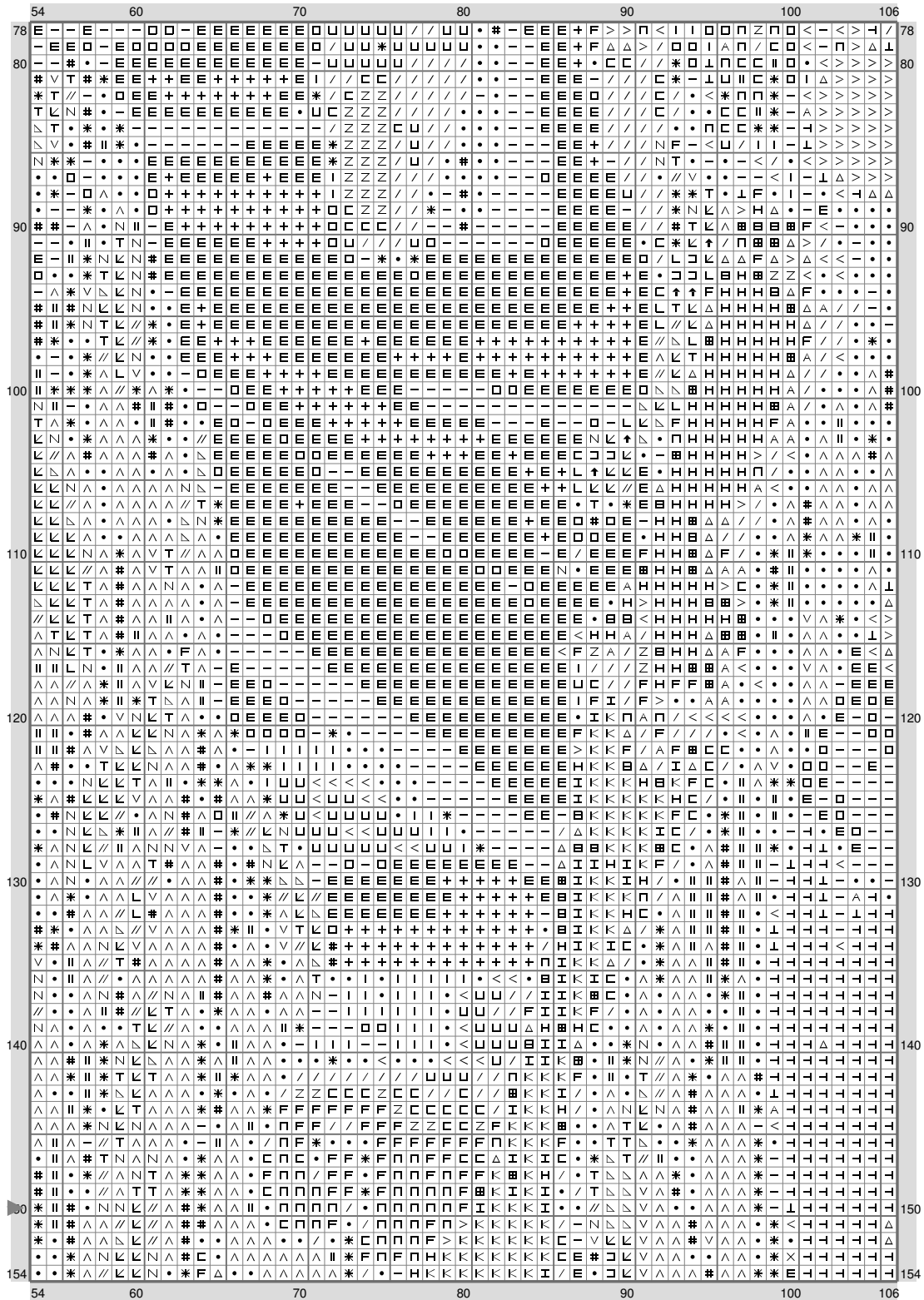


## Twisted Aurora



(This chart is printed using KG-Chart LE for Cross Stitch.)

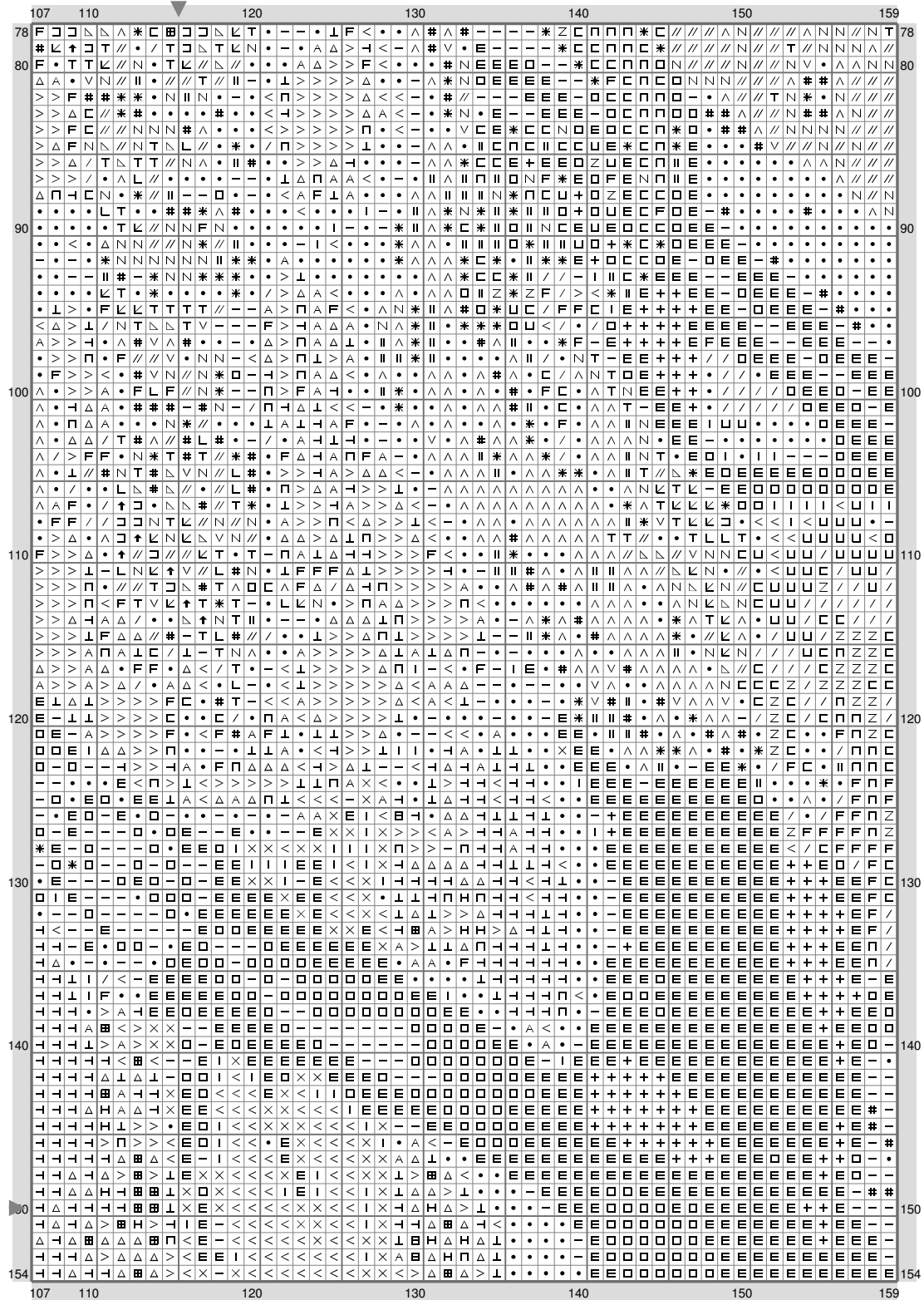
## Twisted Aurora



(This chart is printed using KG-Chart LE for Cross Stitch.)

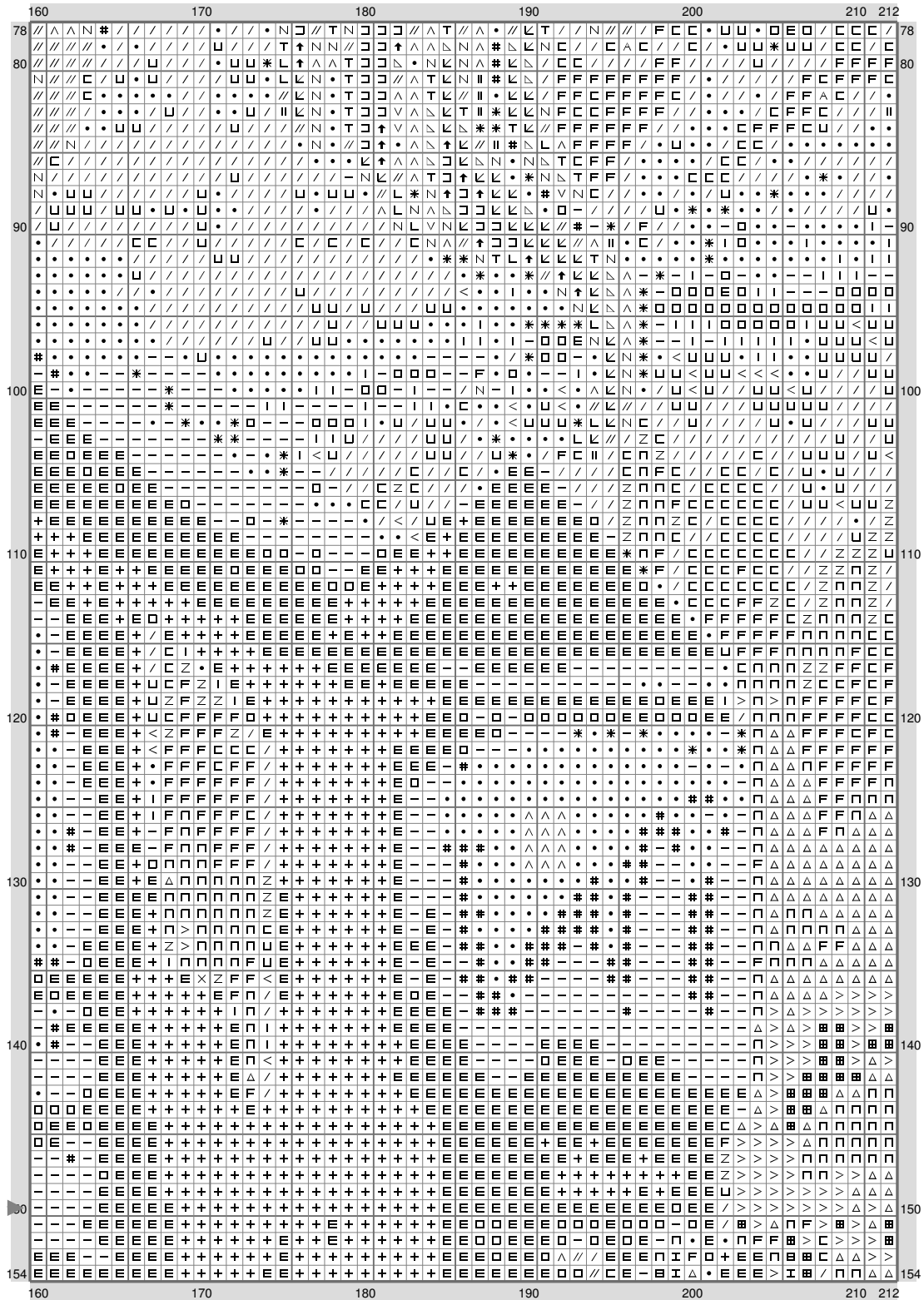


## Twisted Aurora



(This chart is printed using KG-Chart LE for Cross Stitch.)

## Twisted Aurora



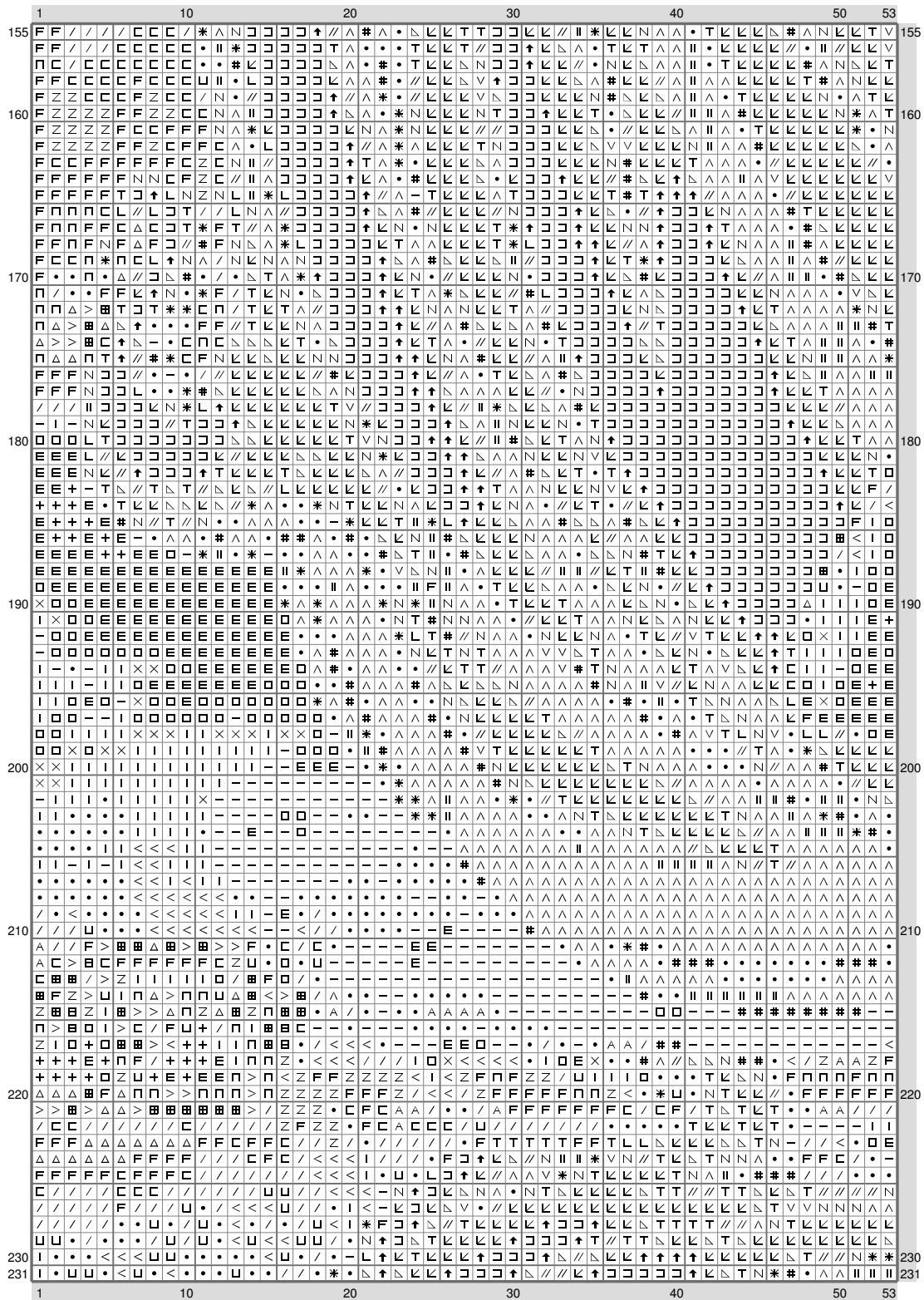
(This chart is printed using KG-Chart LE for Cross Stitch.)

# Twisted Aurora

	213										220										230										
78	/	/	/	/	/	/	/	.	.	.	.	.	.	.	.	.	.	.	.	.	78										
	F	F	F	F	F	F	F	/	.	.	.	.	.	.	.	.	.	.	.	.											
80	F	F	F	F	F	F	F	F	F	F	/	.	.	.	.	.	.	.	*		80										
	/	F	F	F	F	F	F	F	F	F	/	.	.	.	.	.	.	.	.	.											
	/	F	F	F	F	F	F	F	F	F	U	.	.	.	.	.	.	.	.	.											
	/	F	F	F	F	F	F	F	F	F	Z	.	.	.	.	.	.	*	*												
	/	F	F	F	F	F	F	F	F	F	Z	Z	Z	*	*	*	*	.	.	.											
	/	F	F	F	F	F	F	F	F	F	Z	Z	Z	Z	/	/	/	/	/	/											
	C	F	F	F	Z	Z	n	Z	Z	Z	U	U	.	.	.	.	*	.	.	.											
	/	/	Z	Z	Z	Z	n	Z	Z	Z	I	I	I	.	*	.	.	.	.	.											
	/	U	/	U	U	Z	Z	n	n	Z	I	I	I	I	I	I	I	I	I	I											
	.	.	.	U	Z	n	n	n	Z	n	Z	I	I	I	I	I	I	I	I	I											
90	.	.	.	.	Z	Z	Z	n	n	Z	n	Z	I	I	I	I	I	I	I	I	90										
	I	.	I	I	Z	n	Z	Z	Z	Z	Z	Z	I	I	I	I	I	I	I	I											
	-	-	-	I	Z	Z	Z	Z	Z	Z	U	U	U	U	<	<	<	<	<	<											
	O	O	O	I	U	U	Z	U	U	U	U	U	U	U	U	U	U	U	U	U											
	O	O	I	I	I	I	U	U	U	U	U	U	U	U	U	U	U	U	U	U											
	.	<	<	U	U	I	U	U	U	U	U	U	U	U	U	U	U	U	U	I											
	U	<	U	U	U	<	U	U	U	U	U	U	U	U	U	U	U	U	U	U											
	U	U	U	U	<	U	U	U	U	U	Z	U	U	U	U	U	U	U	U	U											
	/	U	U	U	I	U	U	U	U	Z	U	U	U	U	U	U	U	U	U	U											
	U	U	U	U	I	U	U	U	U	U	U	U	U	U	U	U	U	U	U	U											
100	U	U	U	U	.	<	U	U	U	U	U	<	U	U	U	U	U	U	U	U	100										
	U	U	U	U	.	<	U	U	U	U	U	<	U	U	U	U	U	U	U	U											
	U	/	U	U	I	.	<	U	U	U	U	U	U	U	U	U	U	U	U	U											
	U	/	U	<	.	.	I	U	U	U	U	U	U	U	U	U	U	U	U	<											
	U	Z	U	I	.	<	U	U	U	U	/	/	U	U	U	U	U	U	U	<											
	Z	Z	U	.	.	<	U	U	U	Z	U	U	U	U	U	U	U	U	U	<											
	Z	Z	/	U	U	U	Z	Z	Z	/	U	U	U	U	U	U	U	U	U	<											
	Z	Z	/	U	U	U	Z	Z	Z	U	U	U	U	U	U	U	U	U	U	.											
	Z	/	/	U	U	/	Z	Z	Z	U	U	U	U	U	U	U	U	U	U	.											
	Z	/	/	/	/	/	Z	Z	Z	U	U	/	/	U	U	U	U	U	U	<											
110	U	U	/	/	/	/	U	Z	Z	Z	U	U	U	U	U	U	U	U	U	<	110										
	U	<	U	U	/	U	Z	Z	U	U	U	U	U	U	U	U	U	U	U	.											
	U	/	U	<	U	U	U	U	U	Z	U	U	U	U	U	U	U	U	U	.											
	/	/	/	U	U	/	U	Z	U	U	U	U	U	U	U	U	U	U	U	<											
	C	/	/	/	/	U	/	U	Z	U	U	U	U	U	U	U	U	U	U	<											
	C	C	C	/	/	Z	Z	Z	/	/	U	U	U	U	U	U	U	U	U	<											
	F	F	F	C	C	C	Z	Z	Z	/	/	/	U	U	U	U	U	U	U	U											
	F	F	F	C	C	C	Z	n	Z	/	/	/	U	U	U	U	U	U	U	U											
	F	F	F	Z	F	C	n	Z	C	/	/	U	U	U	U	U	U	U	U	U											
	F	F	F	F	Z	F	n	Z	C	/	/	U	U	U	U	U	U	U	U	U											
120	F	F	F	F	F	F	n	Z	C	/	/	U	U	U	U	U	U	U	U	U	120										
	F	C	C	F	F	n	n	Z	C	/	U	U	U	U	U	U	U	U	U	U											
	F	n	F	F	C	F	n	n	Z	/	/	U	U	U	U	U	U	U	U	U											
	F	Δ	Δ	n	F	F	n	Z	C	/	U	U	U	U	U	U	U	U	U	U											
	n	Δ	Δ	Δ	F	n	n	F	C	/	/	U	U	U	U	U	U	U	U	U											
	n	Δ	Δ	Δ	Δ	n	n	F	C	Z	/	U	U	U	U	U	U	U	U	U											
	Δ	Δ	Δ	Δ	Δ	n	n	Z	F	F	F	F	/	/	U	U	U	U	U	U											
	Δ	Δ	Δ	Δ	F	n	n	F	F	C	C	/	/	U	U	U	U	U	U	U											
	Δ	Δ	Δ	Δ	F	n	n	F	F	C	C	/	/	U	U	U	U	U	U	U											
130	Δ	Δ	Δ	Δ	n	Z	n	F	F	C	/	/	Z	Z	Z	Z	Z	Z	Z	Z	130										
	Δ	Δ	Δ	Δ	n	Z	n	Z	F	F	C	/	/	Z	Z	Z	Z	Z	Z	Z											
	Δ	Δ	Δ	F	Z	Z	F	n	F	C	C	/	/	Z	Z	Z	Z	Z	Z	Z											
	Δ	Δ	Δ	F	Z	Z	F	F	F	C	C	Z	Z	Z	Z	Z	Z	Z	Z	Z											
	Δ	Δ	Δ	n	n	n	F	Δ	n	n	n	C	Z	Z	Z	Z	Z	Z	Z	Z											
	Δ	Δ	Δ	>	>	>	Δ	>	Δ	Δ	n	Z	Z	Z	Z	n	n	n	n	n											
	>	>	>	>	>	>	Δ	>	Δ	Δ	n	Z	Z	Z	Z	n	n	n	n	n											
	>	⊞	>	>	>	⊞	n	⊞	⊞	⊞	>	n	Z	Z	Z	n	n	n	n	n											
	⊞	⊞	>	>	>	⊞	>	⊞	⊞	⊞	>	n	Z	Z	Z	n	n	n	n	n											
140	⊞	⊞	>	>	>	⊞	>	⊞	⊞	⊞	>	n	n	Z	n	n	n	n	n	n	140										
	⊞	>	>	>	⊞	n	>	⊞	n	>	>	n	n	n	n	n	n	n	n	n											
	>	>	>	⊞	⊞	>	n	>	n	Z	n	>	Δ	n	F	Z	n	n	n	n											
	>	>	⊞	⊞	⊞	>	n	>	n	n	n	>	⊞	Δ	n	F	C	C	C												
	>	>	⊞	⊞	⊞	>	⊞	⊞	⊞	>	⊞	⊞	⊞	⊞	Δ	F	C	C	C												
	>	⊞	⊞	⊞	⊞	>	⊞	⊞	⊞	>	⊞	⊞	⊞	⊞	⊞	Δ	F	C	C												
	>	⊞	⊞	⊞	⊞	>	⊞	⊞	⊞	>	⊞	⊞	⊞	⊞	⊞	n	F	C	C												
	⊞	⊞	⊞	⊞	>	⊞	⊞	⊞	⊞	>	⊞	⊞	⊞	⊞	n	F	C	C	C												
150	⊞	⊞	⊞	⊞	⊞	⊞	⊞	⊞	⊞	⊞	⊞	>	F	C	C	C	C	C	C	150											
	⊞	⊞	⊞	⊞	⊞	⊞	⊞	⊞	⊞	⊞	⊞	>	Δ	F	Z	C	C	C	C												
	⊞	⊞	⊞	⊞	⊞	⊞	⊞	⊞	⊞	⊞	⊞	>	n	F	C	C	C	C	C												
	⊞	⊞	⊞	⊞	⊞	⊞	⊞	⊞	⊞	⊞	⊞	>	Δ	n	F	C	C	C	C												
154	>	⊞	⊞	⊞	⊞	⊞	⊞	⊞	⊞	⊞	⊞	Δ	n	F	F	C	C	C	C	154											
	213										220										230										

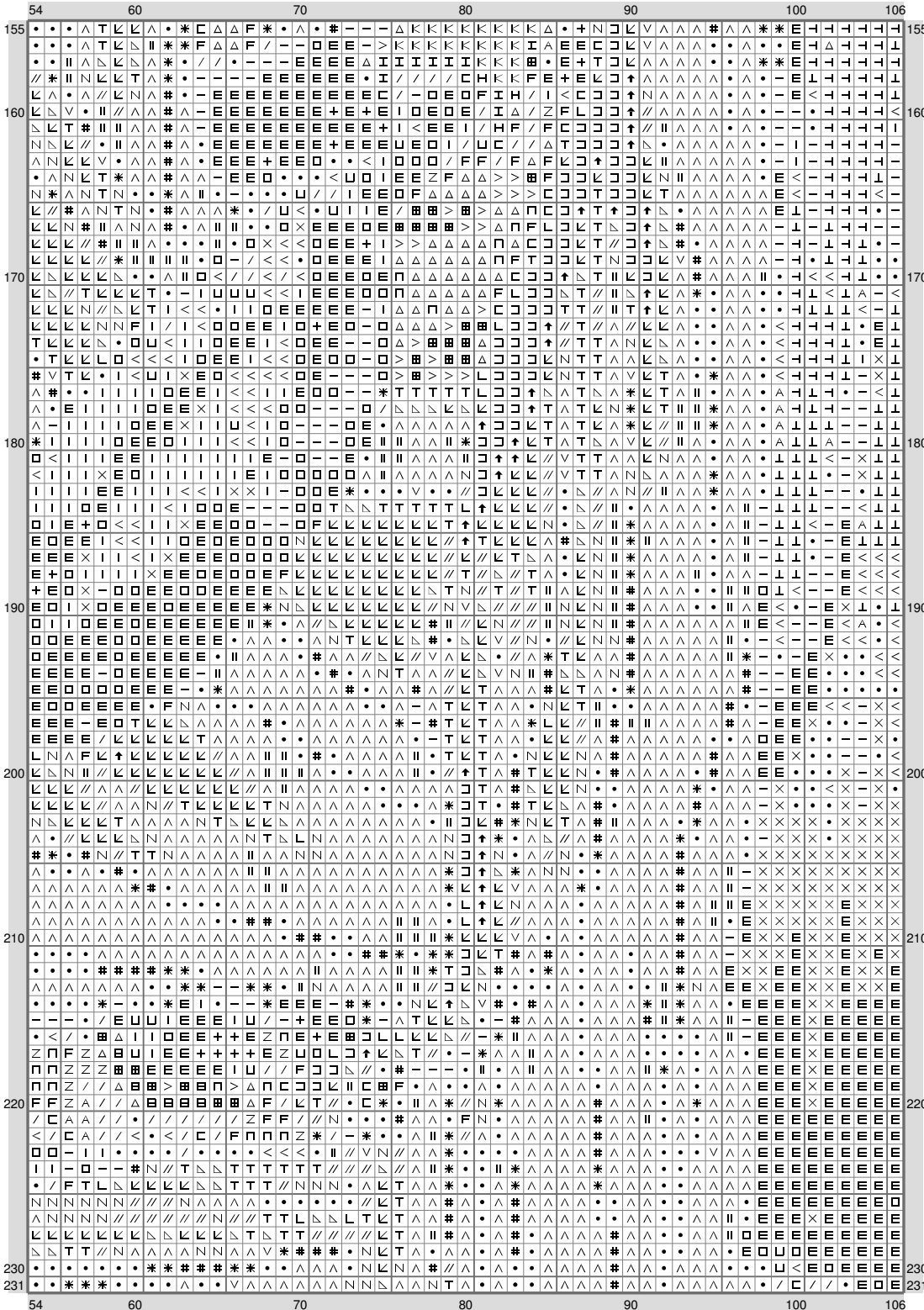
(This chart is printed using KG-Chart LE for Cross Stitch.)

## Twisted Aurora



(This chart is printed using KG-Chart LE for Cross Stitch.)

## Twisted Aurora



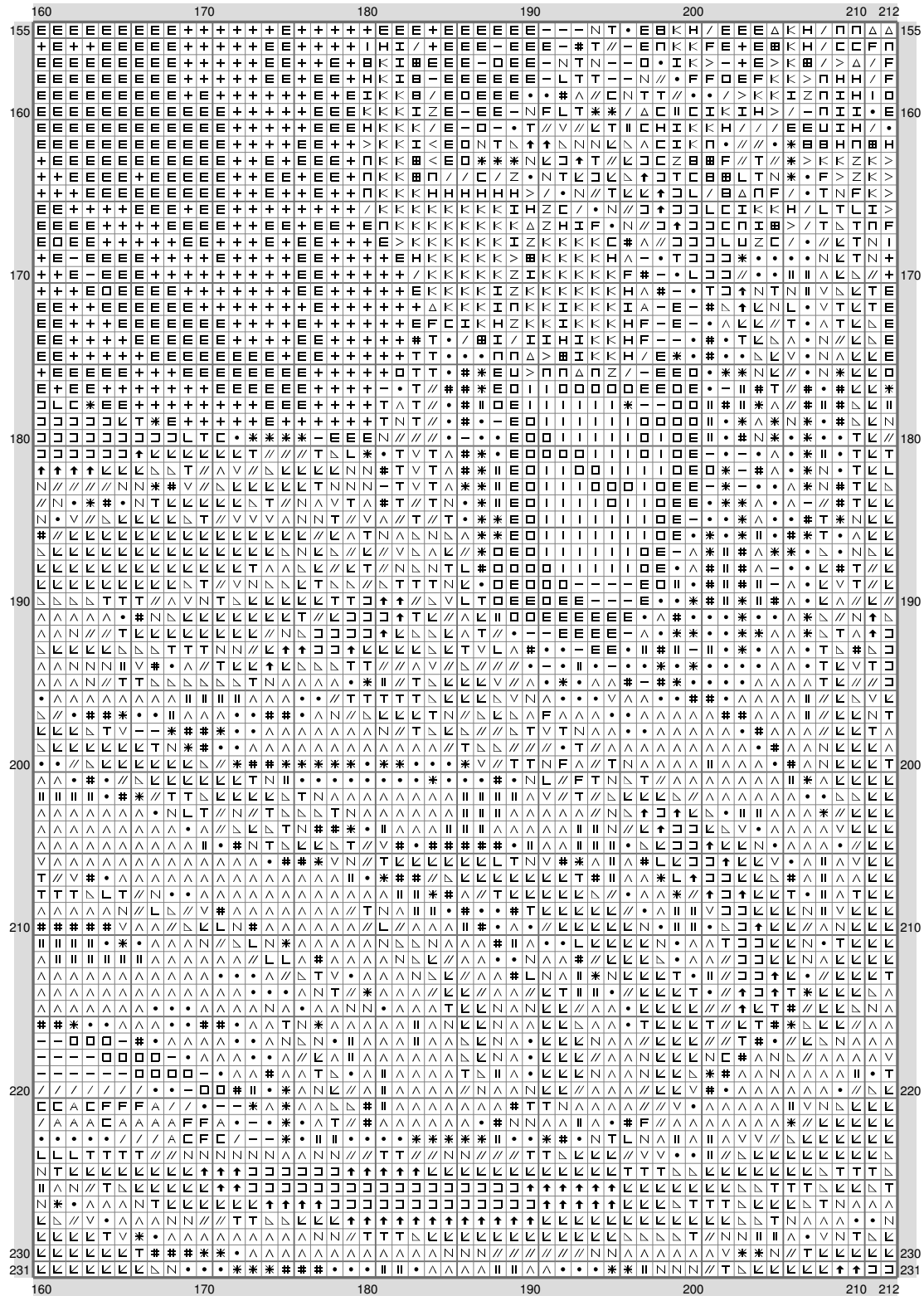
(This chart is printed using KG-Chart LE for Cross Stitch.)

# Twisted Aurora

	107	110		120	130	140	150	159	
155	+	+	+	+	+	+	+	+	155
160	+	+	+	+	+	+	+	+	160
170	+	+	+	+	+	+	+	+	170
180	+	+	+	+	+	+	+	+	180
190	+	+	+	+	+	+	+	+	190
200	+	+	+	+	+	+	+	+	200
210	+	+	+	+	+	+	+	+	210
220	+	+	+	+	+	+	+	+	220
230	+	+	+	+	+	+	+	+	230
231	+	+	+	+	+	+	+	+	231

(This chart is printed using KG-Chart LE for Cross Stitch.)

## Twisted Aurora



(This chart is printed using KG-Chart LE for Cross Stitch.)

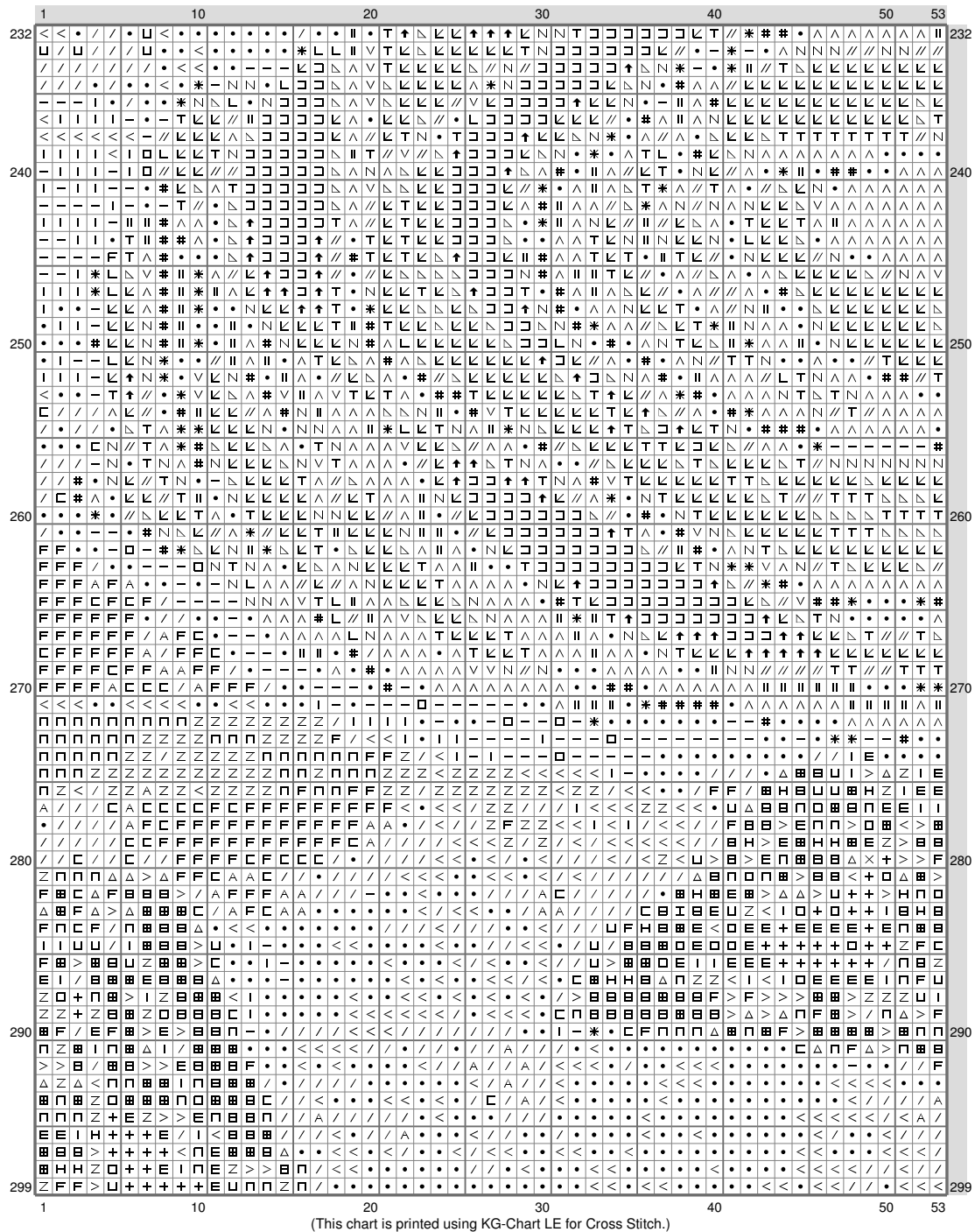
## Twisted Aurora

[illegible]

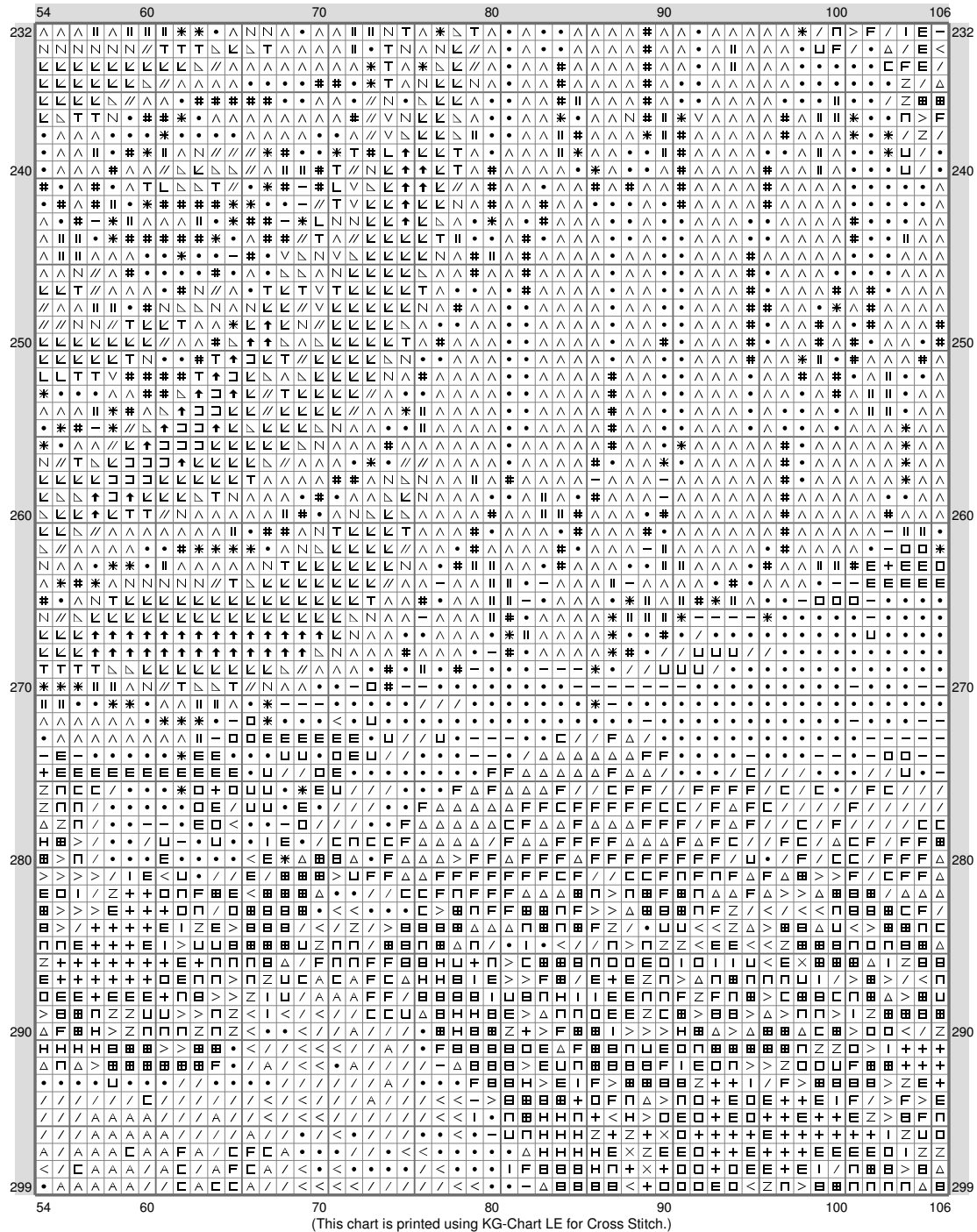
(This chart is printed using KG-Chart LE for Cross Stitch.)



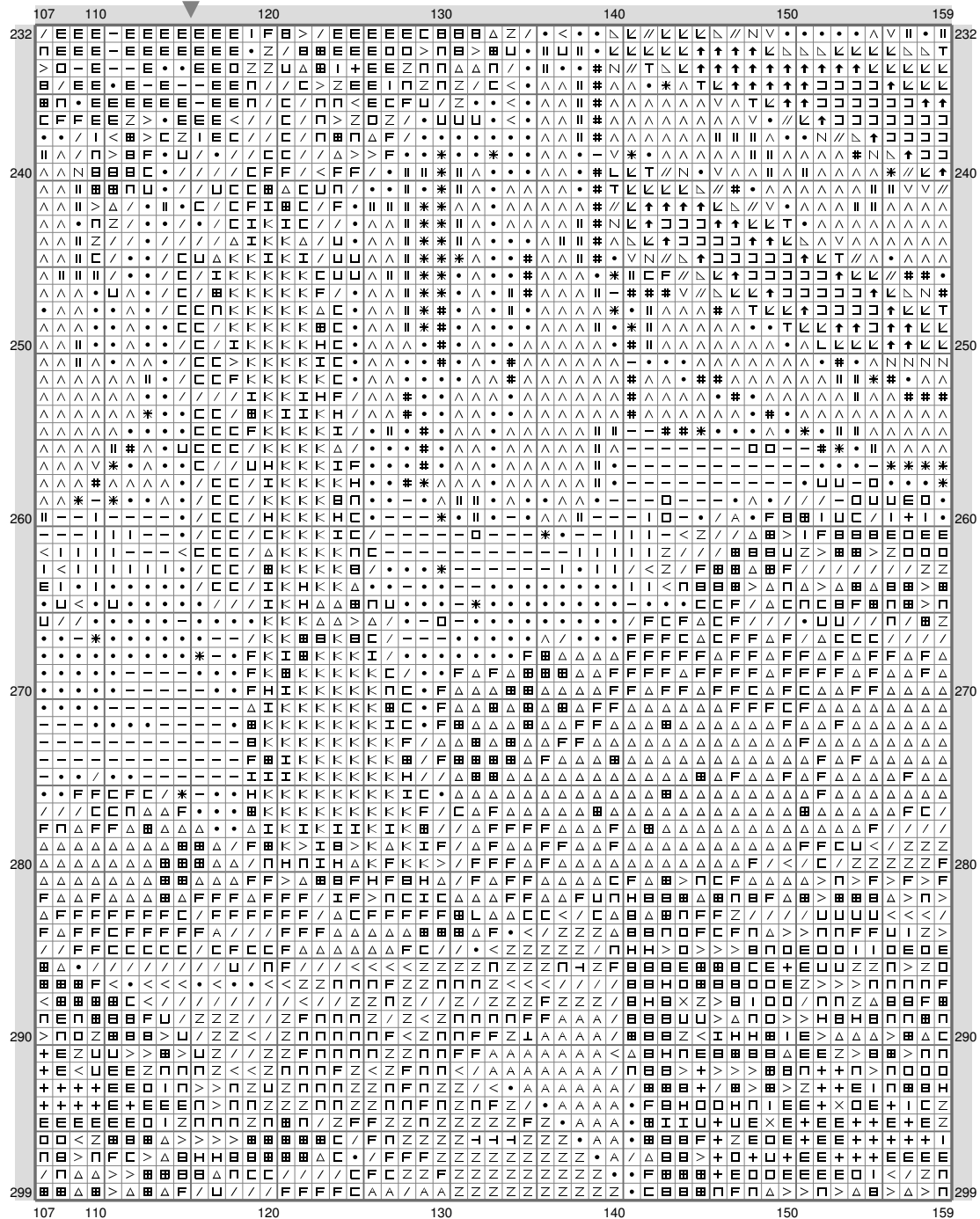
## Twisted Aurora



## Twisted Aurora

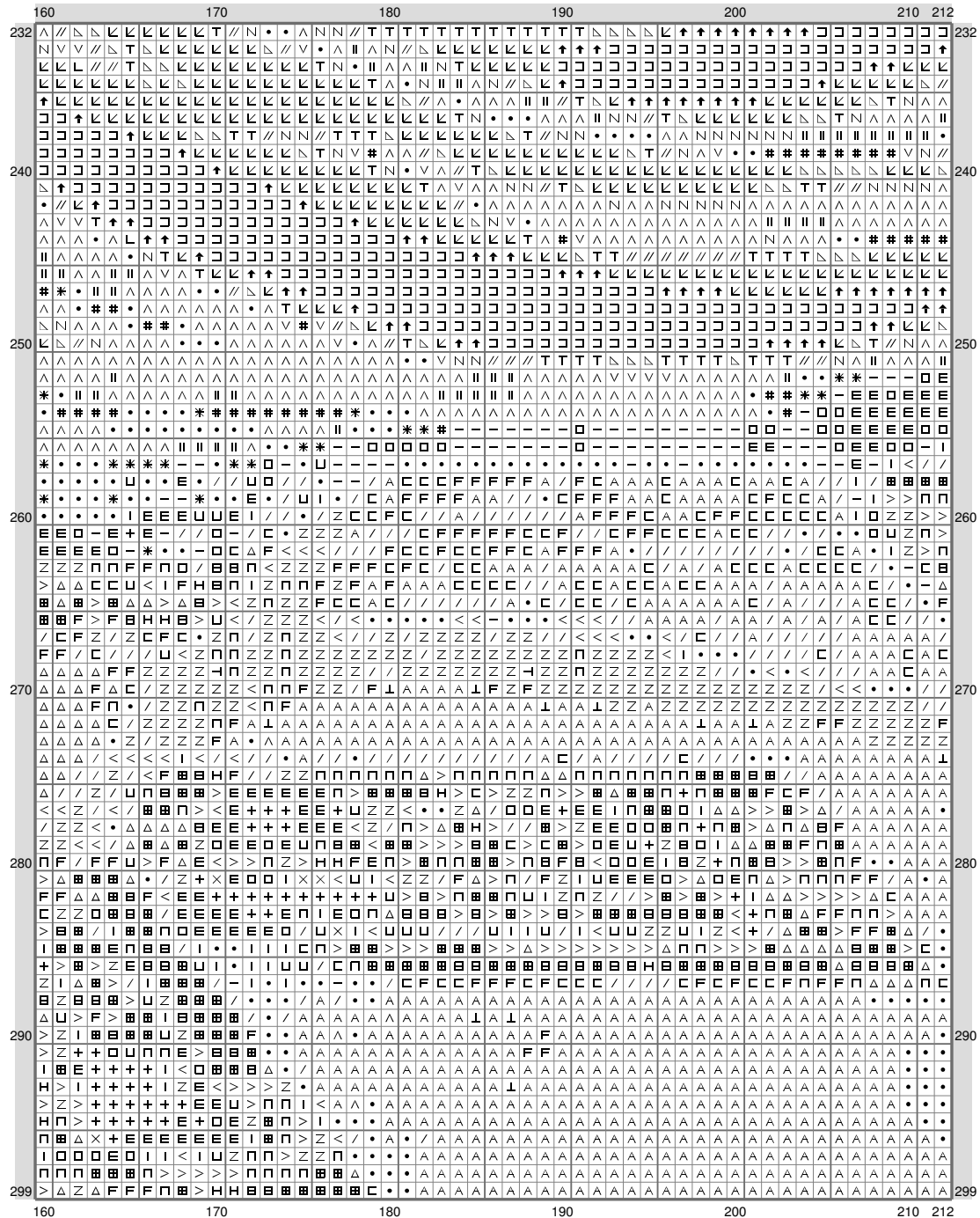


## Twisted Aurora



(This chart is printed using KG-Chart LE for Cross Stitch.)

# Twisted Aurora



(This chart is printed using KG-Chart LE for Cross Stitch.)

## Twisted Aurora








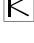









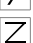






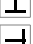












[illegible]

(This chart is printed using KG-Chart LE for Cross Stitch.)

## Twisted Aurora

Stitch Count: 230w x 299h  
 Finished Size: 41.72 cm x 54.24 cm (14 ct./inch)  
 Cloth: Aida  
 Cloth's Color: White  
 # of colors: 37 Colors

Color Table (DMC)

Cross Stitch				
	310	(1932 ct)		642 (592 ct)
	939	(5443 ct)		647 (439 ct)
	934	(1497 ct)		613 (321 ct)
	3371	(2985 ct)		543 (774 ct)
	823	(530 ct)		
	936	(1774 ct)		
	3021	(1085 ct)		
	938	(1451 ct)		
	3031	(6929 ct)		
	898	(454 ct)		
	433	(6477 ct)		
	937	(1435 ct)		
	844	(1332 ct)		
	3362	(1371 ct)		
	3781	(3548 ct)		
	645	(1105 ct)		
	3011	(1665 ct)		
	830	(1713 ct)		
	839	(1178 ct)		
	3051	(1771 ct)		
	3790	(2193 ct)		
	831	(1801 ct)		
	3740	(434 ct)		
	3041	(665 ct)		
	640	(1408 ct)		
	611	(1738 ct)		
	646	(1301 ct)		
	371	(1433 ct)		
	370	(497 ct)		
	729	(4435 ct)		
	3045	(1117 ct)		
	834	(2426 ct)		
	3032	(1521 ct)		